

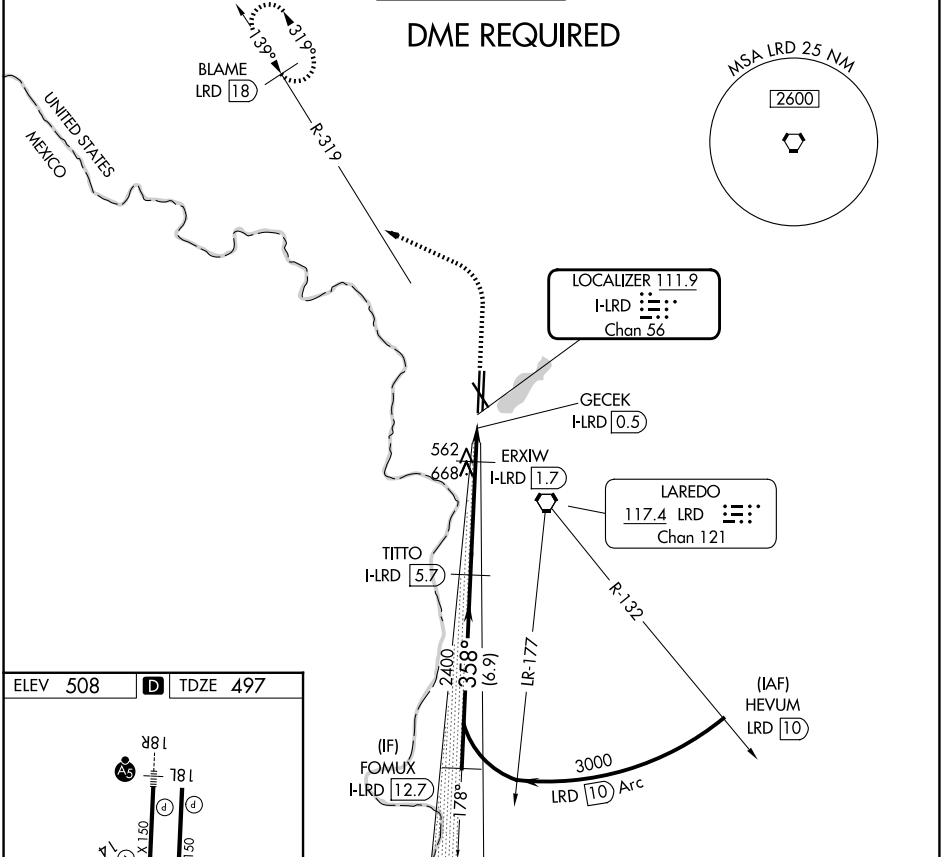
LOC/DME I-LRD 111.9 Chan 56	APP CRS 358°	Rwy Ldg TDZE Apt Elev	8623 497 508
------------------------------------------	------------------------	-----------------------------	-----------------------------------------

LOC BC RWY 36L

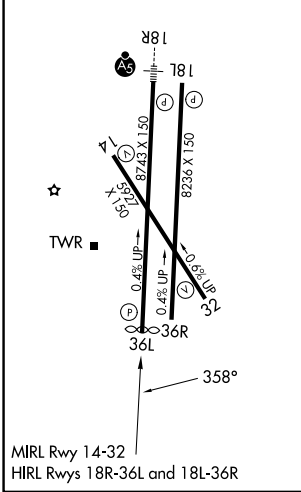
LAREDO INTL (L.R.D)

⚠ Circling NA west of Rwy 14 and 36L. **⚠** DME required. MISSED APPROACH: Climb to 1100 then climbing left turn to 2600 on heading 290° and on LRD VORTAC R-319 to BLAME/LRD 18 DME and hold.

ATIS 125.775	HOUSTON CENTER 127.8 307.2	LAREDO TOWER ★ 120.1(CTAF) 0 257.9	GND CON 121.8	UNICOM 122.95
------------------------	--------------------------------------	----------------------------------------------	-------------------------	-------------------------



ELEV 508	D	TDZE 497
----------	----------	----------



MIRL Rwy 14-32
HIRL Rwy 18R-36L and 18L-36R

FOMUX I-LRD 12.7	Use I-LRD DME when on the localizer course.	1100	2600	LRD R-319	BLAME LRD 18
3000	358°	TITTO I-LRD 5.7	3.00° TCH 50	ERXIW I-LRD 1.7	GECEK I-LRD 0.5
Disregard glide slope indications.		2400	1100		
← 6.9 NM		← 4.1 NM		← 1.2 NM	
← 0.6					
CATEGORY	A	B	C	D	E
S-LOC 36L	820-1 323 (400-1)				
CIRCLING	940-1 432 (500-1)	980-1 472 (500-1)	1100-1½ 592 (600-1½)	1200-2¼ 692 (700-2¼)	1200-2½ 692 (700-2½)

LAREDO, TEXAS
Amdt 3 01FEB18

27°33'N-99°28'W

LAREDO INTL (L.R.D)

LOC BC RWY 36L

SC-3, 19 MAR 2026 to 16 APR 2026

SC-3, 19 MAR 2026 to 16 APR 2026