

WAAS CH <b>65841</b> <b>W14A</b>	APP CRS <b>142°</b>	Rwy Ldg TDZE Apt Elev	<b>5927</b> <b>508</b> <b>508</b>
--	------------------------	-----------------------------	---

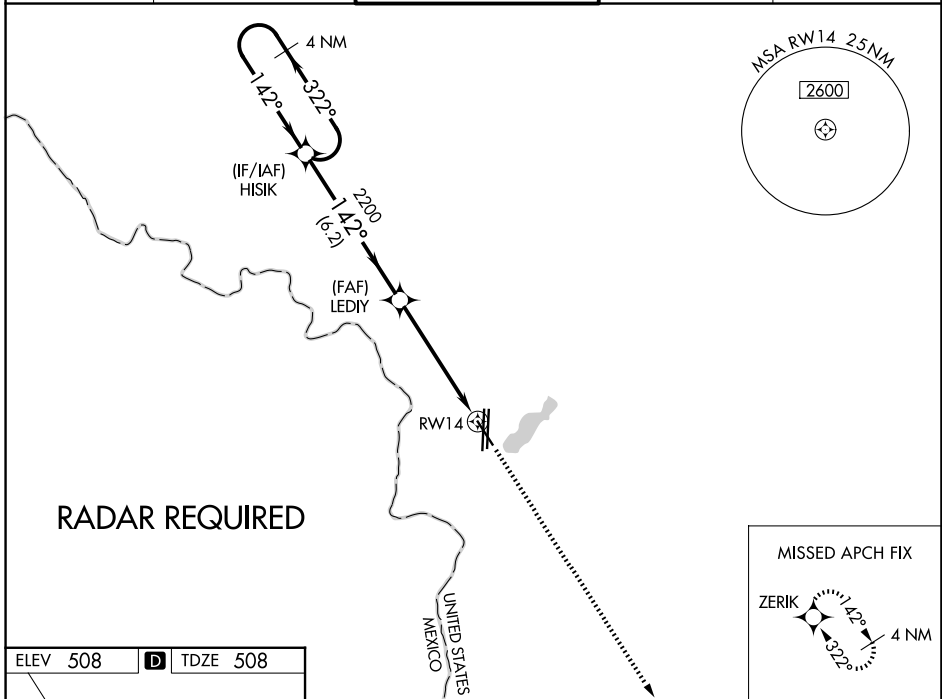
# RNAV (GPS) RWY 14

LAREDO INTL (L.R.D)

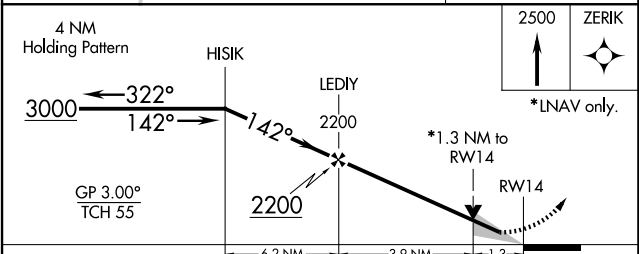
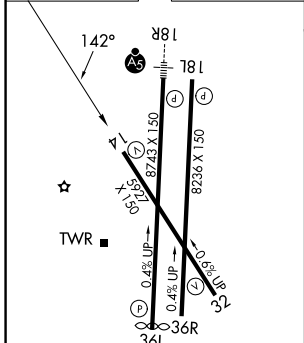
**⚠** For uncompensated Baro-VNAV systems, LNAV/VNAV NA below 1°C (34°F) or above 54°C (130°F). Circling NA west of Rwy 14 and 36L.  
**⚠** DME/DME RNP-0.3 NA.

MISSED APPROACH: Climb to 2500 direct ZERIK and hold.

ATIS <b>125.775</b>	HOUSTON CENTER <b>127.8 307.2</b>	LAREDO TOWER * <b>120.1(CTAF) 257.9</b>	GND CON <b>121.8</b>	UNICOM <b>122.95</b>
------------------------	--------------------------------------	--	-------------------------	-------------------------



ELEV 508	<b>D</b>	TDZE 508
----------	----------	----------



CATEGORY	A	B	C	D	E
LPV DA	758- <sup>3</sup> / <sub>4</sub> 250 (300- <sup>3</sup> / <sub>4</sub> )				
LNAV/VNAV DA	810- <sup>7</sup> / <sub>8</sub> 302 (400- <sup>7</sup> / <sub>8</sub> )				
LNAV MDA	960-1	452 (500-1)	960-1 <sup>3</sup> / <sub>8</sub> 452 (500-1 <sup>3</sup> / <sub>8</sub> )		
CIRCLING	960-1 452 (500-1)	980-1 472 (500-1)	1100-1 <sup>1</sup> / <sub>2</sub> 592 (600-1 <sup>1</sup> / <sub>2</sub> )	1200-2 <sup>1</sup> / <sub>4</sub> 692 (700-2 <sup>1</sup> / <sub>4</sub> )	1200-2 <sup>1</sup> / <sub>2</sub> 692 (700-2 <sup>1</sup> / <sub>2</sub> )

MIRL Rwy 14-32  
 HIRL Rwy 18R-36L and 18L-36R