

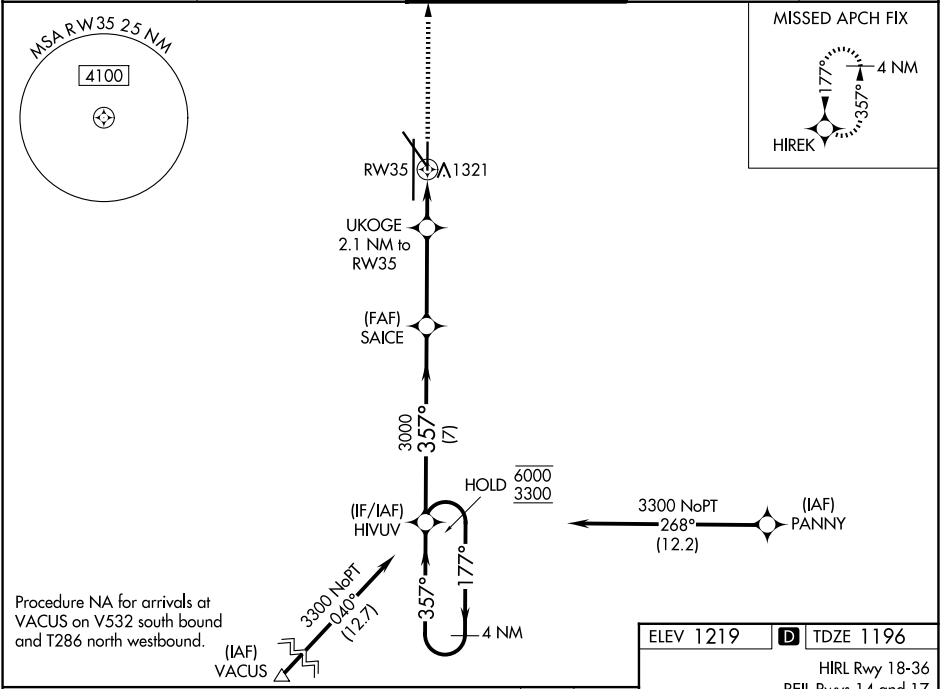
WAAS CH <b>45637</b> <b>W35A</b>	APP CRS <b>357°</b>	Rwy Ldg TDZE <b>1196</b> Apt Elev <b>1219</b>
--	------------------------	---

# RNAV (GPS) RWY 35

LINCOLN (LNK)

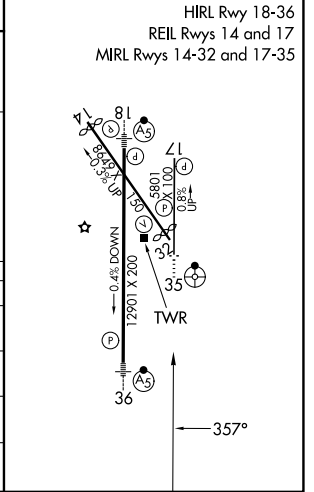
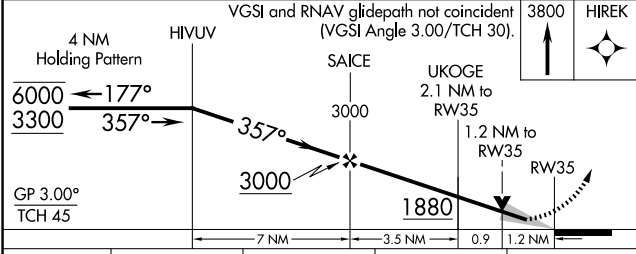
RNP APCH - GPS.		ODALS 	MISSED APPROACH: Climb to 3800 direct HIREK and hold.	
 For uncompensated Baro-VNAV systems, LNAV/VNAV NA below -25°C or above 54°C.				

ATIS <b>118.05 290.9</b>	OMAHA APP CON <b>124.0 270.3</b>	LINCOLN TOWER* <b>118.5 (CTAF) 253.5</b>	GND CON <b>121.9 275.8</b>	UNICOM <b>122.95</b>
-----------------------------	-------------------------------------	---	-------------------------------	-------------------------



Procedure NA for arrivals at VACUS on V532 south bound and T286 north westbound.

ELEV 1219	<b>D</b> TDZE 1196
-----------	--------------------



CATEGORY	A	B	C	D
LPV DA	1446-3/4		250 (300-3/4)	
LNAV/VNAV DA	1534-1		338 (400-1)	
LNAV MDA	1580-3/4	384 (400-3/4)	1580-1	384 (400-1)
CIRCLING	1680-1 461 (500-1)	1760-1 541 (600-1)	1820-1 3/4 601 (700-1 3/4)	1960-2 1/2 741 (800-2 1/2)

NC-2, 19 MAR 2026 to 16 APR 2026

NC-2, 19 MAR 2026 to 16 APR 2026