

LOC I-DLT 111.9	APP CRS 264°	Rwy Ldg TDZE Apt Elev	8003 3256 3282
---------------------------	------------------------	-----------------------------	-------------------------------------------

ILS or LOC RWY 26

LUBBOCK PRESTON SMITH INTL (L.B.B)

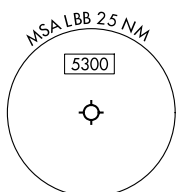
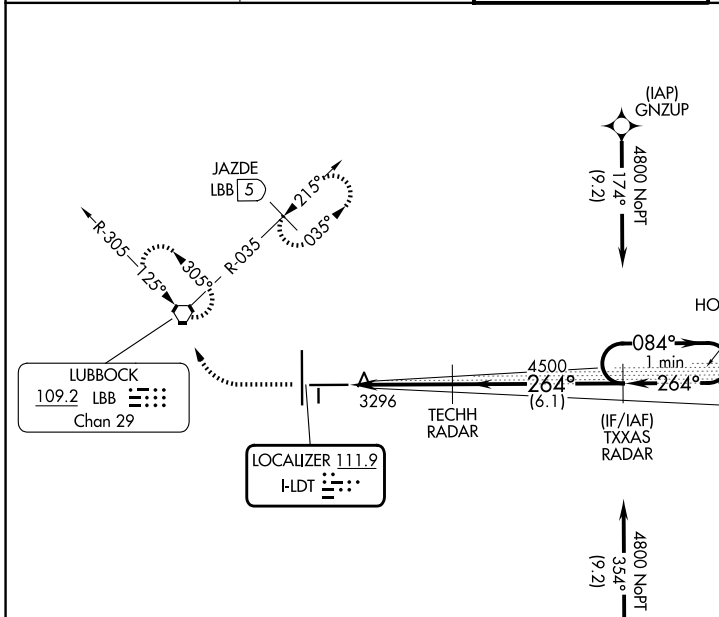
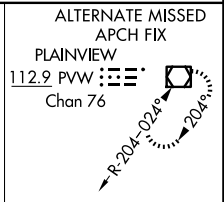
RNP APCH - GPS. From WREKM or GNZUP.
RADAR required.

⚠ For inop ALS, increase visibility S-ILS-26 Cat E visibility to RVR 4000, and S-LOC-26 Cat E visibility to 1/4 SM.

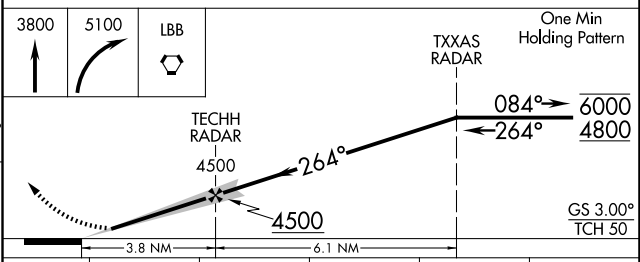
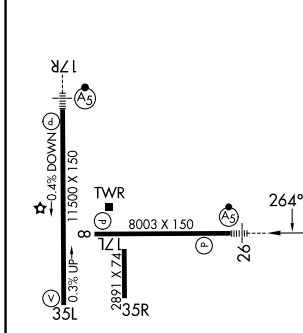


MISSED APPROACH: Climb to 3800 then climbing right turn to 5100 direct LBB VORTAC and hold, continue climb-in-hold to 5100. (TACAN aircraft climb to 3800 then climbing right turn to 5300 on heading 310° and on LBB VORTAC R-035 to JAZDE/LBB 5 DME and hold northeast, left turn, 215° inbound, continue climb-in-hold to 5300).

ATIS 125.3 270.275	LUBBOCK APP CON 119.2 351.8	LUBBOCK TOWER 120.5 239.3	GND CON 121.9 348.6
------------------------------	---------------------------------------	-------------------------------------	-------------------------------



ELEV 3282	D	TDZE 3256
-----------	----------	-----------



REIL Rwy 8					
HIRL Rwys 8-26 and 17R-35L					
FAF to MAP 3.8 NM					
Knots	60	90	120	150	180
Min:Sec	3:48	2:32	1:54	1:31	1:16
CATEGORY	A	B	C	D	E
S-ILS 26	3456/24 200 (200-1/2)				
S-LOC 26	3560/24	304 (300-1/2)	3560/40		304 (300-3/4)
CIRCLING	3720-1 438 (500-1)	3740-1 458 (500-1)	3880-1 1/2 598 (600-1 1/2)	3940-2 658 (700-2)	4100-3 818 (900-3)

SC-2, 19 MAR 2026 to 16 APR 2026

SC-2, 19 MAR 2026 to 16 APR 2026