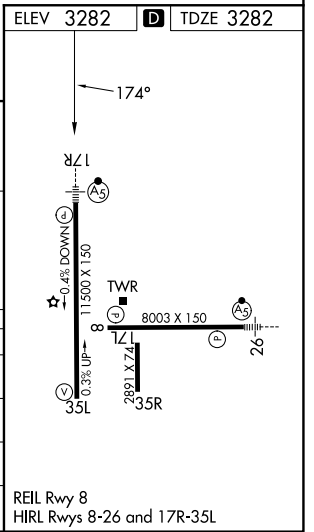
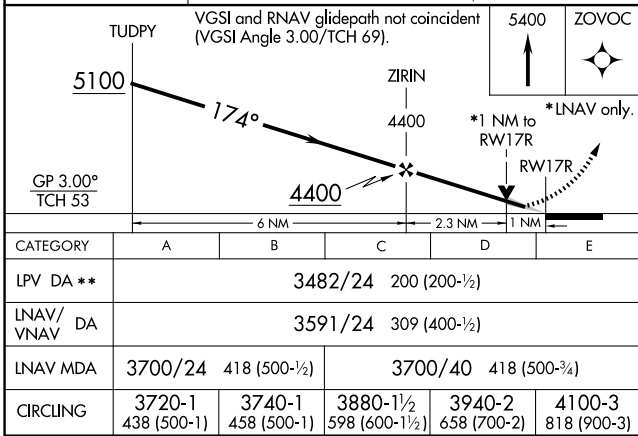
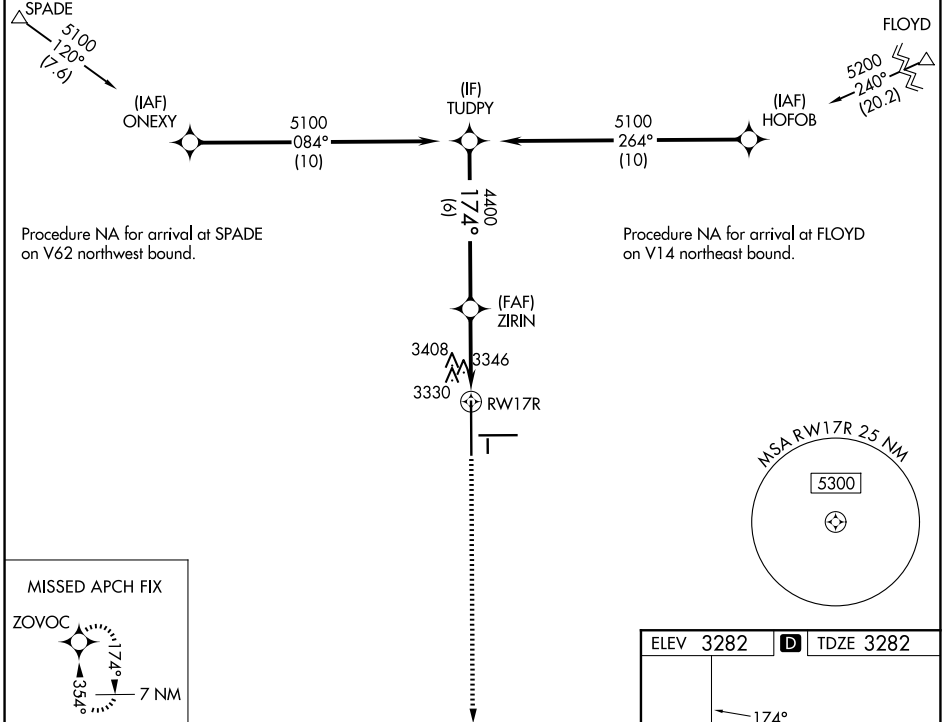


WAAS CH <b>40028</b> <b>W17A</b>	APP CRS <b>174°</b>	Rwy Ldg TDZE <b>3282</b> Apt Elev <b>3282</b>
--	------------------------	---

# RNAV (GPS) Y RWY 17R

LUBBOCK PRESTON SMITH INTL (LBB)

RNP APCH. ⚠ For uncompensated Baro-VNAV systems, LNAV/VNAV NA below -12°C or above 51°C. ⚠ For inop ALS increase LPV Cat E visibility to RVR 4000, LNAV/VNAV Cat E visibility to RVR 5000 and LNAV Cat A/B visibility to RVR 5500 and Cat C/D/E visibility to RVR 6000. ** RVR 1800 authorized with use of FD or AP or HUD to DA.		MALSR 	MISSED APPROACH: Climb to 5400 direct ZOVOC and hold.
ATIS <b>125.3 270.275</b>	LUBBOCK APP CON <b>119.2 351.8</b>	LUBBOCK TOWER <b>120.5 239.3</b>	GND CON <b>121.9 348.6</b>



SC-2, 19 MAR 2026 to 16 APR 2026

SC-2, 19 MAR 2026 to 16 APR 2026