

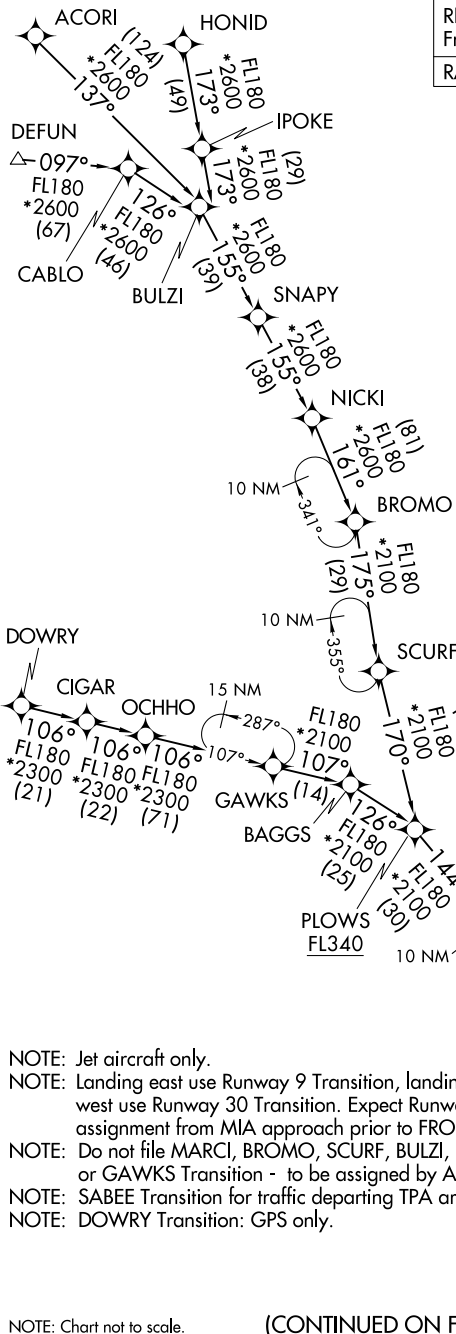
# FROGZ FIVE ARRIVAL (RNAV)

## Transition Routes

MIAMI, FLORIDA

RNAV 1 - DME/DME/IRU or GPS. From DOWRY: RNAV 1 - GPS. RADAR required.
--

MIAMI APP CON 120.5 350.225 KHST ATIS * 132.275 269.9 MIA D-ATIS 119.15 TMB ATIS 124.0
---



- ACORI TRANSITION (ACORI.FROGZ5)
- BROMO TRANSITION (BROMO.FROGZ5)
- BULZI TRANSITION (BULZI.FROGZ5)
- DEFUN TRANSITION (DEFUN.FROGZ5)
- DOWRY TRANSITION (DOWRY.FROGZ5)
- GAWKS TRANSITION (GAWKS.FROGZ5)
- HONID TRANSITION (HONID.FROGZ5)
- MARCI TRANSITION (MARCI.FROGZ5)
- SABEE TRANSITION (SABEE.FROGZ5)
- SCURF TRANSITION (SCURF.FROGZ5)

- NOTE: Jet aircraft only.
- NOTE: Landing east use Runway 9 Transition, landing west use Runway 30 Transition. Expect Runway assignment from MIA approach prior to FROGZ.
- NOTE: Do not file MARCI, BROMO, SCURF, BULZI, or GAWKS Transition - to be assigned by ATC.
- NOTE: SABEE Transition for traffic departing TPA area only.
- NOTE: DOWRY Transition: GPS only.

NOTE: Chart not to scale.

(CONTINUED ON FOLLOWING PAGE)

See following page for arrival route.

SE-3, 19 MAR 2026 to 16 APR 2026

SE-3, 19 MAR 2026 to 16 APR 2026

# FROGZ FIVE ARRIVAL (RNAV)

## Transition Routes

MIAMI, FLORIDA

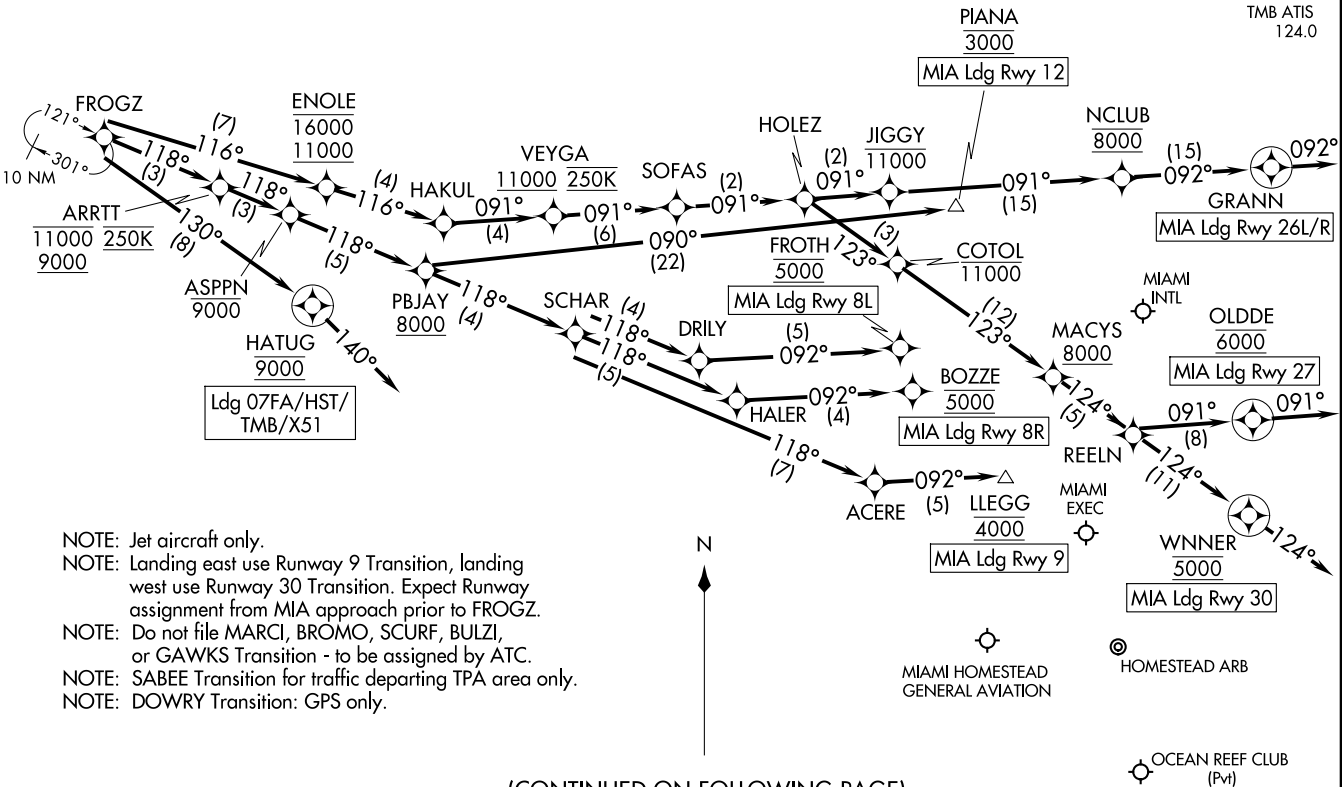
(FROGZ, FROGZ5) 19 MAR 26

FROGZ FIVE ARRIVAL (RNAV)

Arrival Routes

MIAMI, FLORIDA

RNAV 1 - DME/DME/IRU or GPS.  
From DOWRY: RNAV 1 - GPS.  
RADAR required.



MIAMI APP CON  
120.5 350.225  
KHST ATIS ★  
132.275 269.9  
MIA D-ATIS  
119.15  
TMB ATIS  
124.0

- NOTE: Jet aircraft only.
- NOTE: Landing east use Runway 9 Transition, landing west use Runway 30 Transition. Expect Runway assignment from MIA approach prior to FROGZ.
- NOTE: Do not file MARCI, BROMO, SCURF, BULZI, or GAWKS Transition - to be assigned by ATC.
- NOTE: SABEE Transition for traffic departing TPA area only.
- NOTE: DOWRY Transition: GPS only.

NOTE: Chart not to scale.

(CONTINUED ON FOLLOWING PAGE)

(FROGZ, FROGZ5) 26078

FROGZ FIVE ARRIVAL (RNAV)

Arrival Routes

MIAMI, FLORIDA

AL-257 (FAA)

MIAMI HOMESTEAD  
GENERAL AVIATION

HOMESTEAD ARB

OCEAN REEF CLUB  
(Pvt)

**FROGZ FIVE ARRIVAL (RNAV)**

MIAMI, FLORIDA

**ARRIVAL ROUTE DESCRIPTION**

LANDING MIA RUNWAY 8L: From FROGZ on track 118° to cross ARRTT between 9000 and 11000 and at 250K, then on track 118° to cross ASPPN at or below 9000, then on track 118° to cross PBJAY at or above 8000, then on track 118° to SCHAR, then on track 118° to DRILY, then on track 092° to cross FROTH at 5000. Expect RNAV Rwy 8L approach.

LANDING MIA RUNWAY 8R: From FROGZ on track 118° to cross ARRTT between 9000 and 11000 and at 250K, then on track 118° to cross ASPPN at or below 9000, then on track 118° to cross PBJAY at or above 8000, then on track 118° to SCHAR, then on track 118° to HALER, then on track 092° to cross BOZZE at 5000. Expect ILS or RNAV Rwy 8R approach.

LANDING MIA RUNWAY 9: From FROGZ on track 118° to cross ARRTT between 9000 and 11000 and at 250K, then on track 118° to cross ASPPN at or below 9000, then on track 118° to cross PBJAY at or above 8000, then on track 118° to SCHAR, then on track 118° to ACERE, then on track 092° to cross LLEGG at 4000. Expect ILS or RNAV Rwy 9 approach.

LANDING MIA RUNWAY 12: From FROGZ on track 118° to cross ARRTT between 9000 and 11000 and at 250K, then on track 118° to cross ASPPN at or below 9000, then on track 118° to cross PBJAY at or above 8000, then on track 090° to cross PIANA at 3000. Expect ILS or RNAV Rwy 12 approach.

LANDING MIA RUNWAYS 26L/R: From FROGZ on track 116° to cross ENOLE between 11000 and 16000, then on track 116° to HAKUL, then on track 091° to cross VEYGA at or above 11000 and at 250K, then on track 091° to SOFAS, then on track 091° to HOLEZ, then on track 091° to cross JIGGY at or below 11000, then on track 091° to cross NCLUB at 8000, then on track 092° to GRANN, then on track 092°. Expect RADAR vectors to final approach course.

LANDING MIA RUNWAY 27: From FROGZ on track 116° to cross ENOLE between 11000 and 16000, then on track 116° to HAKUL, then on track 091° to cross VEYGA at or above 11000 and at 250K, then on track 091° to SOFAS, then on track 091° to HOLEZ, then on track 123° to cross COTOL at or below 11000, then on track 123° to cross MACYS at or above 8000, then on track 124° to REELN, then on track 091° to cross OLDDE at 6000, then on track 091°. Expect RADAR vectors to final approach course.

LANDING MIA RUNWAY 30: From FROGZ on track 116° to cross ENOLE between 11000 and 16000, then on track 116° to HAKUL, then on track 091° to cross VEYGA at or above 11000 and at 250K, then on track 091° to SOFAS, then on track 091° to HOLEZ, then on track 123° to cross COTOL at or below 11000, then on track 123° to cross MACYS at or above 8000, then on track 124° to REELN, then on track 124° to cross WNNER at 5000, then on track 124°. Expect RADAR vectors to final approach course.

LANDING 07FA/X51/HST/TMB: From FROGZ on track 130° to cross HATUG at 9000, then on heading 140°. Expect RADAR vectors to final approach course.

**FROGZ FIVE ARRIVAL (RNAV)**

MIAMI, FLORIDA