

(GLADZ4, GLADZ) 31OCT24

GLADZ FOUR DEPARTURE (RNAV) Transition Routes

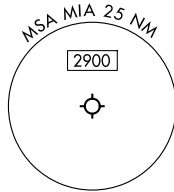
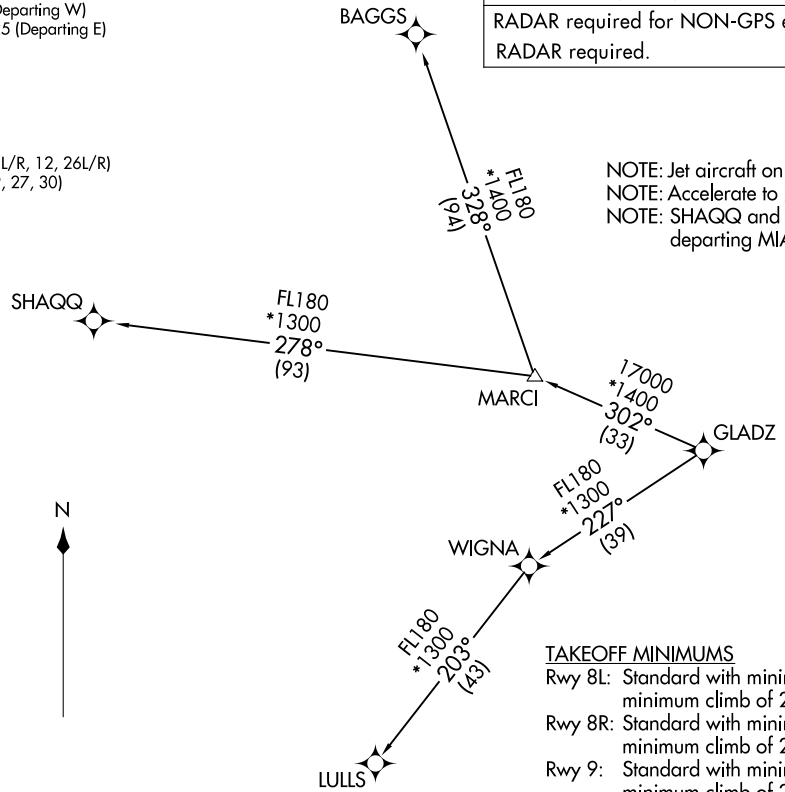
MIAMI, FLORIDA
MIAMI INTL (MIA)

MIAMI DEP CON
125.5 354.1 (Departing W)
126.85 290.325 (Departing E)
D-ATIS
133.675
CLNC DEL
135.35
CPDLC
GND CON
121.8 348.6 (8L/R, 12, 26L/R)
127.5 348.6 (9, 27, 30)
MIAMI TOWER
118.3 256.9

RNAV-1 DME/DME/IRU or GPS.
RADAR required for NON-GPS equipped aircraft.
RADAR required.

**TOP ALTITUDE:
5000**

NOTE: Jet aircraft only.
NOTE: Accelerate to 250K until leaving 10000, if unable, advise ATC.
NOTE: SHAQQ and BAGGS transitions ATC assigned except aircraft departing MIA.



TAKEOFF MINIMUMS

- Rwy 8L: Standard with minimum climb of 500'/NM to 520, then minimum climb of 215'/NM to 1400.
- Rwy 8R: Standard with minimum climb of 500'/NM to 520, then minimum climb of 235'/NM to 1400.
- Rwy 9: Standard with minimum climb of 500'/NM to 520, then minimum climb of 240'/NM to 1400.
- Rwy 12: Standard with minimum climb of 500'/NM to 520, then minimum climb of 230'/NM to 1400.
- Rwys 26L/R, 27, 30: Standard with minimum climb of 500'/NM to 520.

NOTE: Chart not to scale. (CONTINUED ON FOLLOWING PAGE)

(GLADZ4, GLADZ) 25331

AL-257 (FAA)
GLADZ FOUR DEPARTURE (RNAV) Transition Routes

MIAMI INTL (MIA)
MIAMI, FLORIDA

GLADZ FOUR DEPARTURE (RNAV)



DEPARTURE ROUTE DESCRIPTION SEE ADDITIONAL REQUIREMENTS ON AAUP

TAKEOFF RUNWAYS 8L/R: Climb on heading 092° to 520, then direct CSALT, then on track 007° to DEALZ, then on track 348° to LIIVV, then on track 282° to BLART, then on track 275° to SELFI, then on track 237° to cross GAYTR at or above 5000, thence. . . .

TAKEOFF RUNWAY 9: Climb on heading 092° to intercept course 082° to CSALT, then on track 007° to DEALZ, then on track 348° to LIIVV, then on track 282° to BLART, then on track 275° to SELFI, then on track 237° to cross GAYTR at or above 5000, thence. . . .

TAKEOFF RUNWAY 12: Climb on heading 124° to intercept course 078° to CSALT, then on track 007° to DEALZ, then on track 348° to LIIVV, then on track 282° to BLART, then on track 275° to SELFI, then on track 237° to cross GAYTR at or above 5000, thence. . . .

TAKEOFF RUNWAY 26L: Climb on heading 272° to intercept course 260° to KSENO, then on track 275° to cross GAYTR at or above 5000, thence. . . .

TAKEOFF RUNWAY 26R: Climb on heading 272° to intercept course 258° to KSENO, then on track 275° to cross GAYTR at or above 5000, thence. . . .

TAKEOFF RUNWAY 27: Climb on heading 272° to 520, then direct KSENO, then on track 275° to cross GAYTR at or above 5000, thence. . . .

TAKEOFF RUNWAY 30: Climb on heading 304° to intercept course 271° to cross GAYTR at or above 5000, thence. . . .

. . . .on track 258° to RUTLG, then on track 258° to GLADZ, then on transition.
Maintain 5000, expect clearance to filed altitude 10 minutes after departure.

BAGGS TRANSITION (GLADZ4.BAGGS)

LULLS TRANSITION (GLADZ4.LULLS)

SHAQQ TRANSITION (GLADZ4.SHAQQ)

SE-3. 19 MAR 2026 to 16 APR 2026

SE-3. 19 MAR 2026 to 16 APR 2026