

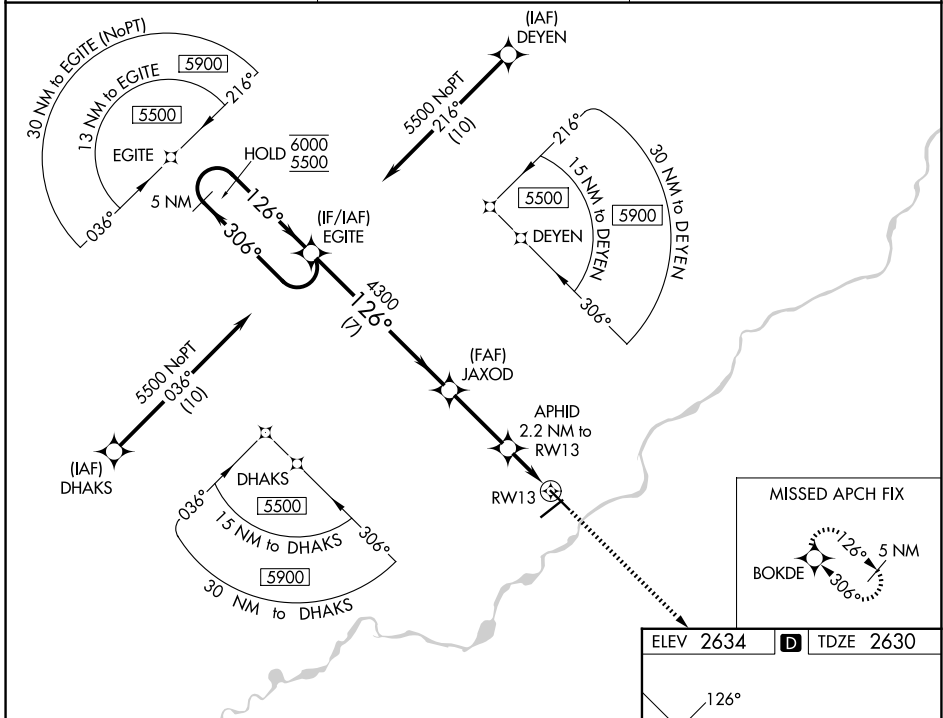
WAAS CH 97340 W13A	APP CRS 126°	Rwy Ldg TDZE Apt Elev	5624 2630 2634
--	------------------------	-----------------------------	---

RNAV (GPS) RWY 13

FRANK WILEY FLD (MLS)

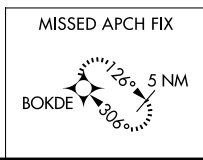
RNP APCH - GPS.	MISSED APPROACH: Climb to 6000 direct BOKDE and hold, continue climb-in-hold to 6000.
<p>For uncompensated Baro-VNAV systems, procedure NA below -24°C or above 54°C.</p>	

ASOS 135.575	SALT LAKE CENTER 126.85 305.2	UNICOM 123.0 (CTAF)
------------------------	---	-------------------------------

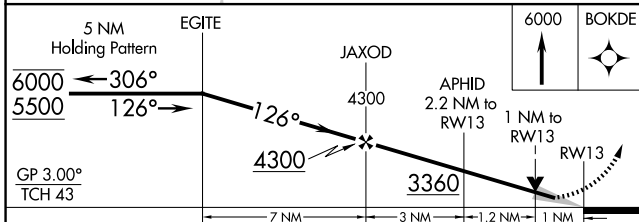


NW-1, 19 MAR 2026 to 16 APR 2026

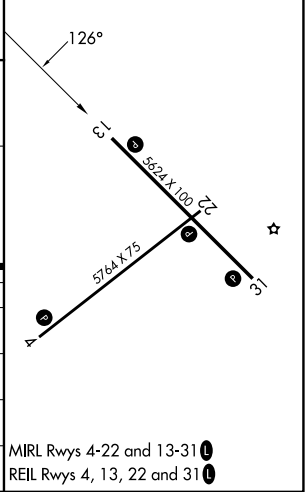
NW-1, 19 MAR 2026 to 16 APR 2026



ELEV 2634	D TDZE 2630
-----------	--------------------



CATEGORY	A	B	C	D
LPV DA		2880-1	250 (300-1)	
LNAV/VNAV DA		2880-1	250 (300-1)	
LNAV MDA		2980-1	350 (400-1)	
CIRCLING	3060-1 426 (500-1)	3100-1 466 (500-1)	3160-1½ 526 (600-1½)	3320-2¼ 686 (700-2¼)



MIRL Rwy 4-22 and 13-31
REIL Rwy 4, 13, 22 and 31