

WAAS CH 77924 W22A	APP CRS 223°	Rwy Ldg TDZE Apt Elev	5764 2630 2634
--	------------------------	-----------------------------	---

RNAV (GPS) RWY 22

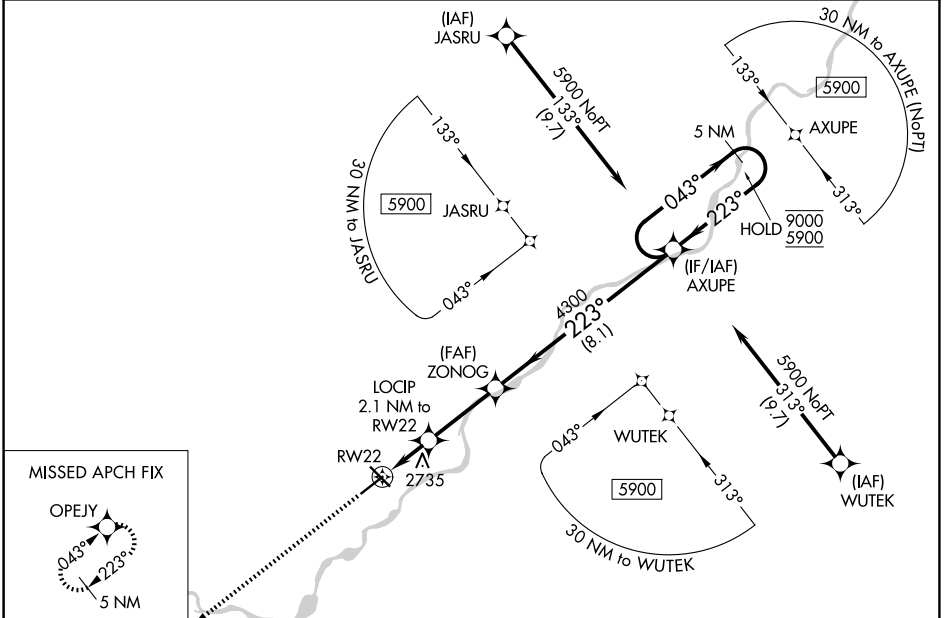
FRANK WILEY FLD (MLS)

RNP APCH-GPS.

⚠ Baro-VNAV and VDP NA when using Glendive altimeter setting. For uncompensated Baro-VNAV systems, LNAV/VNAV NA below -25°C or above 54°C. When local altimeter setting not received, use Glendive altimeter setting: increase LPV and LNAV/VNAV DA to 3047 and all visibilities ½ SM. Increase all MDA 180 feet and LNAV Cat C and D visibilities ¾ SM and Circling Cat C and D visibilities ½ SM.

MISSED APPROACH: Climb to 6000 direct OPEJY and hold, continue climb-in-hold to 6000.

ASOS 135.575	SALT LAKE CENTER 126.85 305.2	UNICOM 123.0 (CTAF) 0
------------------------	---	---------------------------------



MISSED APCH FIX

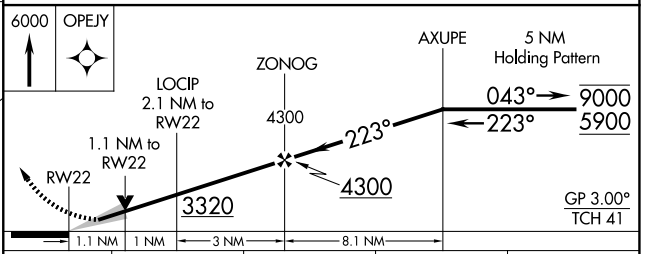
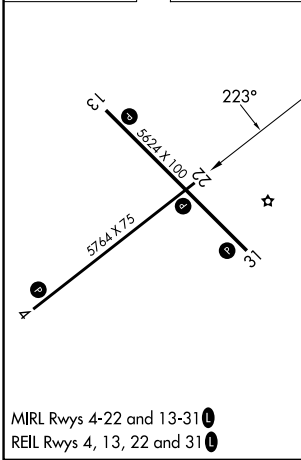
OPEJY

043°

223°

5 NM

ELEV 2634	D	TDZE 2630
-----------	----------	-----------



CATEGORY	A	B	C	D
LPV DA		2880-1	250 (300-1)	
LNAV/VNAV DA		2880-1	250 (300-1)	
LNAV MDA		3000-1	370 (400-1)	
CIRCLING	3060-1 426 (500-1)	3100-1 466 (500-1)	3160-1½ 526 (600-1½)	3320-2¼ 686 (700-2¼)

NW-1, 19 MAR 2026 to 16 APR 2026

NW-1, 19 MAR 2026 to 16 APR 2026