

APP CRS	Rwy Ldg	<b>5004</b>
<b>165°</b>	TDZE	<b>5033</b>
	Apt Elev	<b>5039</b>

# RNAV (GPS) RWY 16

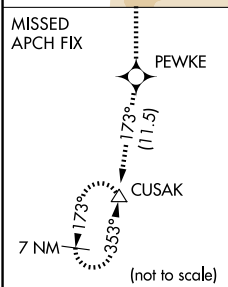
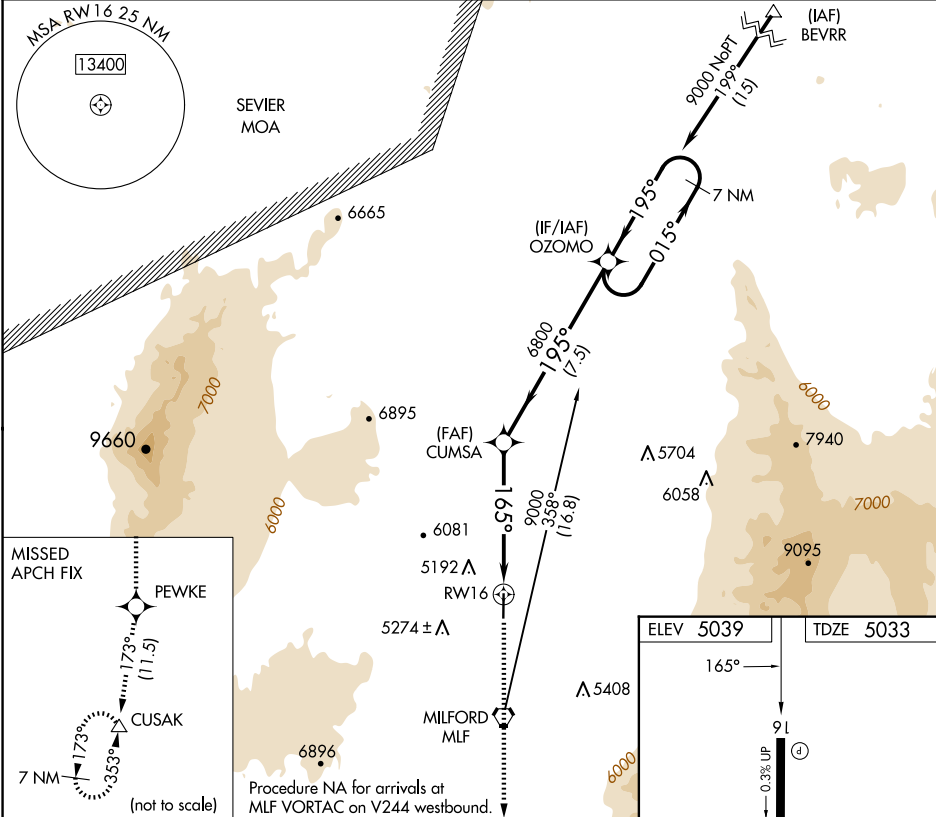
MILFORD MUNI/BEN AND JUDY BRISCOE FLD (MLF)

RNP APCH.

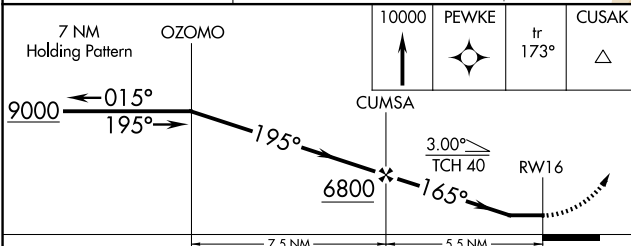
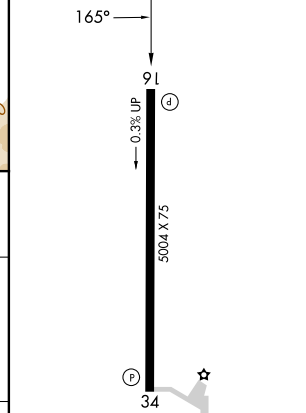
When local altimeter setting not received, use Cedar City altimeter setting and increase all MDA 200 feet and increase LNAV Cat C/D visibility 1/2 mile.  
 -27°C

MISSED APPROACH: Climb to 10000 direct PEWKE and on track 173° to CUSAK and hold.

ASOS <b>135.025</b>	SALT LAKE CENTER <b>125.575 379.275</b>	UNICOM <b>122.8 (CTAF) 0</b>
------------------------	--	---------------------------------



ELEV 5039	TDZE 5033
-----------	-----------



CATEGORY	A	B	C	D
LNAV MDA	5480-1	447 (500-1)	5480-1 3/8	447 (500-1 3/8)

MRL Rwy 16-34 0  
 REIL Rwy 16 and 34 0

SW-4, 19 MAR 2026 to 16 APR 2026

SW-4, 19 MAR 2026 to 16 APR 2026

# RNAV (GPS) RWY 16