

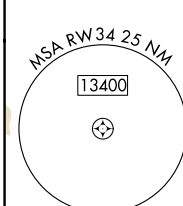
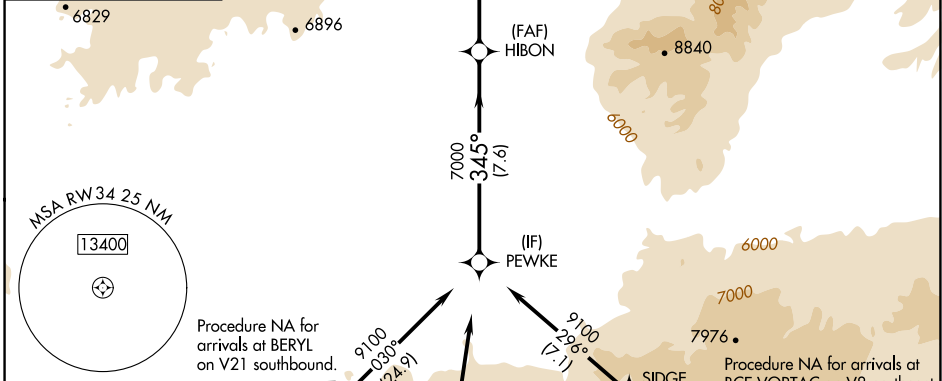
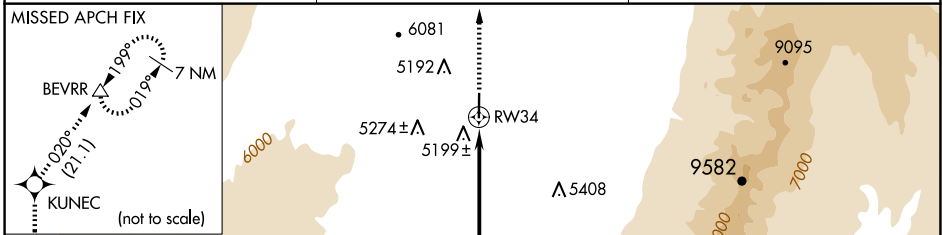
APP CRS	Rwy Ldg	5004
345°	TDZE	5039
	Apt Elev	5039

RNAV (GPS) RWY 34

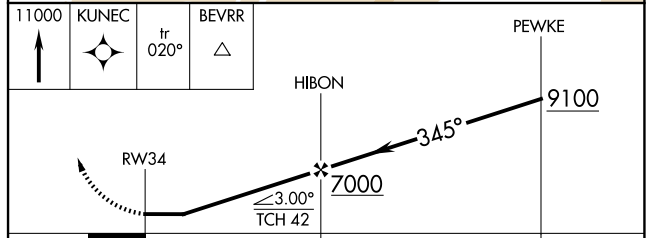
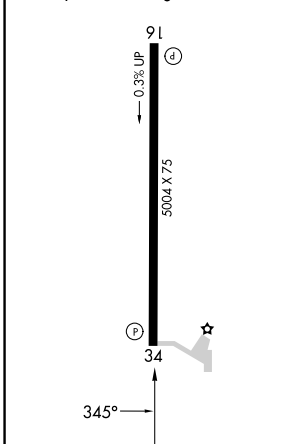
MILFORD MUNI/BEN AND JUDY BRISCOE FLD (MLF)

RNP APCH.	When local altimeter setting not received, use Cedar City altimeter setting and increase all MDA 180 feet; increase LNAV Cat C/D visibility ½ mile.	MISSED APPROACH: Climb to 11000 direct KUNEC and on track 020° to BEVRR and hold, continue climb-in-hold to 11000.
-----------	---	--

ASOS 135.025	SALT LAKE CENTER 125.575 379.275	UNICOM 122.8 (CTAF)
------------------------	--	-------------------------------



ELEV 5039	TDZE 5039
MIRL Rwy 16-34	REIL Rwy 16 and 34



CATEGORY	A	B	C	D
LNAV MDA	5460-1	421 (500-1)	5460-1¼	421 (500-1¼)