

SHAFF SEVEN ARRIVAL  
[SHAFF:SHAFF7] 31MAY12

BOSTON CENTER  
126.47 388.8  
134.3 256.9  
NEWARK APP CON  
121.15 379.9  
ATIS  
115.7 134.825

ROCHESTER  
110.0 ROC  
Chan 37

SYRACUSE  
117.0 SYR  
Chan 117

ROCKDALE  
112.6 RKA  
Chan 73

ALBANY  
115.3 ALB  
Chan 100

BARNES  
113.0 BAF  
Chan 77

Expect to cross  
10 NM east  
16000.

PAWLING  
114.3 PWL  
Chan 90

GENESEO  
108.2 GEE  
Chan 19

HANCOCK  
116.8 HNK  
Chan 115

Expect to cross at  
or below lowest  
usable flight level.

HUGUENOT  
116.1 HUU  
Chan 108

KINGSTON  
117.6 IGN  
Chan 123

SPARTA  
115.7 SAX  
Chan 104

- NOTE: Radar required.
- NOTE: STAR applicable to turbojet and non-turbojet aircraft capable of 250K.
- NOTE: North Atlantic arrivals via BOS file BAF transition. Domestic arrivals from the east file IGN Transition.
- NOTE: Expect to cross 10 NM east of BAF at or below 16000.
- NOTE: Expect to cross HNK at or below lowest useable flight level.

- NOTE: USE CAUTION:  
Parachute operations  
4 NM radius of 5NY5  
at or below 14500 MSL.
- NOTE: USE CAUTION:  
Glider activity between  
FLOSI and SHAFF  
intersections.

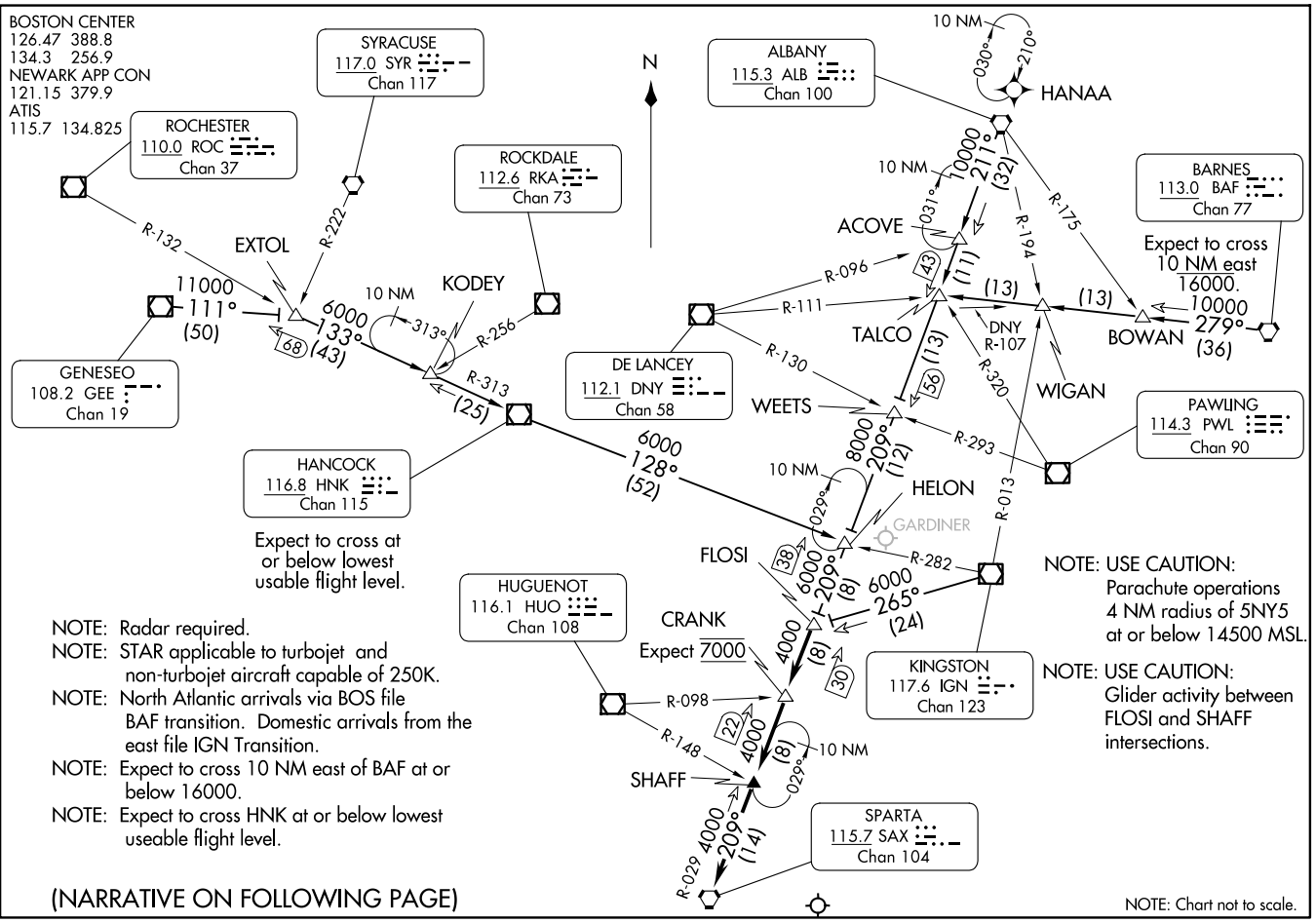
(NARRATIVE ON FOLLOWING PAGE)

NOTE: Chart not to scale.

(SHAFF:SHAFF7) 24249  
SHAFF SEVEN ARRIVAL

AL-285 (FAA)

NEWARK LIBERTY INTL (E/W/R)  
NEWARK, NEW JERSEY



ARRIVAL ROUTE DESCRIPTION

ALBANY TRANSITION (ALB.SHAFF7): From over ALB VORTAC on ALB R-211 to WEETS INT, then on SAX R-029 to FLOSI INT. Thence. . . .

BARNES TRANSITION (BAF.SHAFF7): From over BAF VORTAC on BAF R-279 to TALCO INT, then on ALB R-211 to WEETS INT, then on SAX R-029 to FLOSI INT. Thence. . . .

GENESEO TRANSITION (GEE.SHAFF7): From over GEE VOR/DME on GEE R-111 to EXTOL INT, then on HNK R-313 to HNK VOR/DME, then on HNK R-128 to HELON INT, then on SAX R-029 to FLOSI INT. Thence. . . .

HANCOCK TRANSITION (HNK.SHAFF7): From over HNK VOR/DME on HNK R-128 to HELON INT, then on SAX R-029 to FLOSI INT. Thence. . . .

KINGSTON TRANSITION (IGN.SHAFF7): From over IGN VOR/DME on IGN R-265 to FLOSI INT. Thence. . . .

. . . . From over FLOSI INT on SAX R-029 to CRANK INT, then to SHAFF INT, then to SAX VORTAC. Expect radar vectors to final approach course.

NE-2, 19 MAR 2026 to 16 APR 2026

NE-2, 19 MAR 2026 to 16 APR 2026