

WAAS CH 42910 W06A	APP CRS 063°	Rwy Ldg TDZE 156 Apt Elev 164	5001
--	------------------------	---	-------------

RNAV (GPS) RWY 6

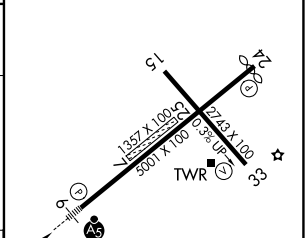
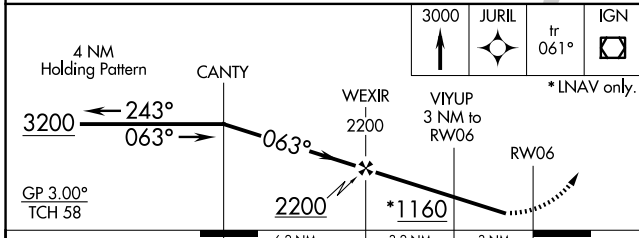
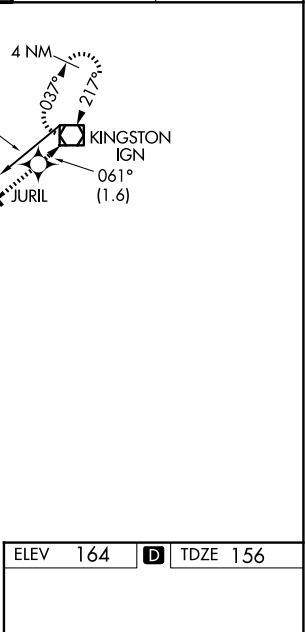
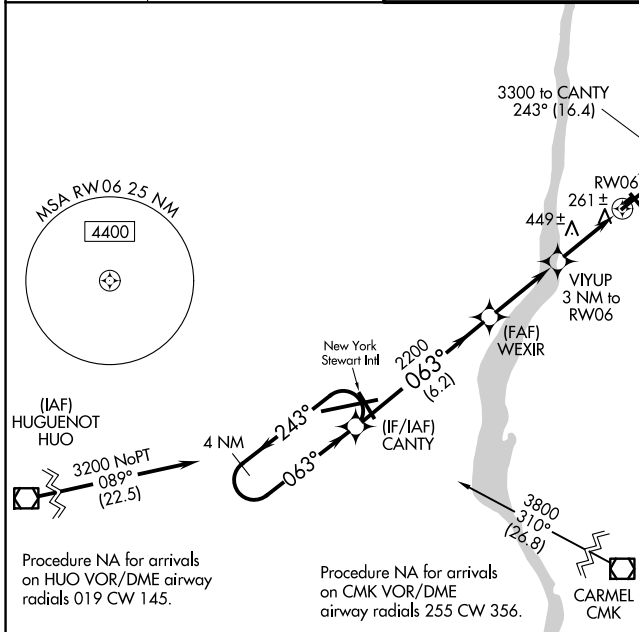
HUDSON VALLEY RGNL (POU)

⚠ Circling NA to Rwy 7 and 25. Baro-VNAV NA when using Montgomery altimeter setting. For uncompensated Baro-VNAV systems, LNAV/VNAV NA below -1.5°C (5°F) or above 49°C (120°F). Circling Rwy 15, 33 NA at night. Rwy 6 helicopter visibility reduction below 3/4 SM NA. Rwy 15, 33 helicopter visibility reduction below 1 SM NA. DME/DME RNP-0.3 NA. When local altimeter setting not received, use Montgomery altimeter setting; increase LPV DA to 574; increase LNAV/VNAV DA to 809 and all Cats visibility 1/4 SM; increase all MDA 80 feet and LNAV Cats C/D and Girdling Cats C/D visibility 1/4 SM; inop table does not apply to LNAV Cats A/B; for inop ALS, increase LPV all Cats visibility to 1 1/8 SM. For inop ALS when using Montgomery altimeter setting, increase LPV all Cats visibility to 1 3/8 SM, LNAV/VNAV all Cats visibility to 2 SM and LNAV Cats C/D to 1 7/8 SM.

MALSR

MISSED APPROACH:
Climb to 3000 direct JURIL and on track 061° to IGN VOR/DME and hold, continue climb-in-hold to 3000.

ATIS 126.75	NEW YORK APP CON 132.75 363.1	DUTCHESS COUNTY TOWER ★ 124.0 (CTAF) 269.15	GND CON 121.8	UNICOM 122.95
-----------------------	---	---	-------------------------	-------------------------



CATEGORY	A	B	C	D
LPV DA		503-1	347 (400-1)	
LNAV/VNAV DA		738-1 1/2	582 (600-1 1/2)	
LNAV MDA	740-1	584 (600-1)	740-1 1/4	584 (600-1 1/4)
CIRCLING	760-1 596 (600-1)	840-1 676 (700-1)	940-2 1/4 776 (800-2 1/4)	1080-3 916 (1000-3)

ELEV 164 **D** TDZE 156

MIRL Rwy 15-33
HIRL Rwy 6-24 **!**
REIL Rwy 24 **!**
REIL Rwy 33

NE-2, 19 MAR 2026 to 16 APR 2026

NE-2, 19 MAR 2026 to 16 APR 2026