

VOR/DME IGN 117.6 Chan 123	APP CRS 242°	Rwy Ldg TDZE 157 Apt Elev 164	4886
--	------------------------	---	-------------

VOR RWY 24

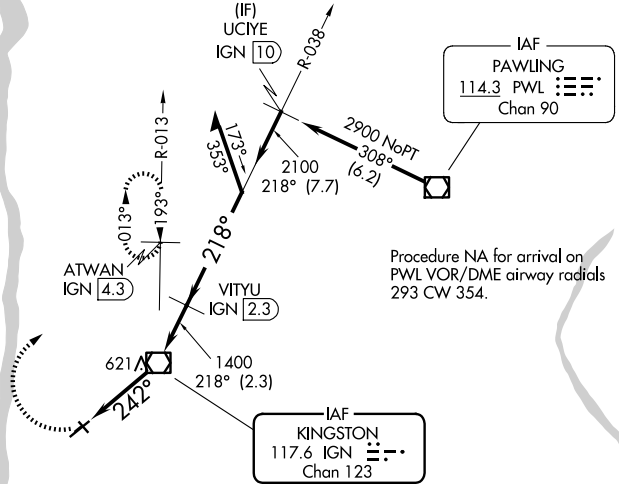
HUDSON VALLEY RGNL (POU)

⚠ Circling NA to Rwy 7 and 25. Circling Rwy 15, 33 NA at night. Rwy 24 helicopter visibility reduction below 3/4 SM NA. Rwy 15, 33 helicopter visibility reduction below 1 NA. DME required. When local altimeter not received, use Montgomery altimeter setting and increase all MDAs 80 feet and Circling visibility Cat A 1/4 SM.

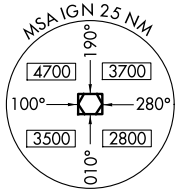
MISSED APPROACH: Climbing right turn to 3000 on heading 064° and IGN VOR/DME R-013 to ATWAN/4.3 DME and hold, continue climb-in-hold to 3000.

ATIS 126.75	NEW YORK APP CON 132.75 363.1	DUTCHESS COUNTY TOWER * 124.0 (CTAF) 269.15	GND CON 121.8	UNICOM 122.95
-----------------------	---	---	-------------------------	-------------------------

DME REQUIRED

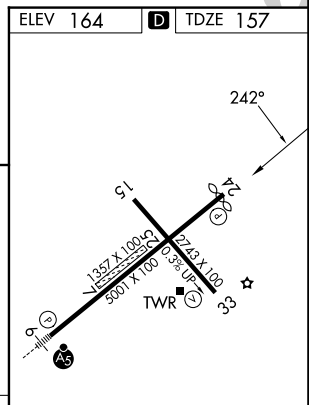
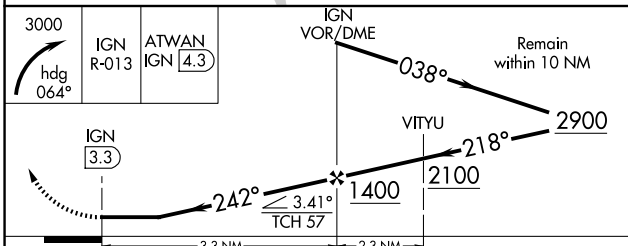


Procedure NA for arrival on PWL VOR/DME airway radials 293 CW 354.



NE-2, 19 MAR 2026 to 16 APR 2026

NE-2, 19 MAR 2026 to 16 APR 2026



CATEGORY	A	B	C	D
	940-1 783 (800-1)	940-1 1/4 783 (800-1 1/4)	940-2 1/2	783 (800-2 1/2)
CIRCLING	940-1 776 (800-1)	940-1 1/4 776 (800-1 1/4)	940-2 1/2 776 (800-2 1/2)	1080-3 916 (1000-3)

MRL Rwy 15-33
HIRL Rwy 6-24
REIL Rwy 24
REIL Rwy 33