

# NUTY ONE DEPARTURE (RNAV) Departure Routes

NORFOLK DEP CON 125.2 363.125 ATIS 127.15 CLNC DEL 118.5 GND CON 121.9 NORFOLK TOWER 120.8 257.8	RNAV1 DME/DME/IRU or GPS. RADAR required.	<b>TOP ALTITUDE: 4000</b>
---	--	-------------------------------

**TAKEOFF MINIMUMS:**  
Rwys 5, 14, 23, 32: Standard.

**NOTE:** HCM Transition for turboprops and props only.  
**NOTE:** Do not file THHMP Transition - to be assigned by ATC.

**NOTE:** Chart not to scale.

(CONTINUED ON FOLLOWING PAGE)



## DEPARTURE ROUTE DESCRIPTION

- TAKEOFF RUNWAY 5: Climb on heading 047° to 526, then on heading 047°, for RADAR vectors to cross SCTYP at or above 2000, thence....
- TAKEOFF RUNWAY 14: Climb on heading 137° to 526, then on heading 137°, for RADAR vectors to cross SCTYP at or above 2000, thence....
- TAKEOFF RUNWAY 23: Climb on heading 227° to 526, then on heading 227°, for RADAR vectors to cross SCTYP at or above 2000, thence....
- TAKEOFF RUNWAY 32: Climb on heading 317° to 526, then on heading 317°, for RADAR vectors to cross SCTYP at or above 2000, thence....

....on track 279° to NUTYI, then on assigned transition. Maintain 4000, expect filed altitude 10 minutes after departure.

- EYOBI TRANSITION (NUTY1 .EYOBI)
- HARCUM TRANSITION (NUTY1 .HCM)
- HYTRA TRANSITION (NUTY1 .HYTRA)
- KELLE TRANSITION (NUTY1 .KELLE)
- PBCUP TRANSITION (NUTY1 .PBCUP)
- RALEIGH/DURHAM TRANSITION (NUTY1 .RDU)
- SHLBK TRANSITION (NUTY1 .SHLBK)
- THHMP TRANSITION (NUTY1 .THHMP)

NE-3, 19 MAR 2026 to 16 APR 2026

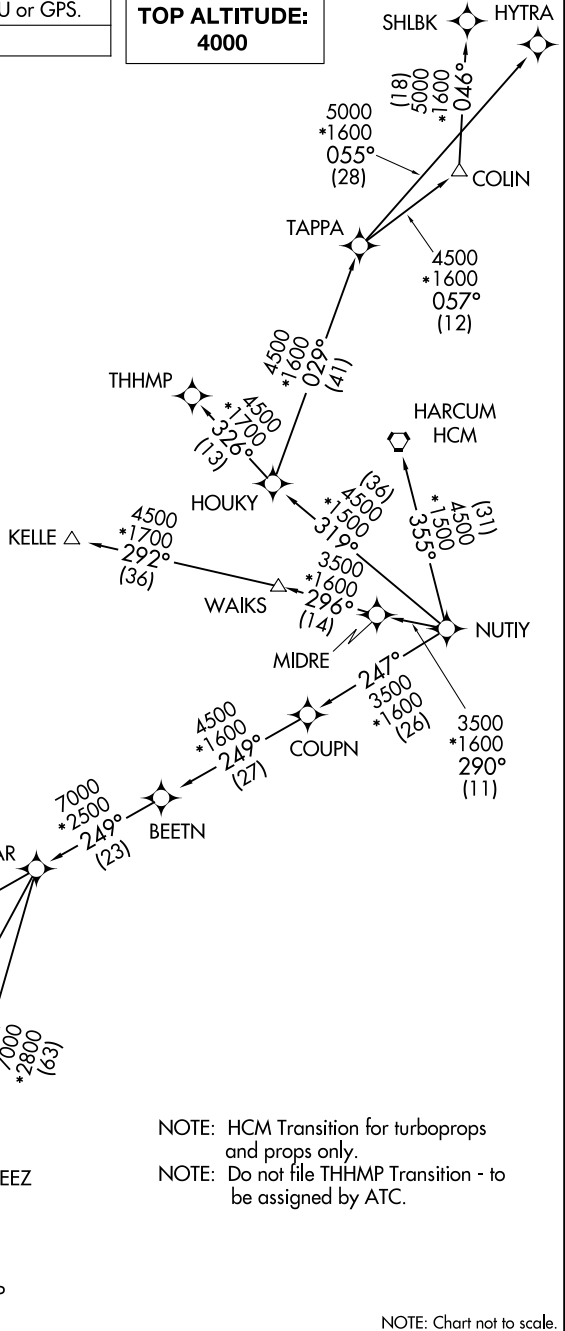
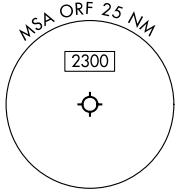
NE-3, 19 MAR 2026 to 16 APR 2026

# NUTY ONE DEPARTURE (RNAV) Transition Routes

NORFOLK DEP CON  
125.2 363.125  
ATIS  
127.15  
CLNC DEL  
118.5  
GND CON  
121.9  
NORFOLK TOWER  
120.8 257.8

RNAV1 DME/DME/IRU or GPS.  
RADAR required.

**TOP ALTITUDE:  
4000**



NOTE: HCM Transition for turboprops and props only.  
NOTE: Do not file THHMP Transition - to be assigned by ATC.

NOTE: Chart not to scale.

NE-3, 19 MAR 2026 to 16 APR 2026

NE-3, 19 MAR 2026 to 16 APR 2026