

# CNDEL FIVE DEPARTURE (RNAV)

NORCAL DEP CON  
 135.1 307.2  
 D-ATIS 133.775  
 CLNC DEL 121.1  
 CPDLC  
 GND CON  
 121.9 (Rwys 10L/R, 28L/28R, 15/33)  
 121.75 (Rwy 12/30)  
 OAKLAND TOWER  
 118.3 291.65 (Rwys 10L/R, 28L/28R, 15/33)  
 127.2 256.9 (Rwy 12/30)

**TOP ALTITUDE:**  
**10000**

**DEPARTURE ROUTE DESCRIPTION**

**TAKEOFF RUNWAYS 28L, 28R:** Climb on heading 278° to 520, then direct to cross LEJAY at or below 2000, then on track 296° to CNDEL, then left turn direct to cross PORTE at or below 10000. Thence. . . .

**TAKEOFF RUNWAY 30:** Climb on heading 296° to 520, then direct to cross LEJAY at or below 2000, then on track 296° to CNDEL, then left turn direct to cross PORTE at or below 10000. Thence. . . .

. . . . on (transition). Maintain 10000, expect filed altitude 10 minutes after departure.

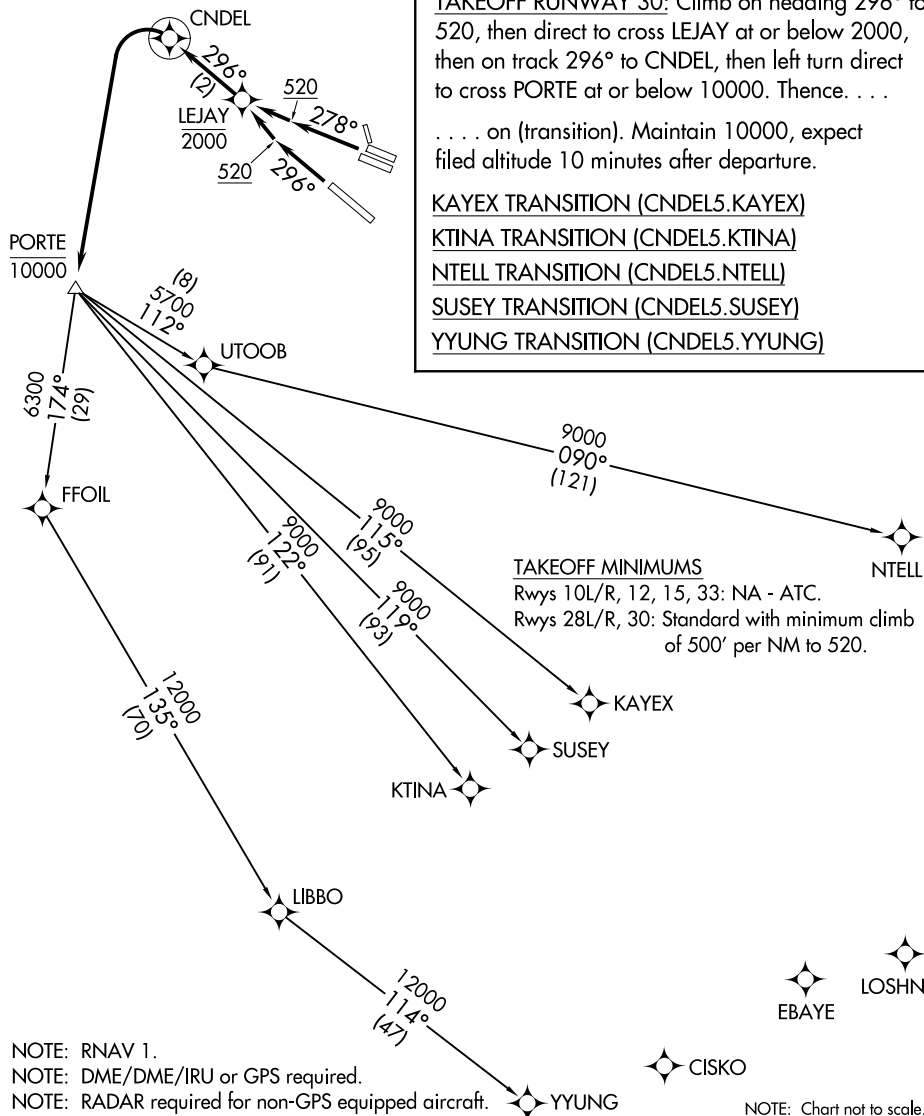
KAYEX TRANSITION (CNDEL5.KAYEX)

KTINA TRANSITION (CNDEL5.KTINA)

NTELL TRANSITION (CNDEL5.NTELL)

SUSEY TRANSITION (CNDEL5.SUSEY)

YYUNG TRANSITION (CNDEL5.YYUNG)



NOTE: RNAV 1.  
 NOTE: DME/DME/IRU or GPS required.  
 NOTE: RADAR required for non-GPS equipped aircraft.

NOTE: Chart not to scale.

# CNDEL FIVE DEPARTURE (RNAV)

SW-2, 19 MAR 2026 to 16 APR 2026

SW-2, 19 MAR 2026 to 16 APR 2026