

LOC/DME I-INB 108.7 Chan 24	APP CRS 296°	Rwy Ldg 10000 TDZE 9 Apt Elev 9
--	------------------------	--

ILS RWY 30 (SA CAT I)

OAKLAND SAN FRANCISCO BAY (OAK)

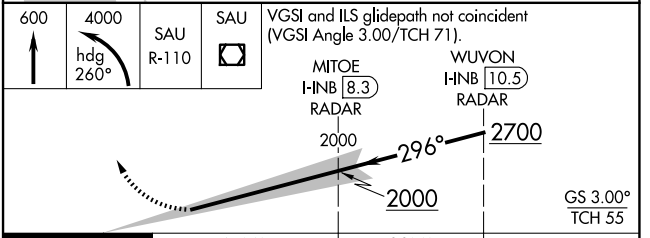
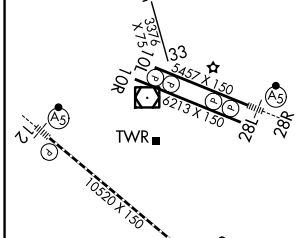
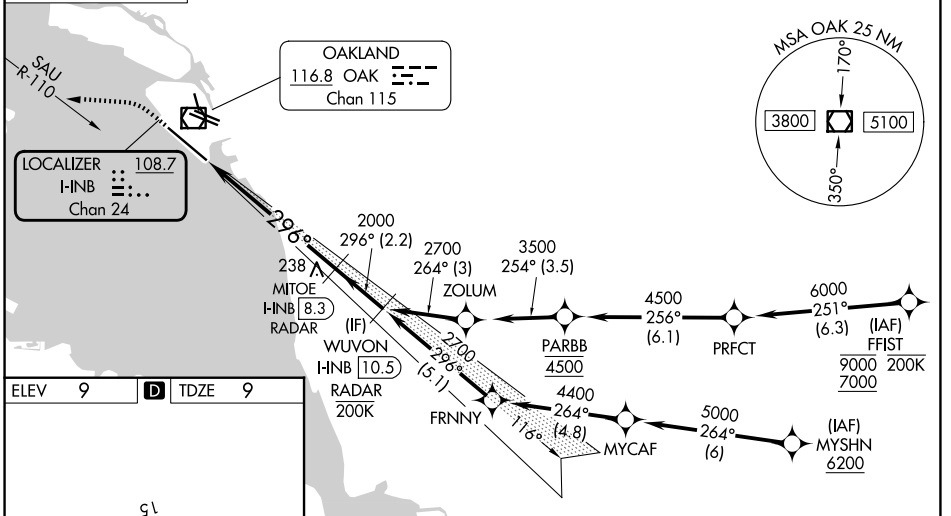
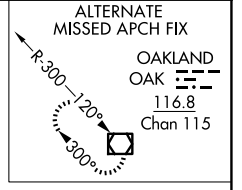
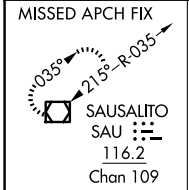
RNP APCH - GPS. From FFI1 or MYSHN.
DME or RADAR required.

Requires specific OPSPEC, MSPEC, or LOA approval. Missed approach requires minimum climb of 213 feet per NM to 1540, if unable to meet climb gradient, see ILS or LOC RWY 30.

ALSF-2

MISSED APPROACH: Climb to 600 then climbing left turn to 4000 on heading 260° and on SAU VOR/DME R-110 to SAU VOR/DME and hold, continue climb-in-hold to 4000.

D-ATIS 133.775	NORCAL APP CON 125.35 263.15	OAKLAND TOWER 118.3 291.65 (10L/R-28L/R, 15-33) 127.2 256.9 (12-30)	GND CON 121.9 (10L/R-28L/R, 15-33) 121.75 (12-30)
--------------------------	--	---	---



ELEV 9	D	TDZE 9		
REIL Rwy 10R	TDZ/CL Rwy 30	MIRL Rwy 15-33		
HIRL Rwys 12-30, 10L-28R, 10R-28L				
CATEGORY	A	B	C	D
S-ILS 30	RA 150/14		150 DA 159	
SA CATEGORY I ILS - SPECIAL AIRCREW & AIRCRAFT CERTIFICATION REQUIRED				

SW-2, 19 MAR 2026 to 16 APR 2026

SW-2, 19 MAR 2026 to 16 APR 2026