

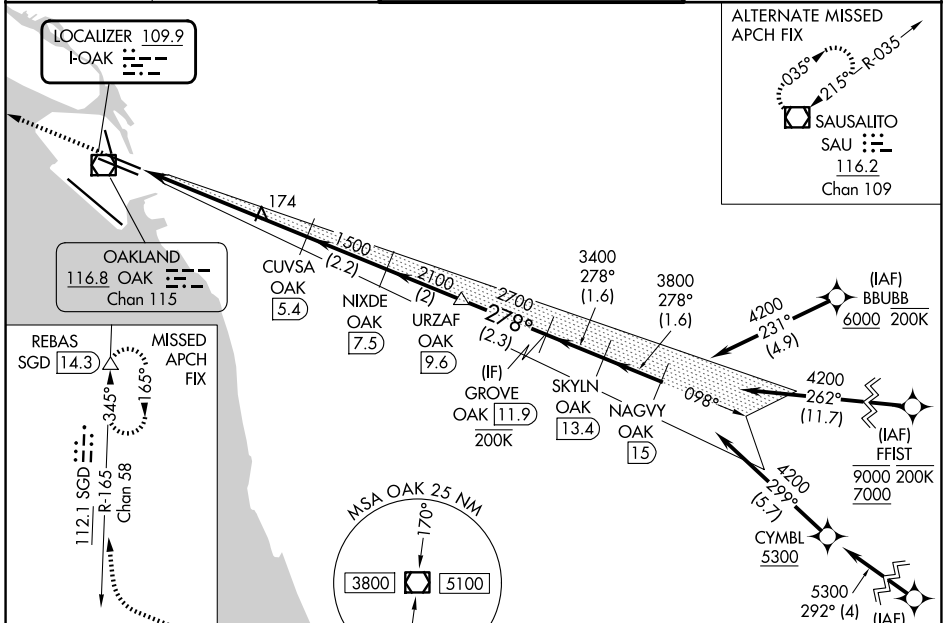
LOC I-OAK 109.9	APP CRS 278°	Rwy Ldg 28R 28L	5457 6213
		TDZE	7 9
		Apt Elev	9 9

ILS or LOC RWY 28R

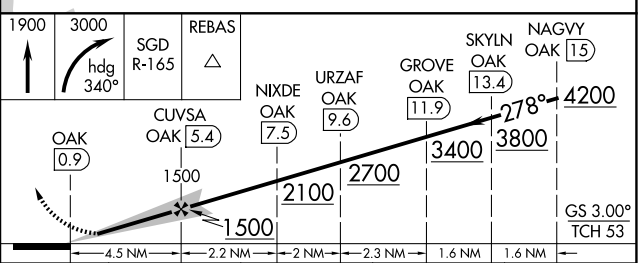
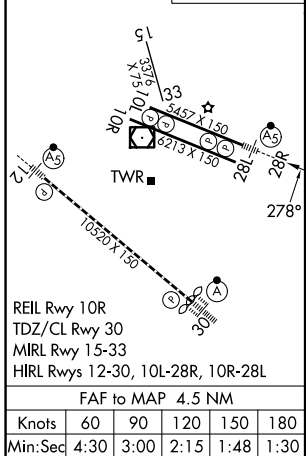
OAKLAND SAN FRANCISCO BAY (OAK)

RNP APCH - GPS. From BBUBB or FFI1T or MYSHN.		MALSR Rwy 28R	MISSED APPROACH: Climb to 1900 then climbing right turn to 3000 on heading 340° and SGD VORTAC R-165 to REBAS/SGD 14.3 DME and hold.
DME required.			
<p>▼ DME from OAK VOR/DME. Simultaneous reception of I-OAK and OAK DME required.</p> <p>▲ *RVR 1800 authorized with use of FD or AP or HUD to DA.</p>			

D-ATIS 133.775	NORCAL APP CON 125.35 263.15	OAKLAND TOWER 118.3 291.65 (10L/R-28L/R, 15-33) 127.2 256.9 (12-30)	GND CON 121.9 (10L/R-28L/R, 15-33) 121.75 (12-30)
--------------------------	--	---	---



ELEV 9	D	TDZE 28R 7	TDZE 28L 9
--------	----------	------------	------------



CATEGORY	A	B	C	D
S-ILS 28R*	207/24 200 (200-1/2)			
S-LOC 28R	440/24	433 (500-1/2)	440/40	433 (500-3/4)
SIDESTEP 28L	440-1	431 (500-1)	440-1 1/2	431 (500-2)
CIRCLING	560-1	551 (600-1)	660-1 3/4	1400-3

SW-2, 19 MAR 2026 to 16 APR 2026

SW-2, 19 MAR 2026 to 16 APR 2026