

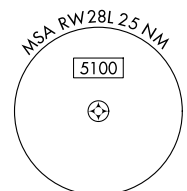
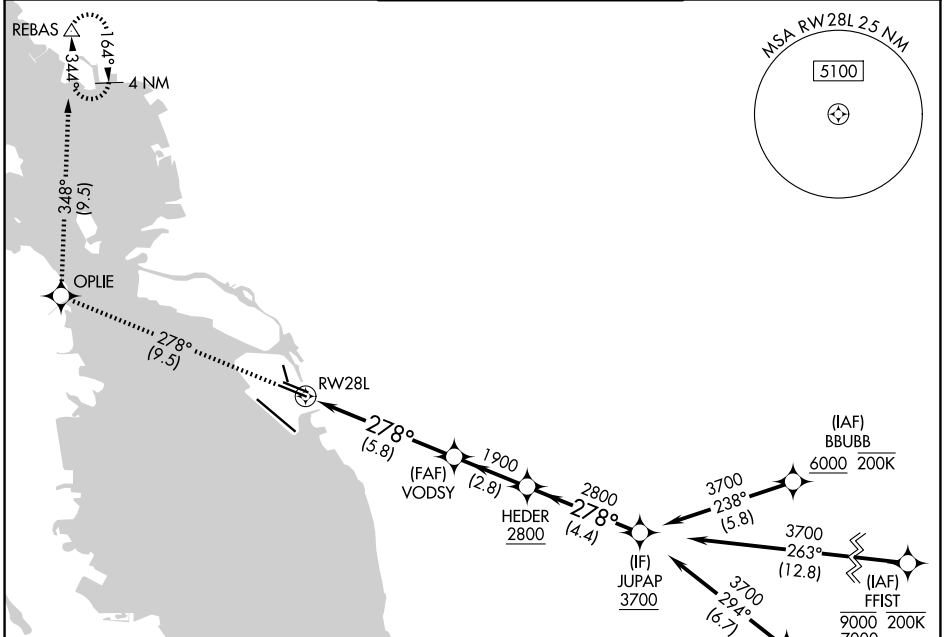
APP CRS <b>278°</b>	Rwy Ldg TDZE Apt Elev	<b>6213</b> <b>9</b> <b>9</b>
------------------------	-----------------------------	-------------------------------------

# RNAV (RNP) Z RWY 28L

OAKLAND SAN FRANCISCO BAY (OAK)

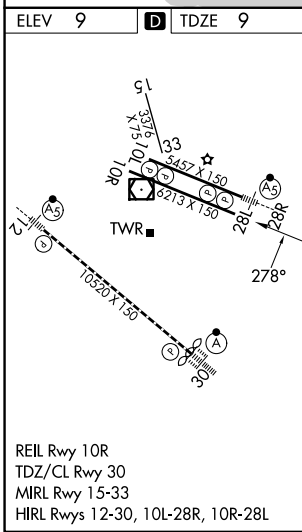
RNP AR APCH - GPS. Authorization required.		MISSED APPROACH: Climb to 3000 on track 278° to OPLIE and on track 348° to REBAS and hold.
For uncompensated Baro-VNAV systems, procedure NA below 2°C or above 54°C.		

D-ATIS <b>133.775</b>	NORCAL APP CON <b>125.35 263.15</b>	OAKLAND TOWER <b>118.3 291.65</b> (10L/R-28L/R, 15-33) <b>127.2 256.9</b> (12-30)	GND CON <b>121.9</b> (10L/R-28L/R, 15-33) <b>121.75</b> (12-30)
--------------------------	----------------------------------------	-----------------------------------------------------------------------------------------	-----------------------------------------------------------------------



SW-2, 19 MAR 2026 to 16 APR 2026

SW-2, 19 MAR 2026 to 16 APR 2026



ELEV 9	<b>D</b>	TDZE 9				
3000	OPLIE	tr 278°	REBAS	tr 348°	VGS1 and RNAV glidepath not coincident (VGS1 Angle 3.00/TCH 50).	JUPAP
			VODSY	HEDER		
			1900	2800		3700
				1900		
						GP 3.00° TCH 55
			5.8 NM	2.8 NM	4.4 NM	
CATEGORY	A	B	C	D		
RNP 0.10 DA		306/45	297 (300-¾)			
RNP 0.15 DA		359/55	350 (400-1)			
RNP 0.30 DA		425/60	416 (500-1¼)			
<b>AUTHORIZATION REQUIRED</b>						