

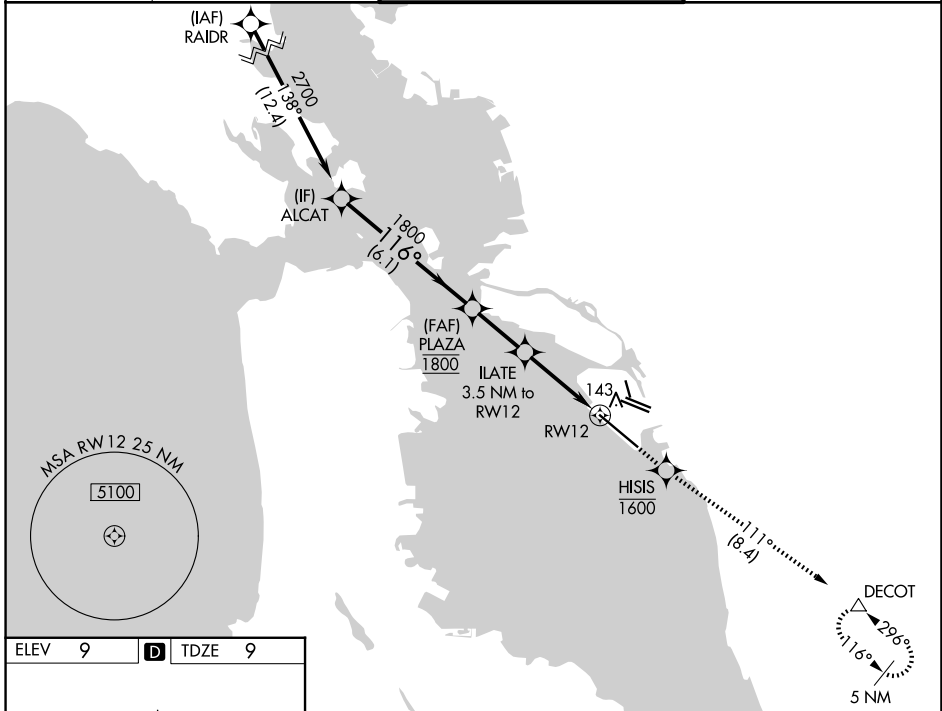
| | | |
|--|------------------------|--|
| WAAS CH 86418 W12A | APP CRS 116° | Rwy Ldg 10000 TDZE 9 Apt Elev 9 |
|--|------------------------|--|

RNAV (GPS) Y RWY 12

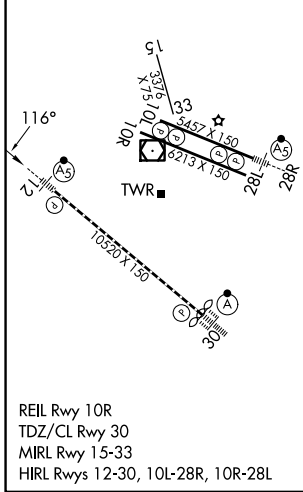
OAKLAND SAN FRANCISCO BAY (OAK)

| | | |
|---|-------------------|---|
| <p>▼ For uncompensated Baro-VNAV systems, LNAV/VNAV NA below 0°C (32°F) or above 54°C (130°F). DME/DME RNP-0.3 NA. #RVR 1800 authorized with use of FD or AP or HUD to DA.</p> | <p>MALSR </p> | <p>MISSED APPROACH: Climb direct HISIS to cross HISIS at or below 1600, then climb to 5400 on track 111° to DECOT and hold, continue climb-in-hold to 5400.</p> |
| | | |

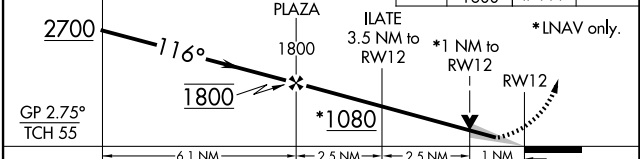
| | | | |
|--------------------------|--|---|---|
| D-ATIS 133.775 | NORCAL APP CON 125.35 263.15 | OAKLAND TOWER 118.3 291.65 (10L/R-28L/R, 15-33) 127.2 256.9 (12-30) | GND CON 121.9 (10L/R-28L/R, 15-33) 121.75 (12-30) |
|--------------------------|--|---|---|



| | | |
|--------|----------|--------|
| ELEV 9 | D | TDZE 9 |
|--------|----------|--------|



VGSI and RNAV glidepath not coincident (VGSI Angle 2.75/TCH 70).



| CATEGORY | A | B | C | D |
|--------------|--------|-------------|------------------------|-------------------------|
| LPV DA# | | 209/24 | 200 (200-½) | |
| LNAV/VNAV DA | | 304/27 | 295 (300-⅝) | |
| LNAV MDA | 360/24 | 351 (400-½) | 360/30 | 351 (400-⅝) |
| CIRCLING | 560-1 | 551 (600-1) | 660-1¾ 651 (700-1¾) | 1380-3 1371 (1400-3) |

SW-2, 19 MAR 2026 to 16 APR 2026

SW-2, 19 MAR 2026 to 16 APR 2026