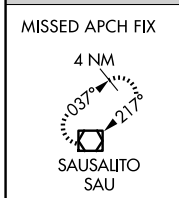
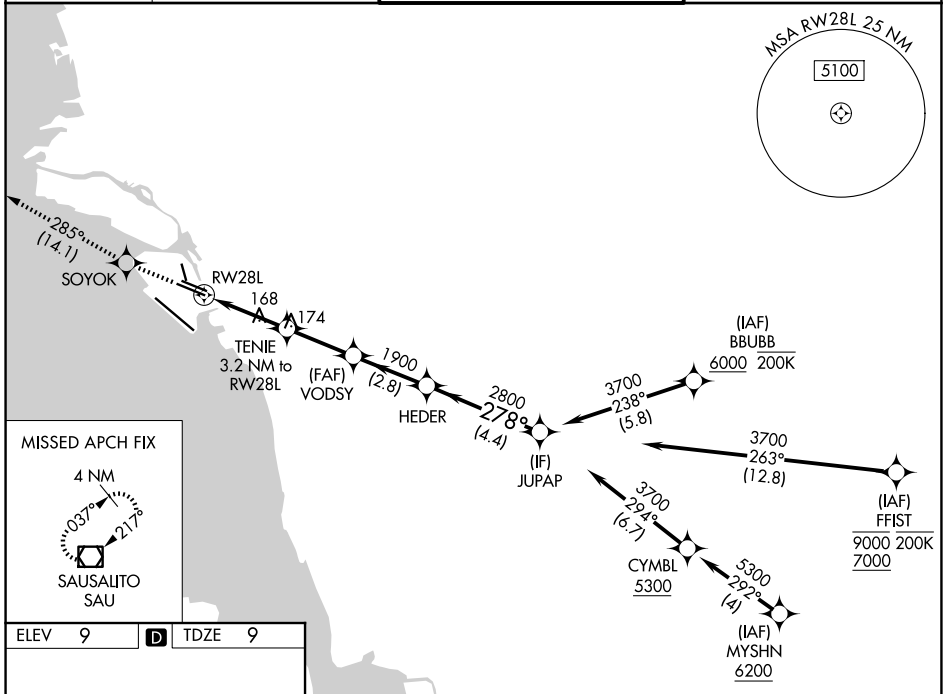


WAAS CH 72700 W28A	APP CRS 278°	Rwy Ldg 6213 TDZE 9 Apt Elev 9
--	------------------------	---

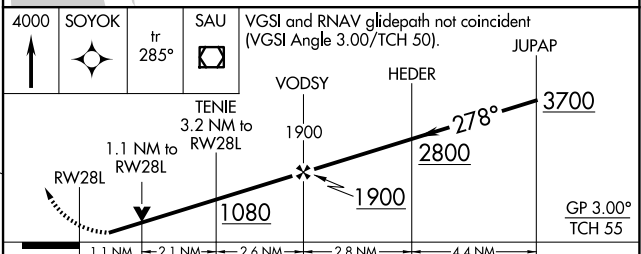
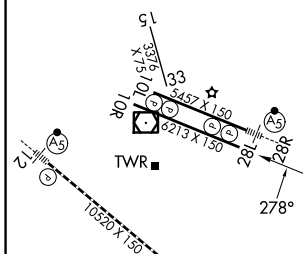
RNAV (GPS) Y RWY 28L

OAKLAND SAN FRANCISCO BAY (OAK)

RNP APCH - GPS.		OAKLAND TOWER 118.3 291.65 (10L/R-28L/R, 15-33) 127.2 256.9 (12-30)		GND CON 121.9 (10L/R-28L/R, 15-33) 121.75 (12-30)	
<p>▼ Rwy 28L helicopter visibility reduction below RVR 4000 NA. ▲ For uncompensated Baro-VNAV systems, LNAV/VNAV NA below 2°C or above 54°C.</p>		<p>MISSED APPROACH: Climb to 4000 direct SOYOK and on track 285° to SAU VOR/DME and hold, continue climb-in-hold to 4000.</p>			



ELEV 9	D	TDZE 9
--------	----------	--------



CATEGORY	A	B	C	D
LPV DA		259/40	250 (300-3/4)	
LNAV/VNAV DA		387/55	378 (400-1)	
LNAV MDA	420/55	411 (500-1)	420/60	411 (500-1 1/4)
CIRCLING	560-1	551 (600-1)	660-1 3/4 651 (700-1 3/4)	1400-3 1391 (1400-3)

SW-2, 19 MAR 2026 to 16 APR 2026

SW-2, 19 MAR 2026 to 16 APR 2026