

(SALAD5.SALAD) 25275
SALAD FIVE DEPARTURE

AL-294 (FAA)

OAKLAND SAN FRANCISCO BAY (OAK)
 OAKLAND, CALIFORNIA

NORCAL DEP CON
 120.9 323.2
 D-ATIS
 133.775
 CLNC DEL
 121.1
 CPDLC
 GND CON
 121.9 (Rwys 28L/R)
 OAKLAND TOWER
 118.3 291.65 (Rwys 28L/R)

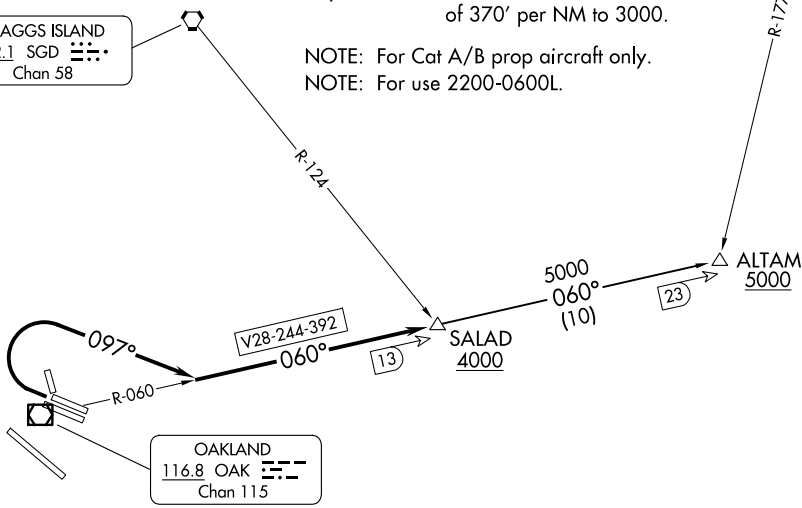
**TOP ALTITUDE:
 ASSIGNED BY ATC**

SACRAMENTO
 115.2 SAC
 Chan 99

TAKEOFF MINIMUMS
 Rwys 10L, 10R, 12, 15, 30, 33: NA-ATC.
 Rwys 28L, 28R: Standard with minimum climb
 of 370' per NM to 3000.

NOTE: For Cat A/B prop aircraft only.
 NOTE: For use 2200-0600L.

SCAGGS ISLAND
 112.1 SGD
 Chan 58



SW-2, 19 MAR 2026 to 16 APR 2026

SW-2, 19 MAR 2026 to 16 APR 2026

NOTE: Chart not to scale.

DEPARTURE ROUTE DESCRIPTION

TAKEOFF RUNWAYS 28 L/R: Climbing right turn heading 097° to intercept OAK VOR/DME R-060 to cross SALAD/OAK 13 DME at or above 4000, thence
 on ALTAM transition. Maintain ATC assigned altitude. Expect filed altitude 10 minutes after departure.

ALTAM TRANSITION (SALAD5.ALTAM): From over SALAD on OAK R-060 to ALTAM.

SALAD FIVE DEPARTURE
 (SALAD5.SALAD) 17AUG17

OAKLAND, CALIFORNIA
 OAKLAND SAN FRANCISCO BAY (OAK)