

SILENT THREE DEPARTURE

NORCAL DEP CON
120.9 323.2
D-ATIS
133.775
CLNC DEL
121.1
CPDLC

RED BLUFF
115.7 RBL
Chan 104

**TOP ALTITUDE:
ASSIGNED BY ATC**

MENDOCINO
112.3 ENI
Chan 70

WILLIAMS
114.4 IIA
Chan 91

SAWNA

TAKEOFF MINIMUMS

Rwys 10L/R, 12, 15, 28L/R, 33: NA-ATC.
Rwy 30: Standard with minimum climb of
405' per NM to 6000.

SASSU

SCAGGS ISLAND
112.1 SGD
Chan 58

SACRAMENTO
115.2 SAC
Chan 99

REBAS
6000

SAUSALITO
116.2 SAU
Chan 109

LINDEN
114.8 LIN
Chan 95

SAN FRANCISCO
115.8 SFO
Chan 105

OAKLAND
116.8 OAK
Chan 115

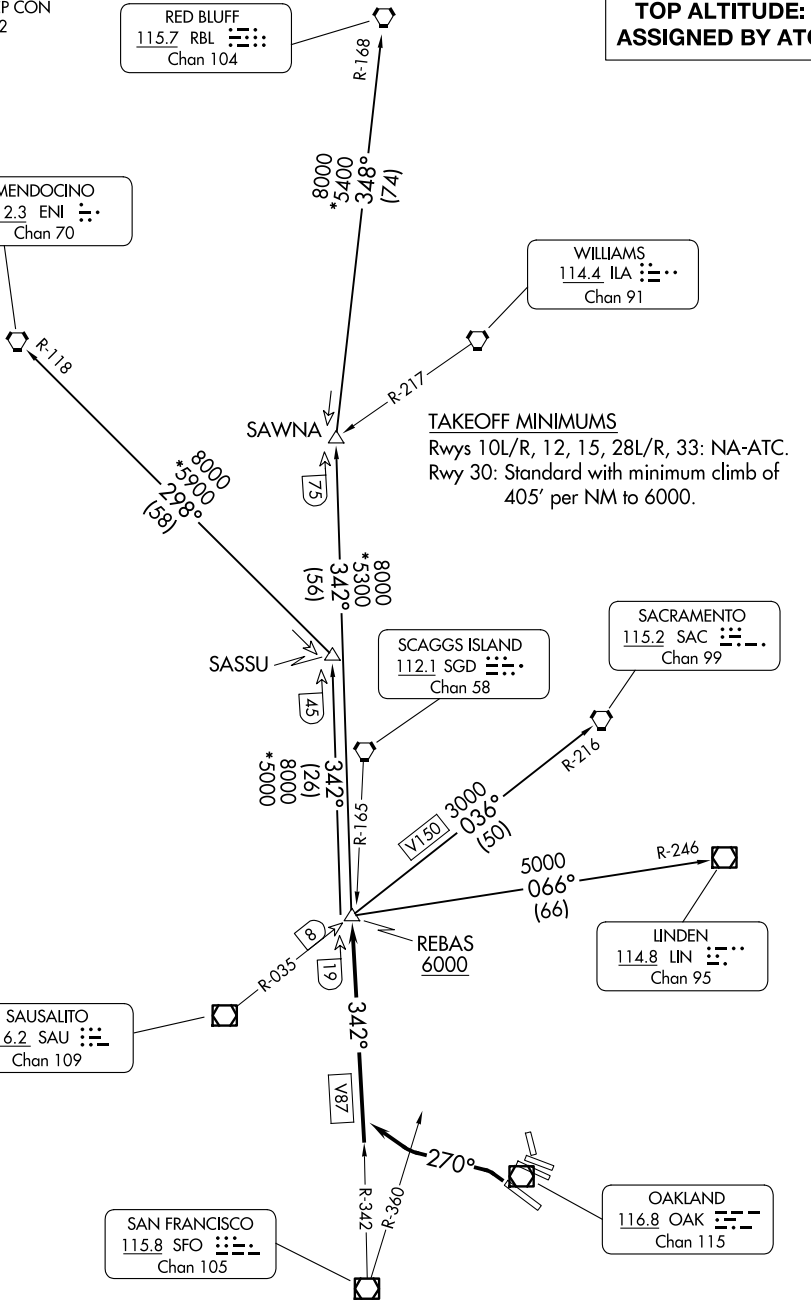
(CONTINUED ON FOLLOWING PAGE)

NOTE: Chart not to scale.

SILENT THREE DEPARTURE

SW-2, 19 MAR 2026 to 16 APR 2026

SW-2, 19 MAR 2026 to 16 APR 2026





DEPARTURE ROUTE DESCRIPTION

TAKEOFF RUNWAY 30: Climbing left turn on heading 270° to V87 (commence right turn at SFO R-360) to REBAS INT/SFO 19 DME. Cross REBAS INT at or above 6000. Thence
. (transition). Expect filed altitude 10 minutes after departure.

LINDEN TRANSITION (SLNT3.LIN): From over REBAS INT on LIN R-246 to LIN VOR/DME.

MENDOCINO TRANSITION (SLNT3.ENI): From over REBAS INT on SFO R-342 to SASSU INT, then on ENI R-118 to ENI VORTAC.

RED BLUFF TRANSITION (SLNT3.RBL): From over REBAS INT on SFO R-342 to SAWNA INT, then on RBL R-168 to RBL VORTAC.

SACRAMENTO TRANSITION (SLNT3.SAC): From over REBAS INT on SAC R-216 to SAC VORTAC.

SW-2, 19 MAR 2026 to 16 APR 2026

SW-2, 19 MAR 2026 to 16 APR 2026