

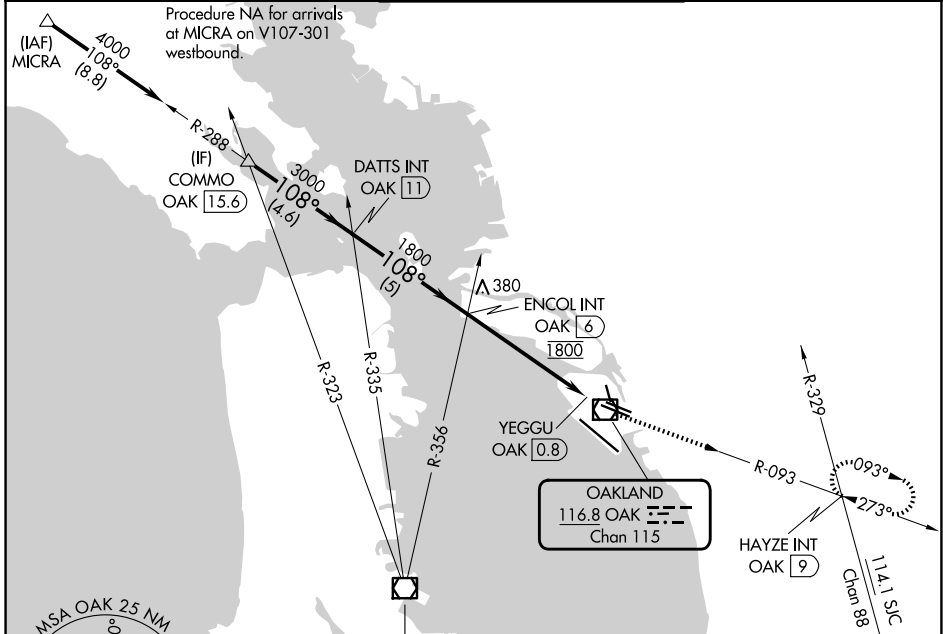
VOR/DME OAK <b>116.8</b> Chan <b>115</b>	APP CRS <b>108°</b>	Rwy Ldg <b>6213</b> TDZE <b>9</b> Apt Elev <b>9</b>
--	------------------------	---

# VOR RWY 10R

OAKLAND SAN FRANCISCO BAY (OAK)

<b>▼</b> <b>▲</b> Helicopter visibility reduction below 3/4 SM NA.	MISSED APPROACH: Climb to 5300 on OAK VOR/DME R-093 to HAYZE INT/OAK 9 DME and hold, continue climb-in-hold to 5300.
--	--

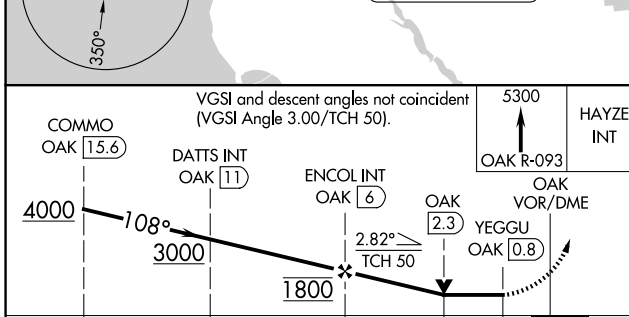
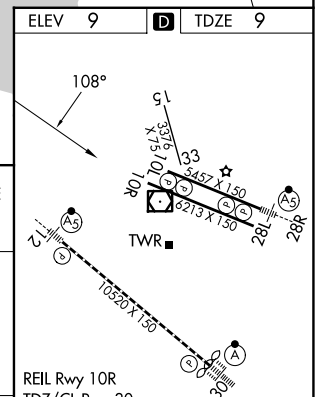
D-ATIS <b>133.775</b>	NORCAL APP CON <b>125.35 263.15</b>	OAKLAND TOWER <b>118.3 291.65</b> (10L/R-28L/R, 15-33) <b>127.2 256.9</b> (12-30)	GND CON <b>121.9</b> (10L/R-28L/R, 15-33) <b>121.75</b> (12-30)
--------------------------	--	---	---



SW-2, 19 MAR 2026 to 16 APR 2026

SW-2, 19 MAR 2026 to 16 APR 2026

ELEV <b>9</b>	<b>D</b> TDZE <b>9</b>
---------------	------------------------



CATEGORY	A	B	C	D		
S-10R	740-1 731 (800-1)		740-2 731 (800-2)			
CIRCLING	740-1 731 (800-1)		740-2 731 (800-2)	1380-3 1371 (1400-3)		
FAF to MAP 5.2 NM						
	Knots	60	90	120	150	180
	Min:Sec	5:12	3:28	2:36	2:05	1:44