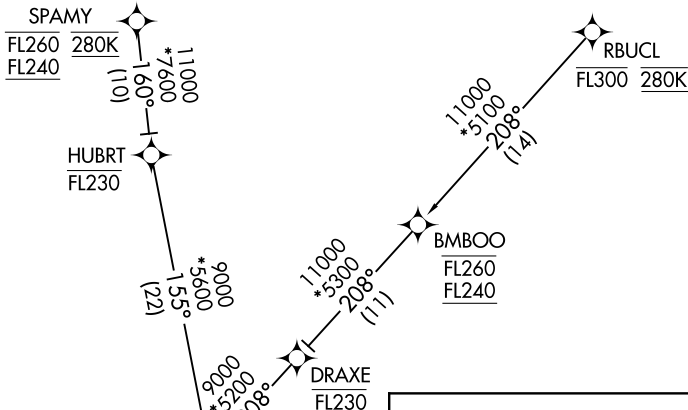


OAKLAND CENTER
125.85 323.0
NORCAL APP CON
120.9 323.2
D-ATIS
133.775
OAKLAND TOWER
127.2 256.9 (Rwy 30)
118.3 291.65 (Rwys 28L/R)
GND CON
121.75 (Rwy 30)
121.9 (Rwys 28L/R)



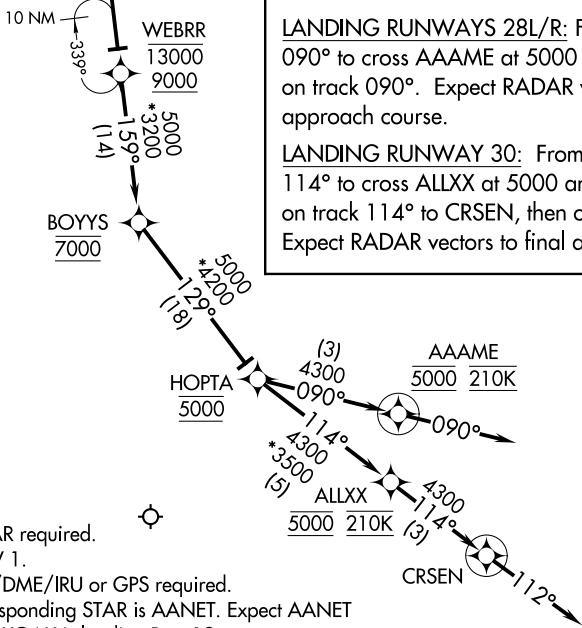
ARRIVAL ROUTE DESCRIPTION

RBUCL TRANSITION (RBUC.LWNDSR2)
SPAMY TRANSITION (SPAMY.WNDSR2)

From WNDSR on track 159° to cross WEBRR between 9000 and 13000, then on track 159° to cross BOYYS at 7000, then on track 129° to cross HOPTA at 5000.

LANDING RUNWAYS 28L/R: From HOPTA on track 090° to cross AAAME at 5000 and at 210K, then on track 090°. Expect RADAR vectors to final approach course.

LANDING RUNWAY 30: From HOPTA on track 114° to cross ALLXX at 5000 and at 210K, then on track 114° to CRSEN, then on track 112°.
Expect RADAR vectors to final approach course.



NOTE: RADAR required.
NOTE: RNAV 1.
NOTE: DME/DME/IRU or GPS required.
NOTE: Corresponding STAR is AANET. Expect AANET when KOAK is landing Rwy 12.

NOTE: Chart not to scale.

SW-2, 19 MAR 2026 to 16 APR 2026

SW-2, 19 MAR 2026 to 16 APR 2026