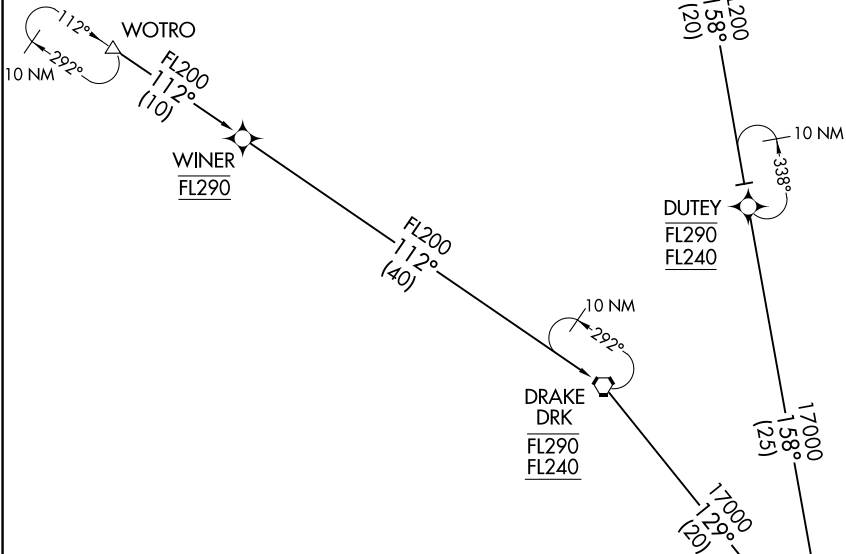


BRUSR ONE ARRIVAL (RNAV) Transition Routes

PHOENIX APP CON
 128.65 353.9
 PHOENIX TOWER
 118.7 278.8 (Rwy 8-26)
 120.9 254.3 (Rwy 7L-25R, 7R-25L)
 GND CON
 119.75 269.2 (North)
 132.55 269.2 (South)
 D-ATIS
 127.575

- NOTE: RADAR required.
- NOTE: RNAV 1.
- NOTE: DME/DME/IRU or GPS required.
- NOTE: Turbojet aircraft only.
- NOTE: All Transitions: For non-GPS equipped aircraft landing east:
TFD, BXK, and IWA DMEs must be operational.
- NOTE: TENTS Transition: For non-GPS equipped aircraft landing west:
PXR and IWA DMEs must be operational.



(CONTINUED ON FOLLOWING PAGE)

NOTE: Chart not to scale.

TENTS TRANSITION (TENTS.BRUSR1)
 WOTRO TRANSITION (WOTRO.BRUSR1)

MAIER
 FL250 270K
 FL190
 See following page
 for Arrival Routes.

BRUSR ONE ARRIVAL (RNAV) Transition Routes

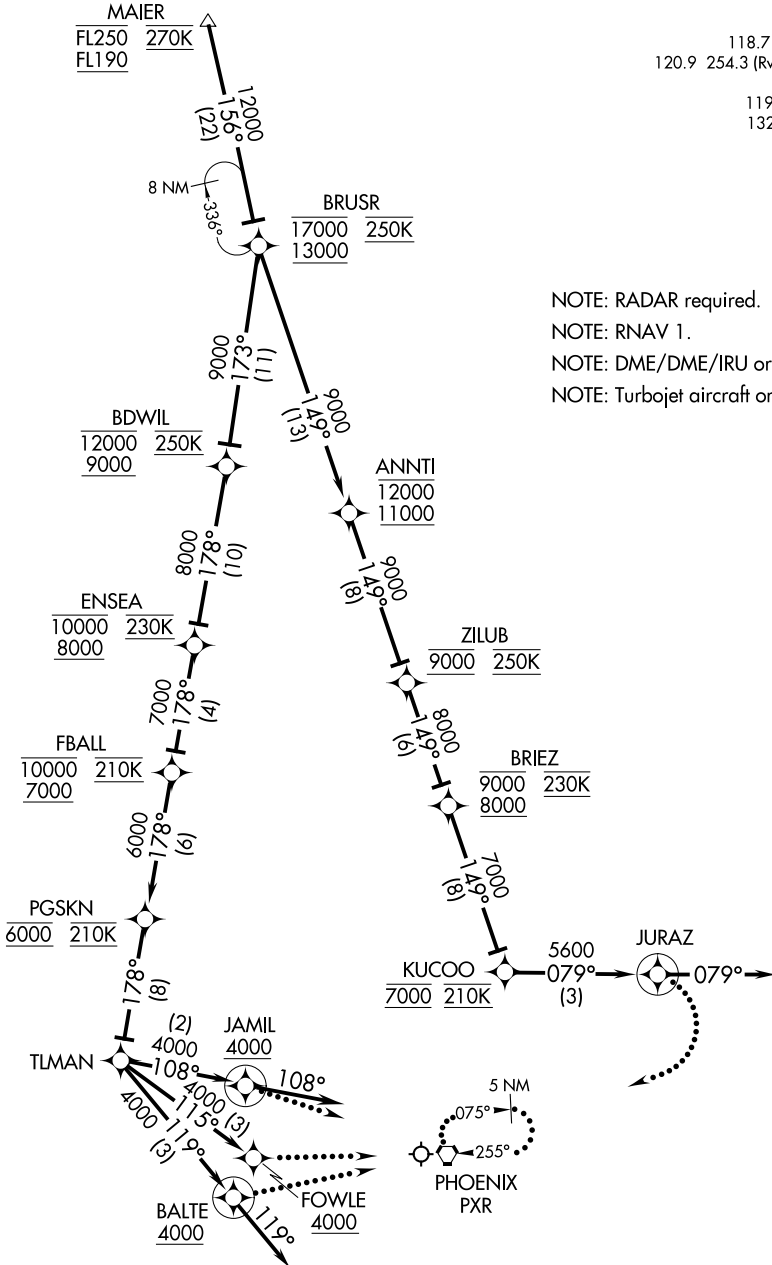
SW-4, 19 MAR 2026 to 16 APR 2026

SW-4, 19 MAR 2026 to 16 APR 2026

BRUSR ONE ARRIVAL (RNAV) Arrival Routes

PHOENIX APP CON
128.65 353.9
PHOENIX TOWER
118.7 278.8 (Rwy 8-26)
120.9 254.3 (Rwy 7L-25R, 7R-25L)
GND CON
119.75 269.2 (North)
132.55 269.2 (South)
D-ATIS
127.575

NOTE: RADAR required.
NOTE: RNAV 1.
NOTE: DME/DME/IRU or GPS required.
NOTE: Turbojet aircraft only.



NOTE: Chart not to scale.

(NARRATIVE ON FOLLOWING PAGE)

SW-4, 19 MAR 2026 to 16 APR 2026

SW-4, 19 MAR 2026 to 16 APR 2026

ARRIVAL ROUTE DESCRIPTION

From MAIER on track 156° to cross BRUSR at/above 13000 and at/below 17000 and at 250K.

LANDING RUNWAY 7L: From BRUSR on track 173° to cross BDWIL at/above 9000 and at/below 12000 and at 250K, then on track 178° to cross ENSEA at/above 8000 and at/below 10000 and at 230K, then on track 178° to cross FBALL at/above 7000 and at/below 10000 at 210K, then on track 178° to cross PGSKN at 6000 and at 210K, then on track 178° to TLMAN, then on track 115° to cross FOWLE at/above 4000. Expect ILS RWY 7L or RADAR vectors to final approach course.

LANDING RUNWAY 7R: From BRUSR on track 173° to cross BDWIL at/above 9000 and at/below 12000 and at 250K, then on track 178° to cross ENSEA at/above 8000 and at/below 10000 and at 230K, then on track 178° to cross FBALL at/above 7000 and at/below 10000 at 210K, then on track 178° to cross PGSKN at 6000 and at 210K, then on track 178° to TLMAN, then on track 119° to cross BALTE at or above 4000. Then on track 119°. Expect RADAR vectors to final approach course.

LANDING RUNWAY 8: From BRUSR on track 173° to cross BDWIL at/above 9000 and at/below 12000 and at 250K, then on track 178° to cross ENSEA at/above 8000 and at/below 10000 and at 230K, then on track 178° to cross FBALL at/above 7000 and at/below 10000 at 210K, then on track 178° to cross PGSKN at 6000 and at 210K, then on track 178° to TLMAN, then on track 108° to cross JAMIL at or above 4000. Then on track 108°. Expect RADAR vectors to final approach course.

LANDING RUNWAYS 25L, 25R, 26: From BRUSR on track 149° to cross ANNTI at/above 11000 and at/below 12000, then on track 149° to cross ZILUB at 9000 and at 250K, then on track 149° to cross BRIEZ at/above 8000 and at/below 9000 and at 230K, then on track 149° to cross KUCOO at 7000 and at 210K, then on track 079° to JURAZ, then on track 079°. Expect RADAR vectors to final approach course.

LOST COMMUNICATIONS

LANDING RUNWAY 7L: At FOWLE, intercept and execute RWY 7L ILS approach. If unable, proceed direct PXR VORTAC and hold, maintain 9000.

LANDING RUNWAY 7R: At BALTE, intercept and execute RWY 7R ILS approach. If unable, proceed direct PXR VORTAC and hold, maintain 9000.

LANDING RUNWAY 8: At JAMIL, intercept and execute RWY 8 ILS approach, If unable, proceed direct PXR VORTAC and hold, maintain 9000.

LANDING RUNWAYS 25L, 25R, 26: At JURAZ, turn right, intercept and execute RWY 25L ILS approach. If unable, proceed direct PXR VORTAC and hold, maintain 9000.