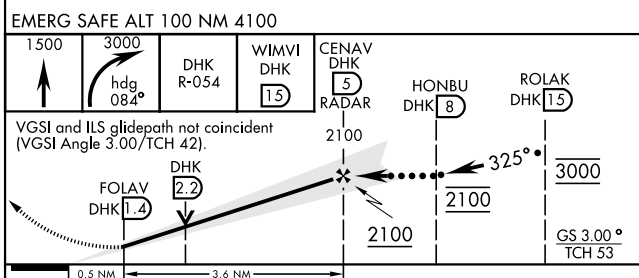
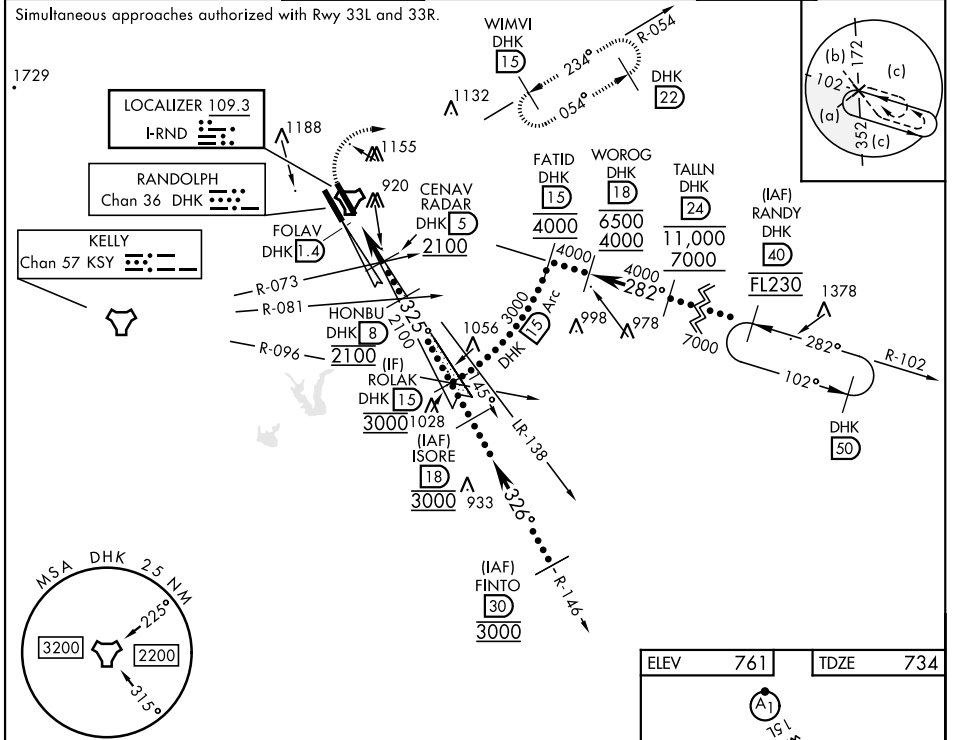


# HI-ILS or LOC Z RWY 33R

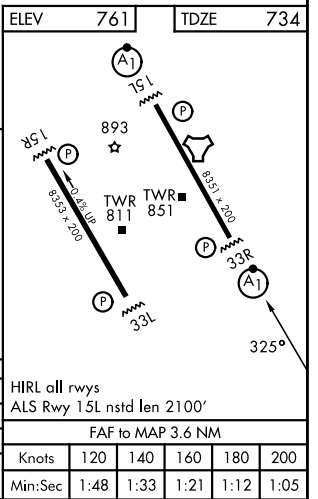
LOC I-RND <b>109.3</b>	APCH CRS <b>325°</b>	Rwy ldg TDZE Arprt Elev <b>8351</b> <b>734</b> <b>761</b>	[USAF]	RANDOLPH AFB (KRND)
---------------------------	-------------------------	--	--------	---------------------

RADAR or DME required		ALSF-1 	MISSED APPROACH: Climb to 1500, then climbing right turn heading 084° to 3000, intercept DHK R-054 to WIMVI and hold.
* When ALS inop, increase RVR to 40, vis to 3/4 mile. ** When ALS inop, increase vis to 1 1/8 miles. *** Circling not authorized SW of Rwy 15L-33R.			

ATIS ★ <b>290.525</b>	SAN ANTONIO APP CON <b>128.05 318.1</b>	TOWER ★ <b>128.25 294.7</b>	GND CON <b>119.65 275.8</b>	HANGOVER ATIS ★ <b>327.8</b>	HANGOVER TOWER ★ <b>120.5 291.1</b>	HANGOVER GND CON <b>124.75 353.75</b>
--------------------------	--	--------------------------------	--------------------------------	---------------------------------	--	--



CATEGORY	C	D	E
S-ILS 33R*	933/24	200	(200-1/2)
S-LOC 33R**	1180/45	447	(500-7/8)
CIRCLING***	1260-1 1/2 499 (500-1 1/2)	1900-3	1139 (1200-3)



# HI-ILS or LOC Z RWY 33R

SC-3, 19 MAR 2026 to 16 APR 2026

SC-3, 19 MAR 2026 to 16 APR 2026