

HI-TACAN A

TACAN DHK Chan 36	APCH CRS 144°	Rwy ldg TDZE Arpt Elev N/A N/A 761
-----------------------------	-------------------------	--

[USAF]

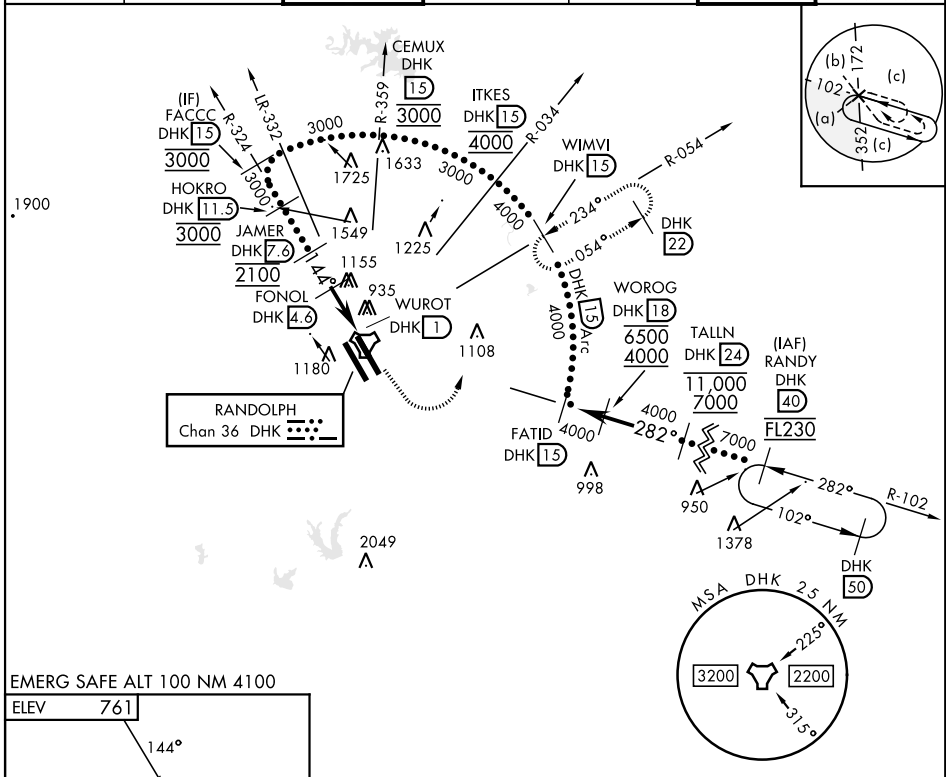
RANDOLPH AFB (KRND)

RADAR required for missed approach monitoring

* Circling not authorized SW of Rwy 15L-33R.

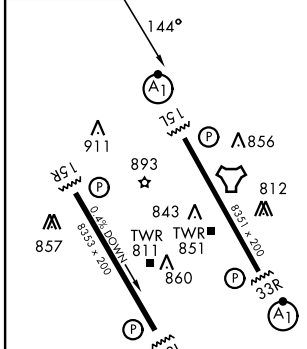
MISSED APPROACH: Track heading 145° to 1500. Then climbing left turn heading 024° to 3000. Intercept DHK TACAN R-054 to WIMVI and hold.

ATIS ★ 290.525	SAN ANTONIO APP CON 128.05 318.1	TOWER ★ 128.25 294.7	GND CON 119.65 275.8	HANGOVER ATIS ★ 327.8	HANGOVER TOWER ★ 120.5 291.1	HANGOVER GND CON 124.75 353.75
--------------------------	---	--------------------------------	--------------------------------	------------------------------------	---	---

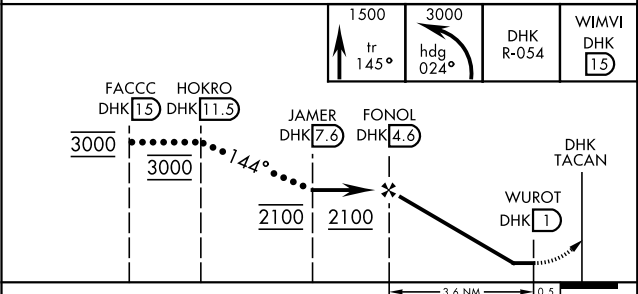


EMERG SAFE ALT 100 NM 4100

ELEV **761**



HIRL all rwys
ALS Rwy 15L nstd len 2100'



CATEGORY	C	D	E
CIRCLING *	1320-1½ 559 (600-1½)	1900-3	1139 (1200-3)

HI-TACAN A

SC-3, 19 MAR 2026 to 16 APR 2026

SC-3, 19 MAR 2026 to 16 APR 2026