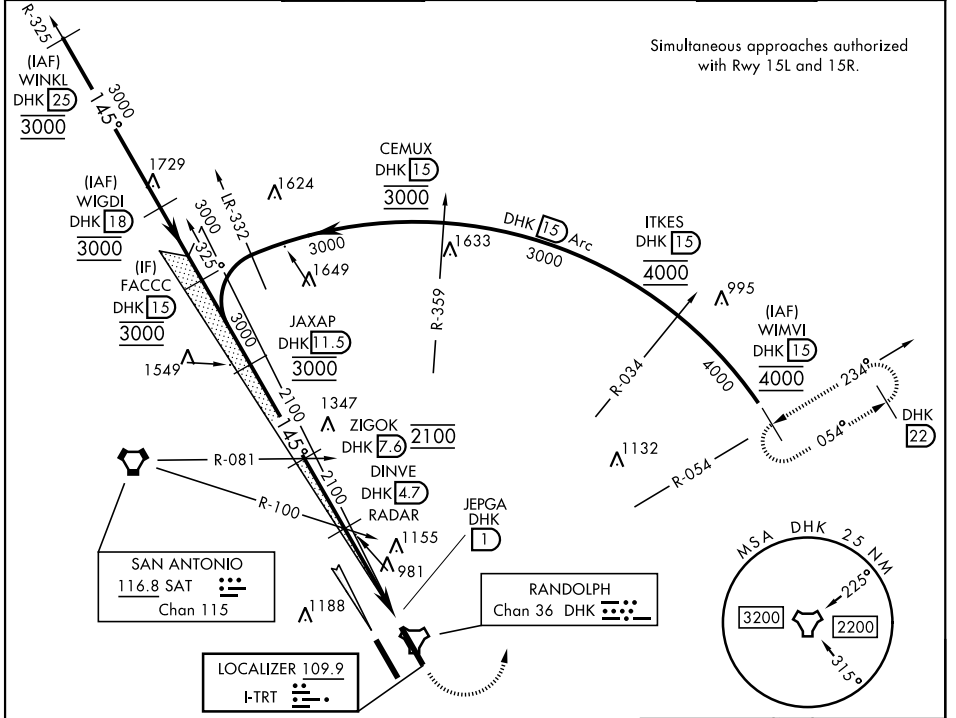


ILS or LOC Y RWY 15L

LOC I-TRT 109.9	APCH CRS 145°	Rwy Idg TDZE Arpt Elev 8351 742 761	[USAF]	RANDOLPH AFB (KRND)		
---------------------------	-------------------------	---	--------	---------------------	--	--

RADAR or DME required		ALSIF-1 		MISSED APPROACH: Climb to 1500, then climbing left turn heading 024° to 3000. Intercept DHK TACAN R-054 to WIMVI and hold.		
* When ALS inop, increase CAT AB RVR to 55, vis to 1 mile; CAT CDE to 1 1/2 miles.						
** Circling not authorized SW of Rwy 15L-33R.						
ATIS ★ 290.525	SAN ANTONIO APP CON 128.05 318.1	TOWER ★ 128.25 294.7	GND CON 119.65 275.8	HANGOVER ATIS ★ 327.8	HANGOVER TOWER ★ 120.5 291.1	HANGOVER GND CON 124.75 353.75



Simultaneous approaches authorized with Rwy 15L and 15R.

SC-3, 19 MAR 2026 to 16 APR 2026

SC-3, 19 MAR 2026 to 16 APR 2026

EMERG SAFE ALT 100 NM 4100					ELEV 761	TDZE 742
FACCC DHK 15, JAXAP DHK 11.5, ZIGOK DHK 7.3, DINVE DHK 4.7, JEPGA DHK 2, WIMVI DHK 15 VGS1 and ILS glidepath not coincident (VGS1 Angle 3.00/TCH 46). hdg 024° GS 3.00° TCH 41 3.7 NM, 0.5 NM						
CATEGORY	A	B	C	D	E	
S-ILS 15L		942/40	200	(200-34)		
S-LOC 15L *	1260/40	518 (500-34)	1260-1 1/4	518 (500-1 1/4)		
CIRCLING **	1260-1	499 (500-1)	1260-1 1/2 499 (500-1 1/2)	1900-3	1139 (1200-3)	
HIRL all rwys ALS Rwy 15L nstd len 2100'						
FAF to MAP 3.7 NM						
Knots	60	90	120	150	180	
Min:Sec	3:42	2:28	1:51	1:29	1:14	

ILS or LOC Y RWY 15L