

ILS or LOC Y RWY 33R

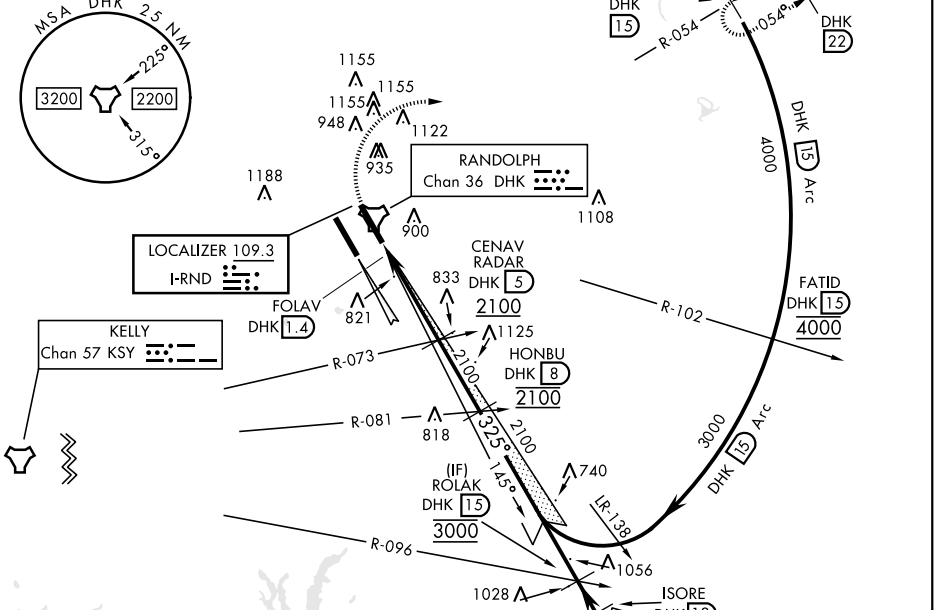
LOC I-RND 109.3	APCH CRS 325°	Rwy ldg TDZE Arprt Elev 8351 734 761	[USAF]	RANDOLPH AFB (KRND)
---------------------------	-------------------------	--	--------	---------------------

RADAR or DME required		ALS-1 A1	MISSED APPROACH: Climb to 1500, then climbing right turn hdg 084° to 3000. Intercept DHK R-054 to WIMVI and hold.
* When ALS inop, increase RVR to 40 and vis to ¼ mile. ** When ALS inop, increase CAT AB RVR to 55, vis to 1 mile; CAT CDE vis to 1½ miles. *** Circling not authorized SW of Rwy 15L-33R.			

ATIS ★ 290.525	SAN ANTONIO APP CON 128.05 318.1	TOWER ★ 128.25 294.7	GND CON 119.65 275.8	HANGOVER ATIS ★ 327.8	HANGOVER TOWER ★ 120.5 291.1	HANGOVER GND CON 124.75 353.75
--------------------------	--	--------------------------------	--------------------------------	---------------------------------	--	--

Simultaneous approaches authorized with Rwy 33R and 33L.

1394



EMERG SAFE ALT 100 NM 4100

ELEV 761	TDZE 734										
		1500	3000	DHK R-054	WIMVI DHK 15	CENAV DHK 5	HONBU DHK 8	ROLAK DHK 15			
		VGSI and ILS glidepath not coincident (VGSI Angle 3.00/TCH 42). GP 3.00° TCH 53									
HIRL all rwys ALS Rwy 15L nstd len 2100' 821' FAF to MAP 3.6 NM		CATEGORY A B C D E									
		S-ILS 33R *		933/24		200		(200-½)			
		S-LOC 33R **		1180/24 447 (500-½)		1180/45 447 (500-¾)					
		CIRCLING ***		1240-1 479 (500-1)		1260-1½ 499 (500-1½)		1900-3 1139 (1200-3)			
Knots: 60 90 120 150 180 Min:Sec: 3:36 2:24 1:48 1:26 1:12											

ILS or LOC Y RWY 33R

SC-3, 19 MAR 2026 to 16 APR 2026

SC-3, 19 MAR 2026 to 16 APR 2026