

UNIVERSAL CITY, TEXAS

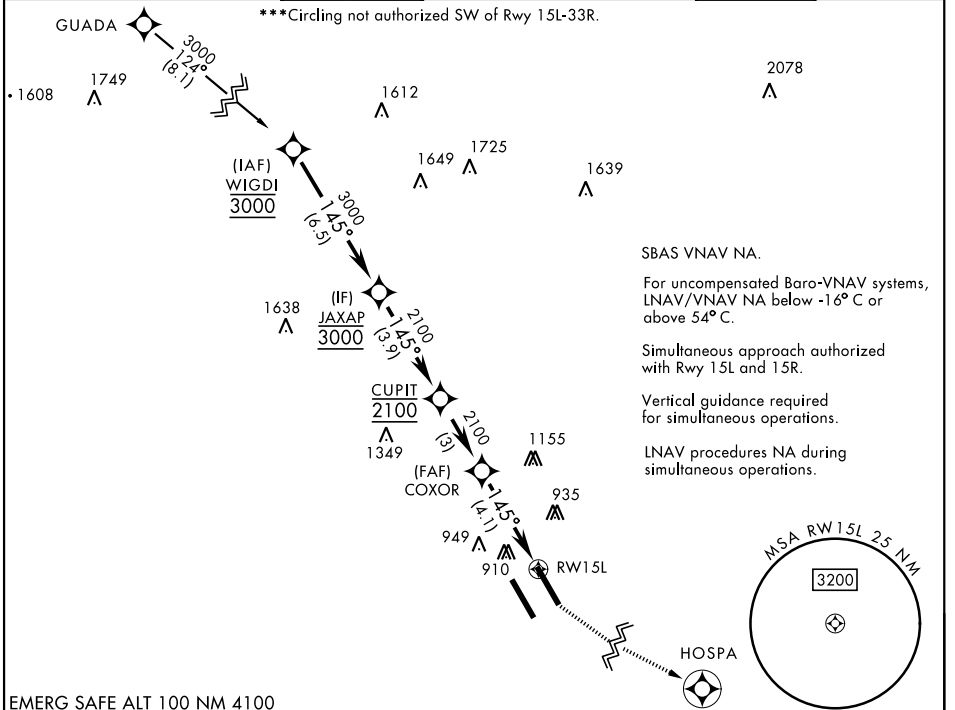
# RNAV (GPS) RWY 15L

APCH CRS <b>145°</b>	Rwy Idg TDZE Arpt Elev <b>8351</b> <b>742</b> <b>761</b>
-------------------------	---

[USAF]

RANDOLPH AFB (KRND)

RNP APCH - GPS		ALSF-1 		MISSED APPROACH: Climb to 1500, then climbing left turn to 3000 direct HOSPA. Expect ATC instructions.		
*When ALS inop, increase CAT ABC RVR to 45, vis to 7/8 mile, CAT DE RVR to 50, vis to 1 mile. **When ALS inop, increase CAT AB RVR to 55, vis to 1 mile; CAT CDE vis to 1 1/8 miles.						
ATIS ★ <b>290.525</b>	SAN ANTONIO APP CON <b>128.05 318.1</b>	TOWER ★ <b>128.25 294.7</b>	GND CON <b>119.65 275.8</b>	HANGOVER ATIS ★ <b>327.8</b>	HANGOVER TOWER ★ <b>120.5 291.1</b>	HANGOVER GND CON <b>124.75 353.75</b>



EMERG SAFE ALT 100 NM 4100

WIGDI		JAXAP		CUPIT		COXOR		RW15L		HOSPA	
3000		3000		2100		2100		1500		3000	
GP 3.00° TCH 46		145°		145°		1.5 NM to RW15L		4.1 NM		ELEV 761 TDZE 742	
CATEGORY	A	B	C	D	E						
LNAV/VNAV DA *	1043/40 301 (300-3/4)	1054/40 312 (300-3/4)	1062/40 320 (400-3/4)	1073/40 331 (400-3/4)							
LNAV MDA **	1260/40 518 (500-3/4)		1260-1 1/4 518 (500-1 1/4)								
CIRCLING ***	1260-1	499 (500-1)	1260-1 1/2 499 (500-1 1/2)		1900-3	1139 (1200-3)		HIRL all rwys ALS Rwy 15L nstd len 2100'			

UNIVERSAL CITY, TEXAS  
Amdt 4 20FEB25

29°32'N-98°17'W

RANDOLPH AFB (KRND)

# RNAV (GPS) RWY 15L

SC-3, 19 MAR 2026 to 16 APR 2026

SC-3, 19 MAR 2026 to 16 APR 2026