

RNAV (GPS) RWY 33R

APCH CRS 325°	Rwy Idg TDZE Arprt Elev	8351 734 761
-------------------------	-------------------------------	---

[USAF]

RANDOLPH AFB (KRND)

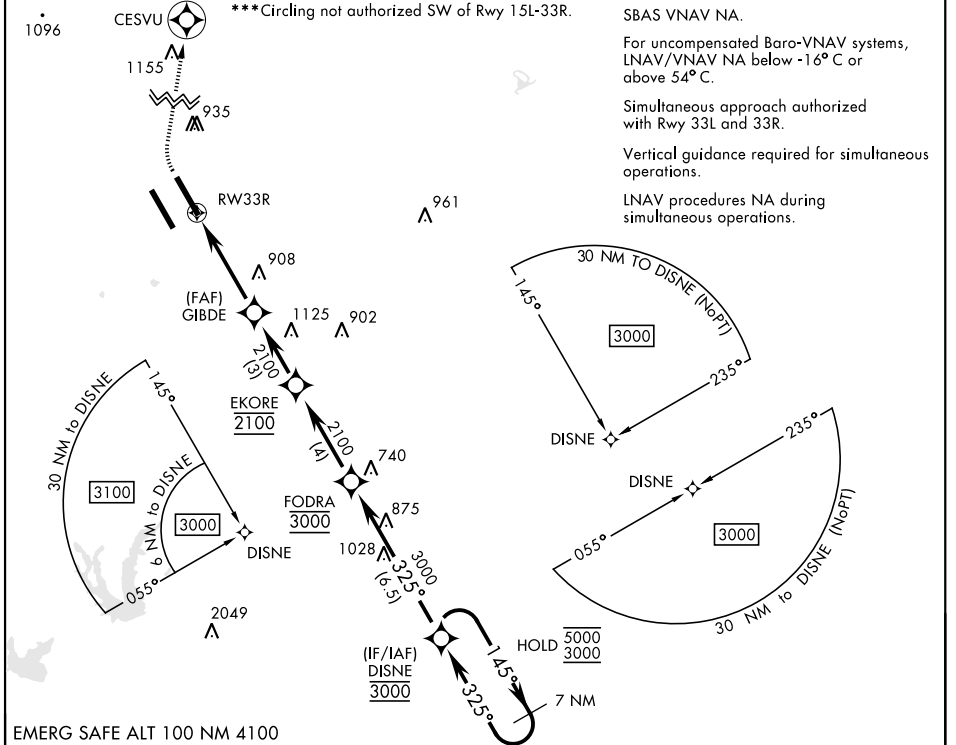
RNP APCH - GPS

*When ALS inop, increase CAT ABCD RVR to 40, vis to 3/8 mile;
CAT E RVR to 45, vis to 7/8 mile.
** When ALS inop, increase CAT AB RVR to 55 and vis to 1 mile;
CAT CDE vis to 1 3/8 miles.

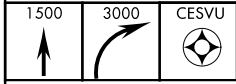


MISSED APPROACH: Climb to 1500 then climbing right turn to 3000 direct CESVU. Expect ATC instructions.

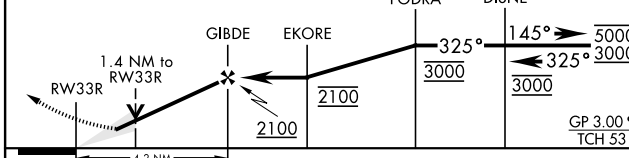
ATIS ★ 290.525	SAN ANTONIO APP CON 128.05 318.1	TOWER ★ 128.25 294.7	GND CON 119.65 275.8	HANGOVER ATIS ★ 327.8	HANGOVER TOWER ★ 120.5 291.1	HANGOVER GND CON 124.75 353.75
--------------------------	--	--------------------------------	--------------------------------	---------------------------------	--	--



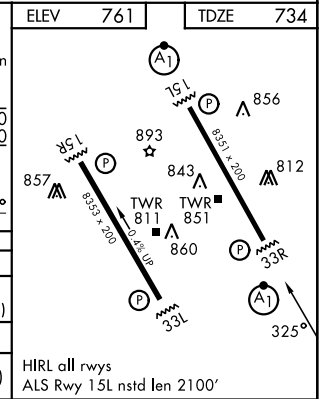
EMERG SAFE ALT 100 NM 4100



VGSI and RNAV glidepath not coincident (VGSI Angle 3.00/TCH 42).



CATEGORY	A	B	C	D	E
LNAV/VNAV DA *	983/24 250 (300-1/2)			987/24 254 (300-1/2)	1025/24 292 (300-1/2)
LNAV MDA **	1200/24 467 (500-1/2)		1200/50	467	(500-1)
CIRCLING ***	1240-1 479 (500-1)		1260-1 1/2 499 (500-1 1/2)	1900-3	1139 (1200-3)



RNAV (GPS) RWY 33R

SC-3, 19 MAR 2026 to 16 APR 2026

SC-3, 19 MAR 2026 to 16 APR 2026