

# TACAN RWY 15R

VORTAC RND <b>112.3</b> Chan <b>70</b>	APCH CRS <b>146°</b>	Rwy Idg TDZE Arpt Elev <b>8353</b> <b>761</b> <b>761</b>
--	-------------------------	---

[USAF]

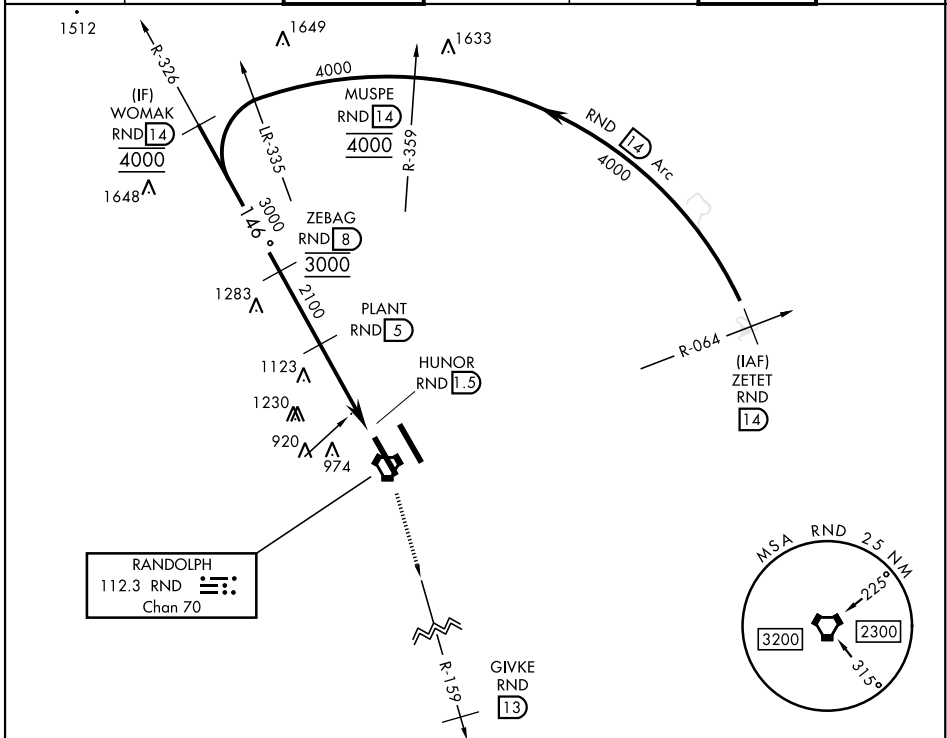
RANDOLPH AFB (KRND)

RADAR required

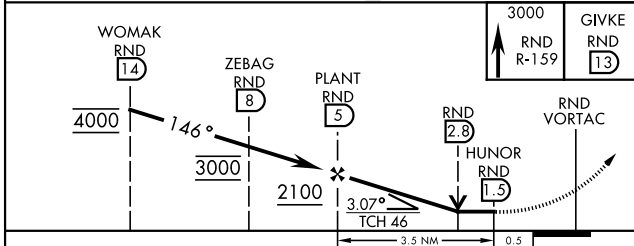
MISSED APPROACH: Climb to 3000 out RND VORTAC R-159 to 13 DME (GIVKE). Expect ATC instructions.

\*Circling not authorized NE of Rwy 15R-33L.

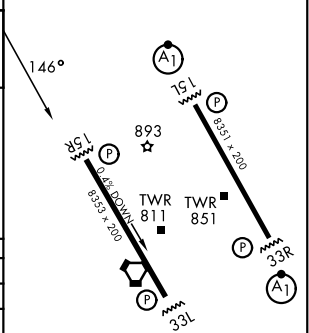
ATIS ★ <b>290.525</b>	SAN ANTONIO APP CON <b>128.05 318.1</b>	TOWER ★ <b>128.25 294.7</b>	GND CON <b>119.65 275.8</b>	HANGOVER ATIS ★ <b>327.8</b>	HANGOVER TOWER ★ <b>120.5 291.1</b>	HANGOVER GND CON <b>124.75 353.75</b>
--------------------------	--	--------------------------------	--------------------------------	---------------------------------	--	--



EMERG SAFE ALT 100 NM 4100



ELEV 761	TDZE 761
----------	----------



CATEGORY	A	B	C	D	E
S-15R	1380/55 619 (700-1)		1380-1 619 (700-1)		
CIRCLING*	1380-1 619 (700-1)		1500-2 739 (800-2)	2000-3 1239 (1300-3)	

HIRL all rwys  
ALS Rwy 15L nstd len 2100'

# TACAN RWY 15R

SC-3, 19 MAR 2026 to 16 APR 2026

SC-3, 19 MAR 2026 to 16 APR 2026