

YODUH TWO DEPARTURE (RNAV)

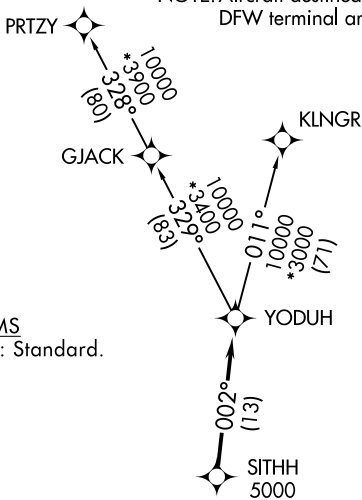
SAN ANTONIO DEP CON
 127.1 290.225
 ATIS ★
 290.525
 ATIS (HANGOVER) ★
 327.8
 CLNC DEL (15L-33R)
 338.35
 GND CON
 119.65 275.8
 GND CON (HANGOVER)
 124.75 353.75
 TOWER ★
 128.25 294.7
 HANGOVER TOWER ★
 120.5 291.1

RNAV 1 - DME/DME IRU or GPS.

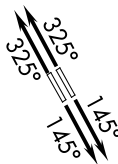
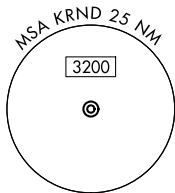
RADAR required for non-GPS equipped aircraft.
RADAR required.

**TOP ALTITUDE:
ASSIGNED BY ATC**

NOTE: Aircraft destined for airports north/northeast of DFW terminal area must file the KLNGR Transition.



TAKEOFF MINIMUMS
Rwys 15L/R, 33L/R: Standard.



NOTE: Chart not to scale.

DEPARTURE ROUTE DESCRIPTION

TAKEOFF RUNWAYS 15L/R: Climb on heading 145° or as assigned by ATC, for vectors to SITHH, thence. . .

TAKEOFF RUNWAYS 33L/R: Climb on heading 325° or as assigned by ATC, for vectors to SITHH, thence. . .

. . . on track 002° to YODUH, then on transition. Maintain ATC assigned altitude. Expect filed altitude 10 minutes after departure.

KLNGR TRANSITION (YODUH2.KLNGR)
PRTZY TRANSITION (YODUH2.PRTZY)