

TARVR TWO ARRIVAL (RNAV) (TARVR.TARVR2) 19MAR26

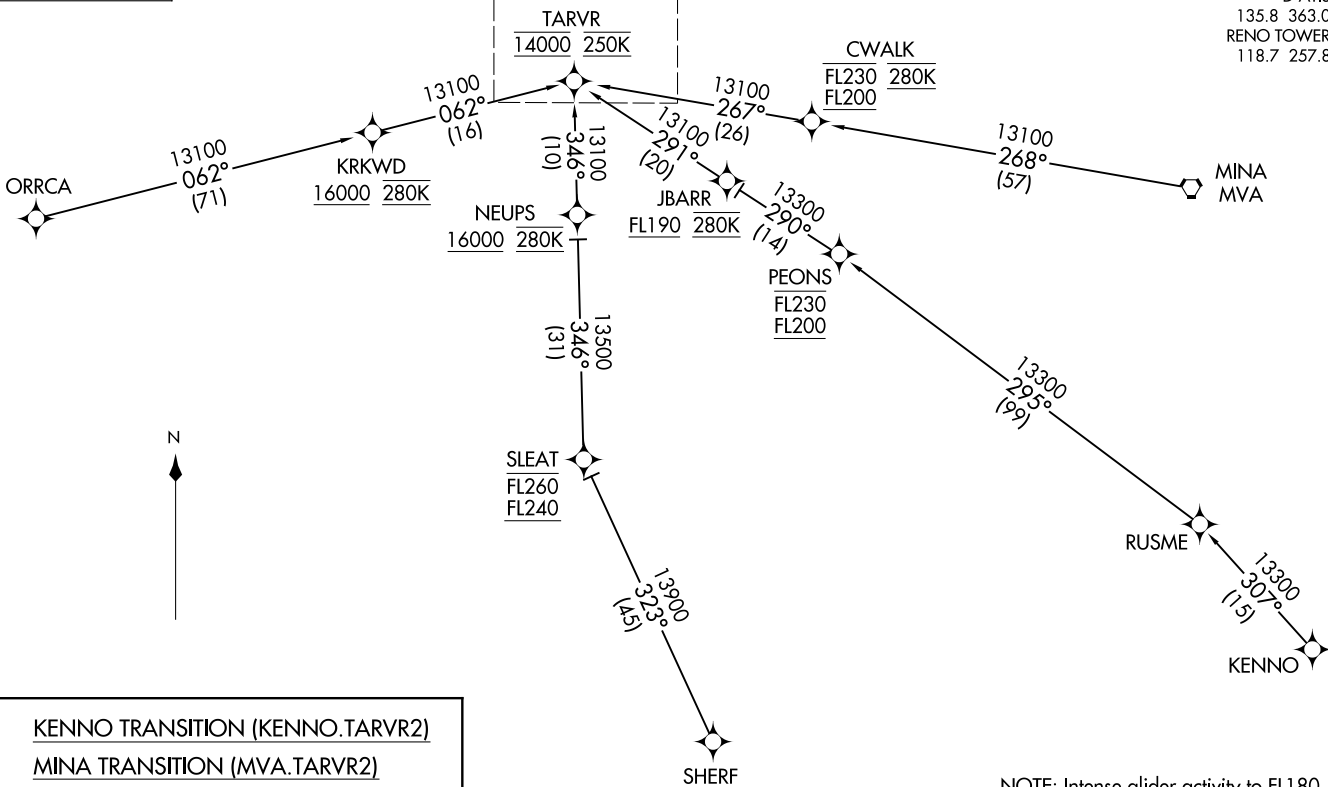
TARVR TWO ARRIVAL (RNAV) Transition Routes

RENO, NEVADA RENO/TAHOE INTL (RNT0)

RNAV 1 - GPS.
RADAR required.

See following page for arrival routes

NORCAL APP CON
119.2 279.55
D-ATIS
135.8 363.0
RENO TOWER
118.7 257.8



KENNO TRANSITION (KENNO.TARVR2)
MINA TRANSITION (MVA.TARVR2)
ORRCA TRANSITION (ORRCA.TARVR2)
SHERF TRANSITION (SHERF.TARVR2)

(CONTINUED ON FOLLOWING PAGE)

NOTE: Intense glider activity to FL180.

NOTE: GPS required.

NOTE: Chart not to scale.

(TARVR.TARVR2) 26078

TARVR TWO ARRIVAL (RNAV) Transition Routes

RENO, NEVADA RENO/TAHOE INTL (RNT0)

AL-346 (FAA)

(TARVR.TARVR2) 26078

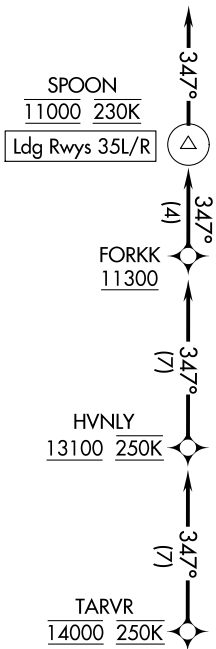
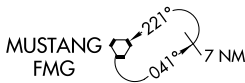
TARVR TWO ARRIVAL (RNAV)

AL-346 (FAA)
Arrival Routes

RENO/TAHOE INTL (RNO)
RENO, NEVADA

NORCAL APP CON
119.2 279.55
D-ATIS
135.8 363.0
RENO TOWER
118.7 257.8

RNAV 1 - GPS.
RADAR required.



NOTE: Intense glider activity to FL180.

NOTE: GPS required.

NOTE: Chart not to scale.

ARRIVAL ROUTE DESCRIPTION

From TARVR on track 347° to cross HVNLY at or above 13100 and at 250K.

LANDING RUNWAYS 35L/R: From HVNLY on track 347° to cross FORKK at or above 11300, then on track 347° to cross SPOON at 11000 and at 230K, then on track 347°. Expect assigned instrument approach for Rws 35L/R or RADAR vectors to final approach course.

TARVR TWO ARRIVAL (RNAV) Arrival Routes

(TARVR.TARVR2) 19MAR26

RENO, NEVADA
RENO/TAHOE INTL (RNO)

SW-4, 19 MAR 2026 to 16 APR 2026

SW-4, 19 MAR 2026 to 16 APR 2026