

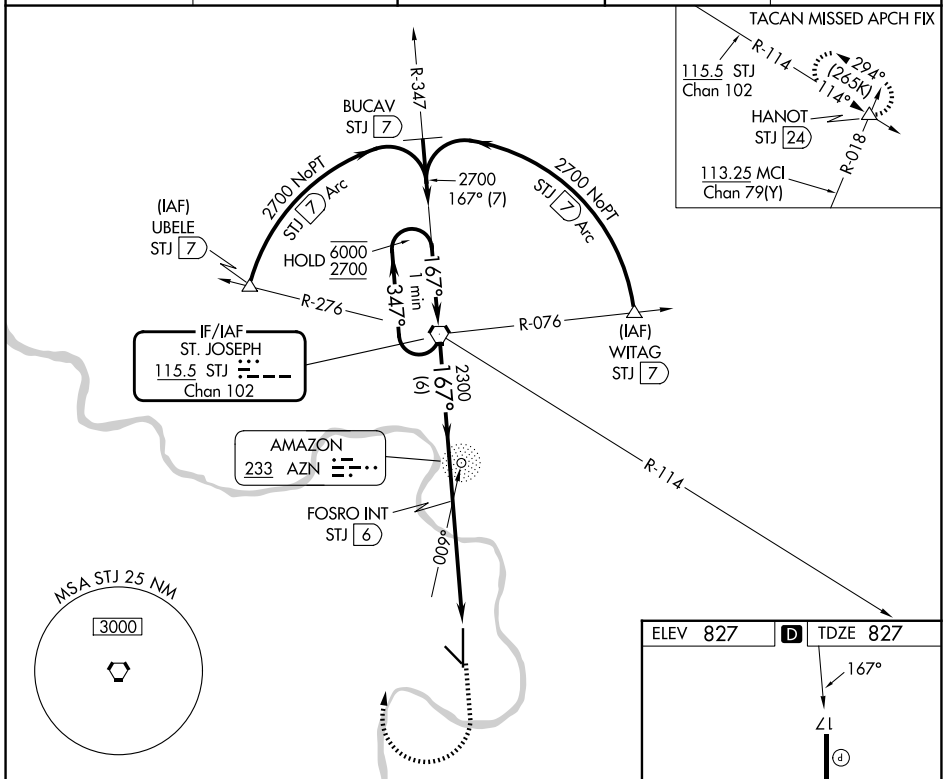
VORTAC STJ	APP CRS	Rwy Ldg	8061
115.5	167°	TDZE	827
Chan 102		Apt Elev	827

VOR or TACAN RWY 17

ROSECRANS MEML (STJ)

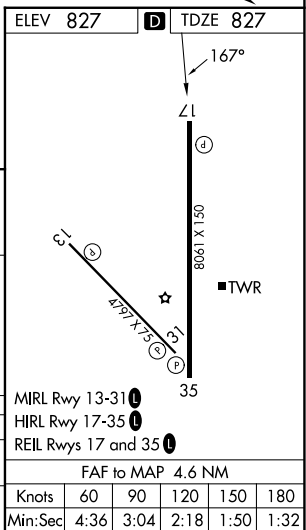
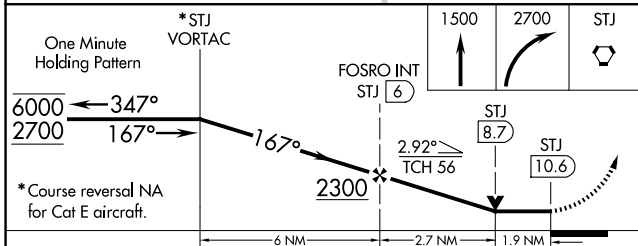
ADF or DME required.		MISSED APPROACH: Climb to 1500 then climbing right turn to 2700 direct STJ VORTAC and hold. (TACAN aircraft climb to 2300 then climbing left turn to 3100 direct HANOT INT/STJ 24 DME and hold NW, LT, 114° inbound, GPS required).		
<p>▽</p> <p>▲ Missed approach to STJ VORTAC NA for Cat E aircraft.</p> <p>ASR/PAR</p>				

ATIS 125.05	ST. JOSEPH APP CON * 120.35 360.8	ST. JOSEPH TOWER * 126.9 (CTAF) 239.0	GND CON 121.9	UNICOM 122.95
-----------------------	---	---	-------------------------	-------------------------



NC-3, 19 MAR 2026 to 16 APR 2026

NC-3, 19 MAR 2026 to 16 APR 2026



CATEGORY	A	B	C	D	E
S-17	1500-1	673 (700-1)	1500-1 $\frac{7}{8}$ 673 (700-1 $\frac{7}{8}$)		
CIRCLING	1500-1	673 (700-1)	1620-2 $\frac{1}{4}$ 793 (800-2 $\frac{1}{4}$)	1640-2 $\frac{3}{4}$ 813 (900-2 $\frac{3}{4}$)	1760-3 933 (1000-3)

MIRL Rwy 13-31	1
HIRL Rwy 17-35	1
REIL Rwys 17 and 35	1
FAF to MAP 4.6 NM	
Knots	60 90 120 150 180
Min:Sec	4:36 3:04 2:18 1:50 1:32