

(CHUUC6.CHUUC) 22139

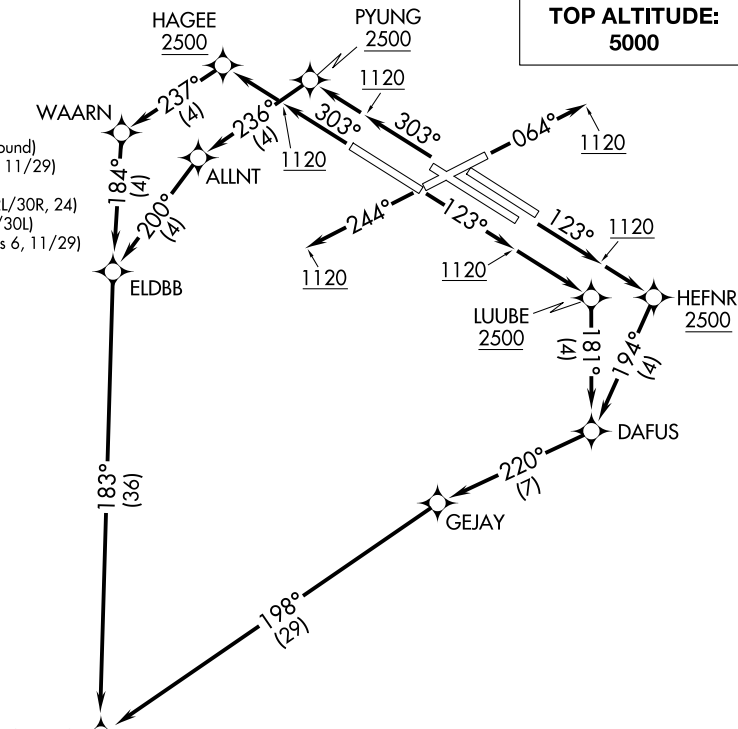
# CHUUC SIX DEPARTURE (RNAV)

AL-360 (FAA)

ST LOUIS LAMBERT INTL (STL)  
ST. LOUIS, MISSOURI

D-ATIS  
125.025 379.925  
CLNC DEL  
119.5 363.1  
CPDLC  
GND CON  
121.9 348.6 (Inbound)  
121.65 377.175 (Outbound)  
118.925 227.125 (Rwy 11/29)  
ST. LOUIS TOWER  
120.05 284.6 (Rwys 12L/30R, 24)  
118.5 257.7 (Rwy 12R/30L)  
132.475 239.275 (Rwys 6, 11/29)  
ST. LOUIS DEP CON  
128.1 307.05

**TOP ALTITUDE:  
5000**



NOTE: RNAV 1.  
NOTE: DME/DME/IRU or GPS required.  
NOTE: RADAR required.  
NOTE: For use by turbojet aircraft only.

### TAKEOFF MINIMUMS

- Rwy 6: Standard with minimum climb of 500' per NM to 1120 then minimum climb of 240' per NM to 5000.
- Rwy 24: Standard with minimum climb of 500' per NM to 1120 then minimum climb of 260' per NM to 5000.
- Rwy 11: Standard with minimum climb of 500' per NM to LUUBE.
- Rwys 12L/R: Standard with minimum climb of 500' per NM to HEFNR.
- Rwy 29: Standard with minimum climb of 500' per NM to HAGEE.
- Rwys 30L/R: Standard with minimum climb of 500' per NM to PYUNG.

(NARRATIVE ON FOLLOWING PAGE)

NOTE: Chart not to scale.

# CHUUC SIX DEPARTURE (RNAV)

(CHUUC6.CHUUC) 19MAY22

ST. LOUIS, MISSOURI  
ST LOUIS LAMBERT INTL (STL)

NC-3, 19 MAR 2026 to 16 APR 2026

NC-3, 19 MAR 2026 to 16 APR 2026



DEPARTURE ROUTE DESCRIPTION

TAKEOFF RUNWAY 6: Climb heading 064° to 1120, then as assigned by ATC, expect RADAR vectors to CHUUC. Thence. . . .

TAKEOFF RUNWAY 24: Climb heading 244° to 1120, then as assigned by ATC, expect RADAR vectors to CHUUC. Thence. . . .

TAKEOFF RUNWAY 11: Climb heading 123° to 1120, then direct LUUBE, cross LUUBE at or above 2500, then on depicted route to CHUUC. Thence. . . .

TAKEOFF RUNWAYS 12L/R: Climb heading 123° to 1120, then direct HEFNR, cross HEFNR at or above 2500, then on depicted route to CHUUC. Thence. . . .

TAKEOFF RUNWAY 29: Climb heading 303° to 1120, then direct HAGEE, cross HAGEE at or above 2500, then on depicted route to CHUUC. Thence. . . .

TAKEOFF RUNWAYS 30L/R: Climb heading 303° to 1120, then direct PYUNG, cross PYUNG at or above 2500, then on depicted route to CHUUC. Thence. . . .

. . . . (transition). Maintain 5000, expect filed altitude 10 minutes after departure.

MYERZ TRANSITION (CHUUC6.MYERZ)

WALNUT RIDGE TRANSITION (CHUUC6.ARG)

NC-3, 19 MAR 2026 to 16 APR 2026

NC-3, 19 MAR 2026 to 16 APR 2026