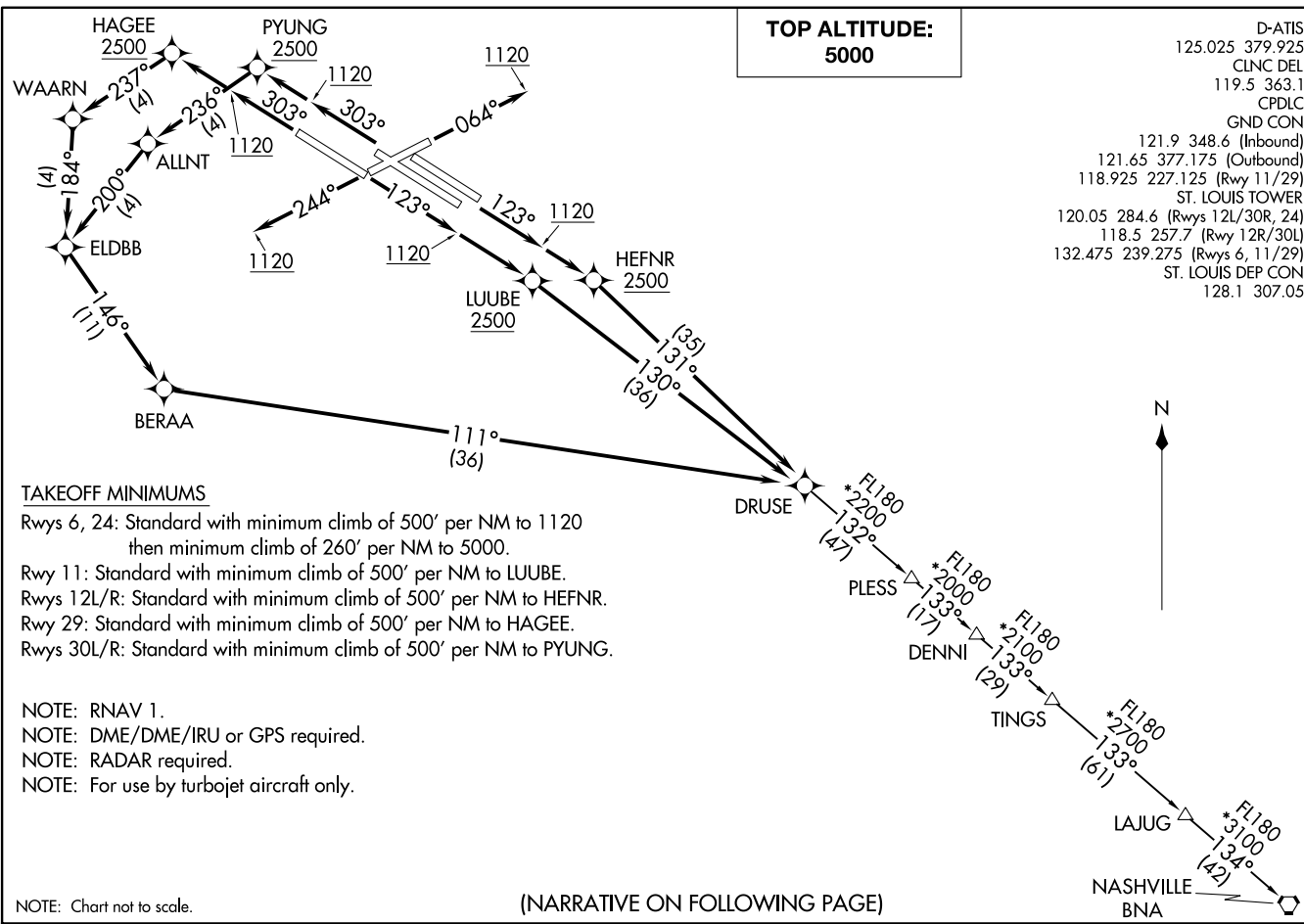


DRUSE FIVE DEPARTURE (RNAV)  
(DRUSE5.DRUSE) 19JUL18

ST LOUIS MISSOURI  
ST LOUIS LAMBERT INTL (STL)



(DRUSE5.DRUSE) 18312  
DRUSE FIVE DEPARTURE (RNAV)

AL-360 (FAA)

ST LOUIS LAMBERT INTL (STL)  
ST LOUIS MISSOURI



DEPARTURE ROUTE DESCRIPTION

TAKEOFF RUNWAY 6: Climb heading 064° to 1120, then as assigned by ATC, expect RADAR vectors to DRUSE. Thence. . . .

TAKEOFF RUNWAY 24: Climb heading 244° to 1120, then as assigned by ATC, expect RADAR vectors to DRUSE. Thence. . . .

TAKEOFF RUNWAY 11: Climb heading 123° to 1120, then direct LUUBE, cross LUUBE at or above 2500, then on depicted route to DRUSE. Thence. . . .

TAKEOFF RUNWAYS 12L/R: Climb heading 123° to 1120, then direct HEFNR, cross HEFNR at or above 2500, then on depicted route to DRUSE. Thence. . . .

TAKEOFF RUNWAY 29: Climb heading 303° to 1120, then direct HAGEE, cross HAGEE at or above 2500, then on depicted route to DRUSE. Thence. . . .

TAKEOFF RUNWAYS 30L/R: Climb heading 303° to 1120, then direct PYUNG, cross PYUNG at or above 2500, then on depicted route to DRUSE. Thence. . . .

. . . . (transition). Maintain 5000, expect filed altitude 10 minutes after departure.

DENNI TRANSITION (DRUSE5.DENNI)

NASHVILLE TRANSITION (DRUSE5.BNA)

NC-3, 19 MAR 2026 to 16 APR 2026

NC-3, 19 MAR 2026 to 16 APR 2026