

**TOP ALTITUDE:
(JETS) 5000/
(PROPS) 3000**

NOTE: RADAR required.
NOTE: BRICKYARD transition, CREEP transition, and ROSEWOOD transition: DME required.

TAKEOFF MINIMUMS

Rwys 6, 12L/R, 24, 29: Standard.
Rwy 11: 200-1 or standard with minimum climb of 370' per NM to 900.
Rwy 30L: 200-1 or standard with minimum climb of 245' per NM to 800.
Rwy 30R: 200-1½ or standard with minimum climb of 230' per NM to 800.

(CONTINUED ON FOLLOWING PAGE)

NOTE: Chart not to scale.

GATEWAY ONE DEPARTURE
(GATWY1.TWILA) 08NOV18

ST. LOUIS, MISSOURI
ST. LOUIS LAMBERT INTL (STL)

D-ATIS
125.025 379.925
CLNC DEL
119.5 363.1
CPDLC
GND CON
121.9 348.6 (Inbound)
121.65 377.175 (Outbound)
118.925 227.125 (Rwy 11/29)
ST. LOUIS TOWER
120.05 284.6 (Rwys 12L/30R, 24)
118.5 257.7 (Rwy 12R/30L)
132.475 239.275 (Rwys 6, 11/29)
ST. LOUIS DEP CON
119.15 335.5

ST. LOUIS
117.4 STL :::::
Chan 121

BIBLE GROVE
109.0 BIB :::::
Chan 27

TERRE HAUTE
115.3 TTH :::::
Chan 100

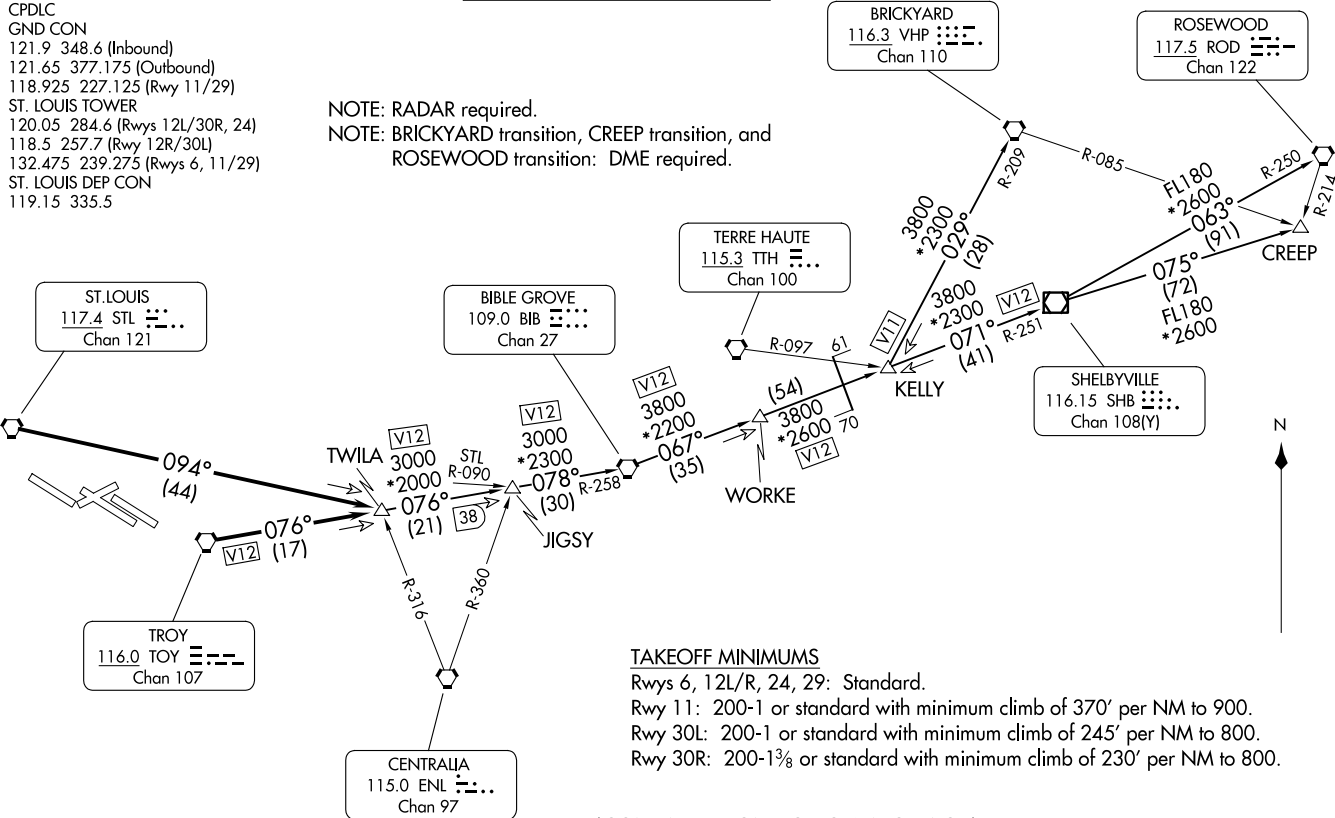
BRICKYARD
116.3 VHP :::::
Chan 110

ROSEWOOD
117.5 ROD :::::
Chan 122

SHELBYVILLE
116.15 SHB :::::
Chan 108(Y)

TROY
116.0 TOY :::::
Chan 107

CENTRALIA
115.0 ENL :::::
Chan 97



(GATWY1.TWILA) 24025
GATEWAY ONE DEPARTURE

AL-360 (FAA)

ST. LOUIS LAMBERT INTL (STL)
ST. LOUIS, MISSOURI





DEPARTURE ROUTE DESCRIPTION

Climb on assigned heading for vector to appropriate route.

JETS: Maintain 5000 or assigned altitude, thence. . . .

PROPS: Maintain 3000 or assigned altitude, thence. . . .

. . . .from over TOY VORTAC on TOY R-076 or over STL VORTAC on STL R-094 to TWILA INT. Then on (transition), expect clearance to filed altitude 10 minutes after departure.

BIBLE GROVE TRANSITION (GATWY1.BIB): From over TWILA on TOY R-076 to JIGSY, then on BIB R-258 to BIB VORTAC.

BRICKYARD TRANSITION (GATWY1.VHP): From over TWILA on TOY R-076 to JIGSY, then on BIB R-258 to BIB VORTAC, then on BIB R-067 to WORKE, then on BIB R-067 and SHB R-251 to KELLY, then on VHP R-209 to VHP VORTAC.

CREEP TRANSITION (GATWY1.CREEP): From over TWILA on TOY R-076 to JIGSY, then on BIB R-258 to BIB VORTAC, then on BIB R-067 to WORKE, then on BIB R-067 and SHB R-251 to KELLY, then on SHB R-251 to SHB VOR/DME, then on SHB R-075 to CREEP.

JIGSY TRANSITION (GATWY1.JIGSY): From over TWILA on TOY R-076 to JIGSY.

ROSEWOOD TRANSITION (GATWY1.ROD): From over TWILA on TOY R-076 to JIGSY, then on BIB R-258 to BIB VORTAC, then on BIB R-067 to WORKE, then on BIB R-067 and SHB R-251 to KELLY, then on SHB R-251 to SHB VOR/DME, then on SHB R-063 and ROD R-250 to ROD VORTAC.

NC-3, 19 MAR 2026 to 16 APR 2026

NC-3, 19 MAR 2026 to 16 APR 2026