

JAHNY SIX DEPARTURE (RNAV)  
(JAHNY6 JAHNY) 12AUG21

(JAHNY6 JAHNY) 21224  
JAHNY SIX DEPARTURE (RNAV)

D-ATIS  
125.025 379.925  
CLINC DEL  
119.5 363.1  
CPDLC  
GND CON  
121.9 348.6 (Inbound)  
121.65 377.175 (Outbound)  
118.925 227.125 (Rwy 11/29)  
ST. LOUIS TOWER  
120.05 284.6 (Rwys 12L/30R, 24)  
118.5 257.7 (Rwy 12R/30L)  
132.475 239.275 (Rwys 6, 11/29)  
ST. LOUIS DEP CON  
128.1 307.05

**TOP ALTITUDE:  
5000**

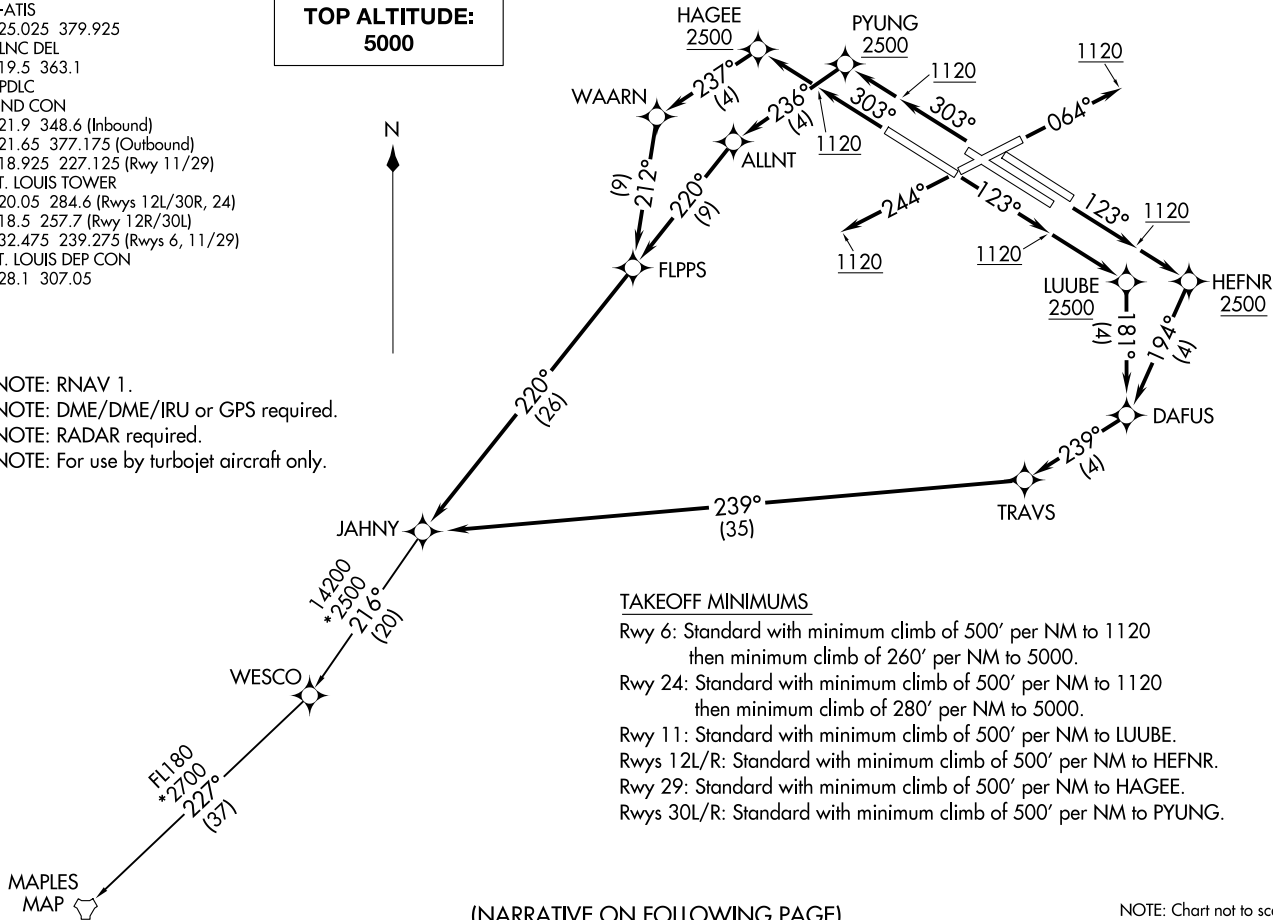


NOTE: RNAV 1.  
NOTE: DME/DME/IRU or GPS required.  
NOTE: RADAR required.  
NOTE: For use by turbojet aircraft only.

ST. LOUIS, MISSOURI  
ST. LOUIS LAMBERT INTL (STL)

AL-360 (FAA)

ST. LOUIS LAMBERT INTL (STL)  
ST. LOUIS, MISSOURI



TAKEOFF MINIMUMS

Rwy 6: Standard with minimum climb of 500' per NM to 1120 then minimum climb of 260' per NM to 5000.  
 Rwy 24: Standard with minimum climb of 500' per NM to 1120 then minimum climb of 280' per NM to 5000.  
 Rwy 11: Standard with minimum climb of 500' per NM to LUUBE.  
 Rwys 12L/R: Standard with minimum climb of 500' per NM to HEFNR.  
 Rwy 29: Standard with minimum climb of 500' per NM to HAGEE.  
 Rwys 30L/R: Standard with minimum climb of 500' per NM to PYUNG.

(NARRATIVE ON FOLLOWING PAGE)

NOTE: Chart not to scale.



DEPARTURE ROUTE DESCRIPTION

TAKEOFF RUNWAY 6: Climb on heading 064° to 1120, then as assigned by ATC, expect RADAR vectors to JAHNY. Thence. . . .

TAKEOFF RUNWAY 24: Climb on heading 244° to 1120, then as assigned by ATC, expect RADAR vectors to JAHNY. Thence. . . .

TAKEOFF RUNWAY 11: Climb on heading 123° to 1120, then direct LUUBE, cross LUUBE at or above 2500, then on depicted route to JAHNY. Thence. . . .

TAKEOFF RUNWAYS 12L/R: Climb on heading 123° to 1120, then direct HEFNR, cross HEFNR at or above 2500, then on depicted route to JAHNY. Thence. . . .

TAKEOFF RUNWAY 29: Climb on heading 303° to 1120, then direct HAGEE, cross HAGEE at or above 2500, then on depicted route to JAHNY. Thence. . . .

TAKEOFF RUNWAYS 30L/R: Climb on heading 303° to 1120, then direct PYUNG, cross PYUNG at or above 2500, then on depicted route to JAHNY. Thence. . . .

. . . . Maintain 5000, expect filed altitude 10 minutes after departure.

MAPLES TRANSITION (JAHNY6.MAP)

NC-3, 19 MAR 2026 to 16 APR 2026

NC-3, 19 MAR 2026 to 16 APR 2026