

JHART7 .JHART1 0700CTZ1

JHART SEVEN DEPARTURE (RNAV)

ST LOUIS MISSOURI
ST LOUIS LAMBERT INTL (STL)

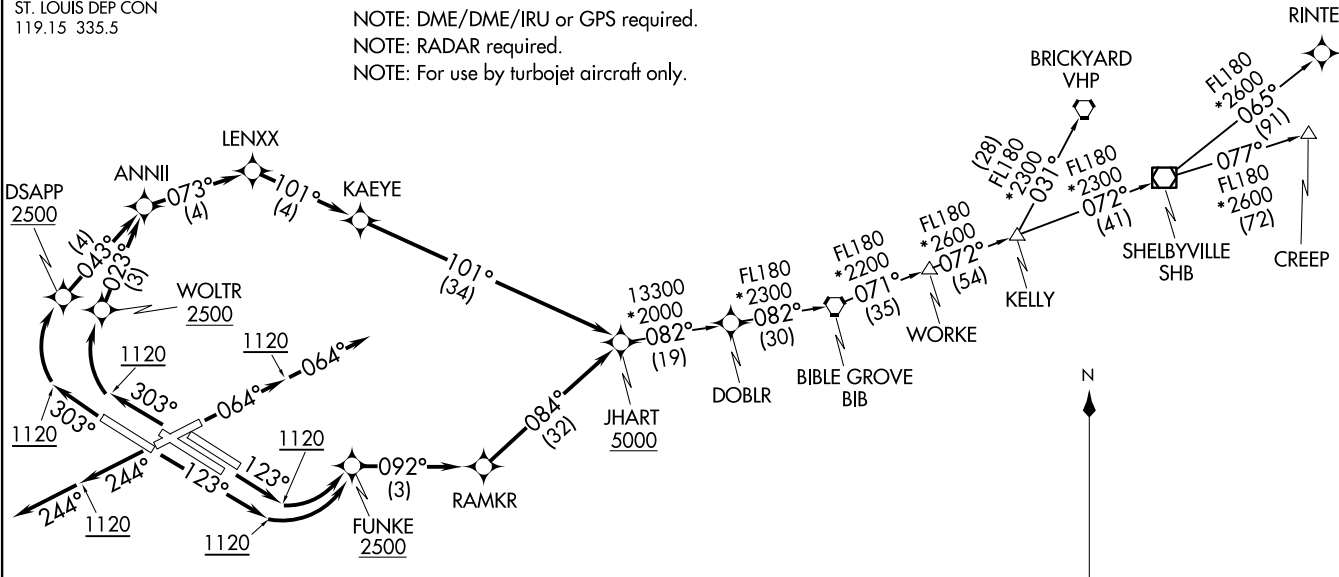
D-ATIS
125.025 379.925
CLNC DEL
119.5 363.1
CPDLC
GND CON
121.9 348.6 (Inbound)
121.65 377.175 (Outbound)
118.925 227.125 (Rwy 11/29)
ST. LOUIS TOWER
120.05 284.6 (Rwys 12L/30R, 24)
118.5 257.7 (Rwy 12R/30L)
132.475 239.275 (Rwys 6, 11/29)
ST. LOUIS DEP CON
119.15 335.5

TAKEOFF MINIMUMS

Rwy 6: Standard with minimum climb of 500' per NM to 1120.
Rwy 24: Standard with minimum climb of 500' per NM to 1120.
Rwys 11, 12L/R: Standard with minimum climb of 500' per NM to 1120.
Rwy 29: Standard with minimum climb of 500' per NM to 1120.
Rwys 30L/R: Standard with minimum climb of 500' per NM to 1120.

NOTE: RNAV 1.
NOTE: DME/DME/IRU or GPS required.
NOTE: RADAR required.
NOTE: For use by turbojet aircraft only.

TOP ALTITUDE:
5000



(NARRATIVE ON FOLLOWING PAGE)

NOTE: Chart not to scale.

JHART7 .JHART1 21280

JHART SEVEN DEPARTURE (RNAV)

AL-360 (FAA)

ST LOUIS LAMBERT INTL (STL)
ST LOUIS MISSOURI



DEPARTURE ROUTE DESCRIPTION

TAKEOFF RUNWAY 6: Climb on heading 064° to 1120, then climb on heading 064° or as assigned by ATC for vectors to cross JHART at or above 5000. Thence. . . .

TAKEOFF RUNWAY 24: Climb on heading 244° to 1120, then climb on heading 244° or as assigned by ATC for vectors to cross JHART at or above 5000. Thence. . . .

TAKEOFF RUNWAYS 11, 12L/R: Climb on heading 123° to 1120, then climbing left turn direct FUNKE, cross FUNKE at or above 2500, then on depicted route to cross JHART at or above 5000. Thence. . . .

TAKEOFF RUNWAY 29: Climb on heading 303° to 1120, then climbing right turn direct DSAPP, cross DSAPP at or above 2500, then on depicted route to cross JHART at or above 5000. Thence. . . .

TAKEOFF RUNWAYS 30L/R: Climb on heading 303° to 1120, then climbing right turn direct WOLTR, cross WOLTR at or above 2500, then on depicted route to cross JHART at or above 5000. Thence. . . .

. . . . (transition). Maintain 5000, expect filed altitude 10 minutes after departure.

BIBLE GROVE TRANSITION (JHART7.BIB)

BRICKYARD TRANSITION (JHART7.VHP)

CREEP TRANSITION (JHART7.CREEP)

DOBLR TRANSITION (JHART7.DOBLR)

KELLY TRANSITION (JHART7.KELLY)

RINTE TRANSITION (JHART7.RINTE)

NC-3, 19 MAR 2026 to 16 APR 2026

NC-3, 19 MAR 2026 to 16 APR 2026