

(ROTRY6.ROTRY) 25219

ROTRY SIX DEPARTURE (RNAV)

AL-360 (FAA)

ST LOUIS LAMBERT INTL (STL)
ST. LOUIS, MISSOURI

TOP ALTITUDE:
5000

RNAV 1 - DME/DME/IRU or GPS required.

RADAR required.

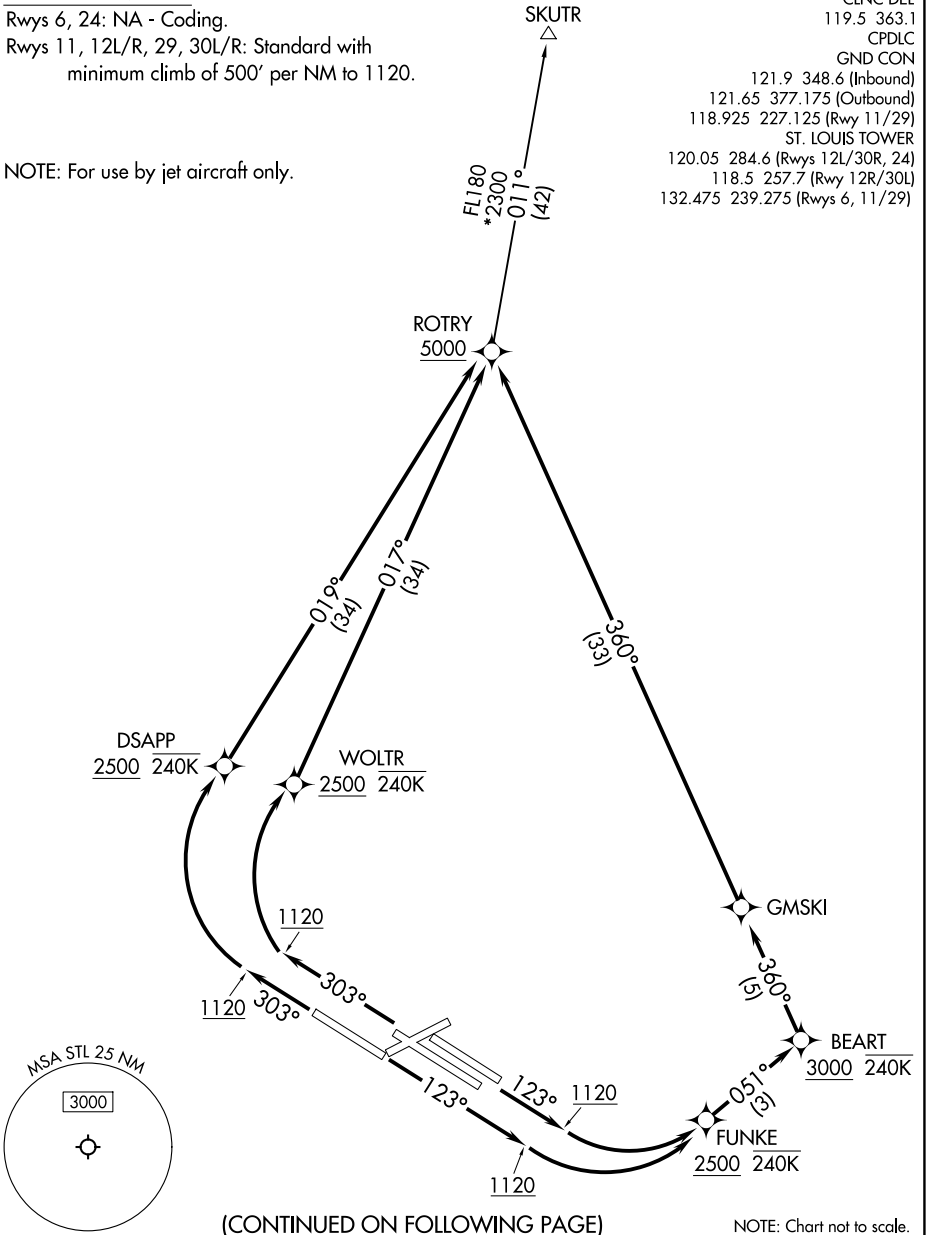
ST. LOUIS DEP CON
119.15 335.5
D-ATIS
125.025 379.925
CLNC DEL
119.5 363.1
CPDLC
GND CON
121.9 348.6 (Inbound)
121.65 377.175 (Outbound)
118.925 227.125 (Rwy 11/29)
ST. LOUIS TOWER
120.05 284.6 (Rwys 12L/30R, 24)
118.5 257.7 (Rwy 12R/30L)
132.475 239.275 (Rwys 6, 11/29)

TAKEOFF MINIMUMS

Rwys 6, 24: NA - Coding.

Rwys 11, 12L/R, 29, 30L/R: Standard with
minimum climb of 500' per NM to 1120.

NOTE: For use by jet aircraft only.



NC-3, 19 MAR 2026 to 16 APR 2026

NC-3, 19 MAR 2026 to 16 APR 2026

ROTRY SIX DEPARTURE (RNAV)

(ROTRY6.ROTRY) 07AUG25

ST. LOUIS, MISSOURI
ST LOUIS LAMBERT INTL (STL)



DEPARTURE ROUTE DESCRIPTION

TAKEOFF RUNWAYS 11, 12L/R: Climb on heading 123° to 1120, then left turn direct FUNKE, cross FUNKE at or above 2500 and at or below 240K, then on track 051° to cross BEART at or above 3000 and at or below 240K, then on depicted route to ROTRY, cross ROTRY at or above 5000, thence. . . .

TAKEOFF RUNWAY 29: Climb on heading 303° to 1120, then right turn direct DSAPP, cross DSAPP at or above 2500 and at or below 240K. Then on track 019° to ROTRY, cross ROTRY at or above 5000, thence. . . .

TAKEOFF RUNWAYS 30L/R: Climb on heading 303° to 1120, then right turn direct WOLTR, cross WOLTR at or above 2500 and at or below 240K, then on track 017° to ROTRY, cross ROTRY at or above 5000, thence. . . .

. . . . on transition. Maintain 5000, expect filed altitude 10 minutes after departure.

SKUTR TRANSITION (ROTRY6.SKUTR)

NC-3, 19 MAR 2026 to 16 APR 2026

NC-3, 19 MAR 2026 to 16 APR 2026