

RNAV (GPS) RWY 12

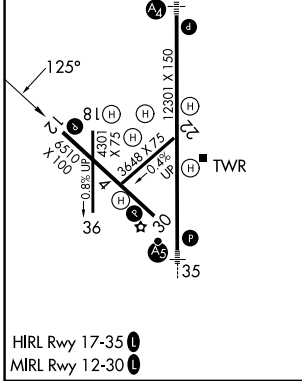
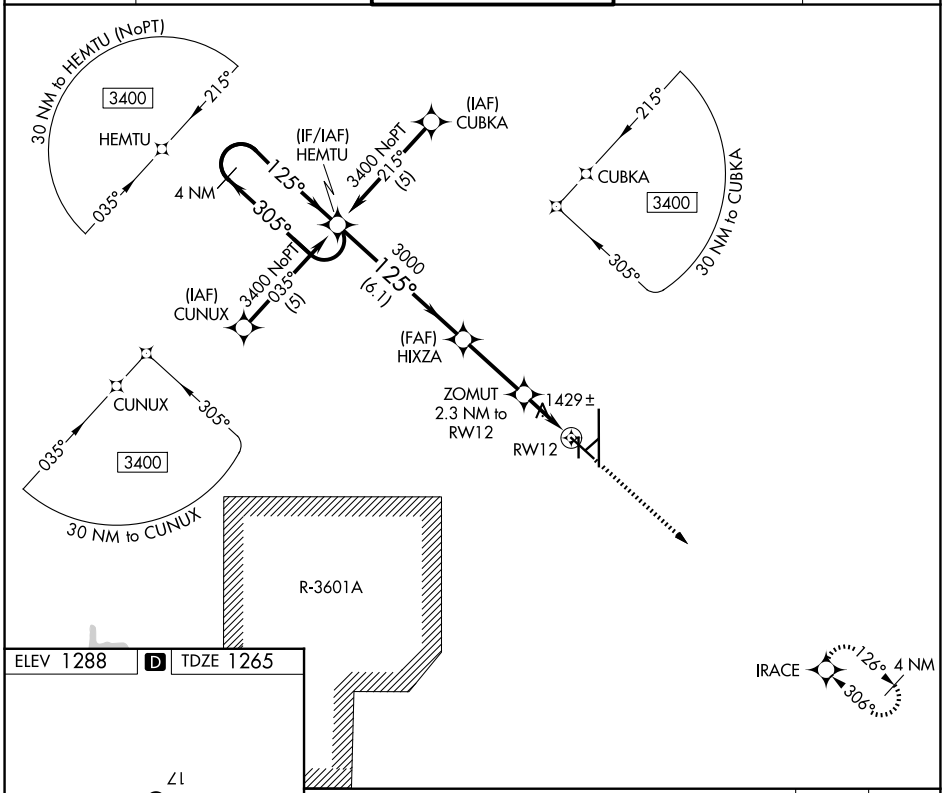
SALINA RGNL (SLN)

APP CRS 125°	Rwy Ldg TDZE Apt Elev	6510 1265 1288
------------------------	-----------------------------	---

⚠ Circling NA for Cat D southwest of runway 12-30.
⚠ DME/DME RNP-0.3 NA.

MISSED APPROACH: Climb to 3400 direct IRACE and hold.

ATIS 120.15	KANSAS CITY CENTER 134.9 363.2	SALINA TOWER * 119.3 (CTAF) 0 257.7	GND CON 121.9 360.8	UNICOM 122.95
-----------------------	--	---	-------------------------------	-------------------------



	HEMTU 4 NM Holding Pattern	HIXZA	ZOMUT 2.3 NM to RW12	IRACE
	3400 ← 305°	125° →	3000	3400 ↑
		3.04° TCH 45	2040	
			1.3 NM to RW12	
			1.3 NM	
	6.1 NM	3 NM	1 NM	1.3 NM
CATEGORY	A	B	C	D
LNAV MDA	1700-1	435 (500-1)	1700-1¼ 435 (500-1¼)	1700-1½ 435 (500-1½)
CIRCLING	1820-1 532 (600-1)	1840-1 552 (600-1)	1860-1½ 572 (600-1½)	1860-2 572 (600-2)

NC-2, 19 MAR 2026 to 16 APR 2026

NC-2, 19 MAR 2026 to 16 APR 2026