

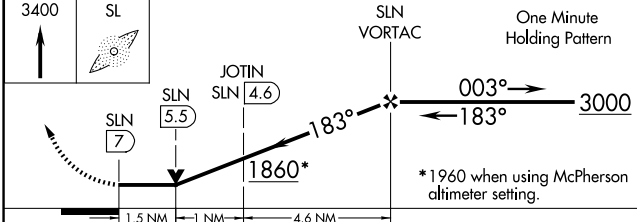
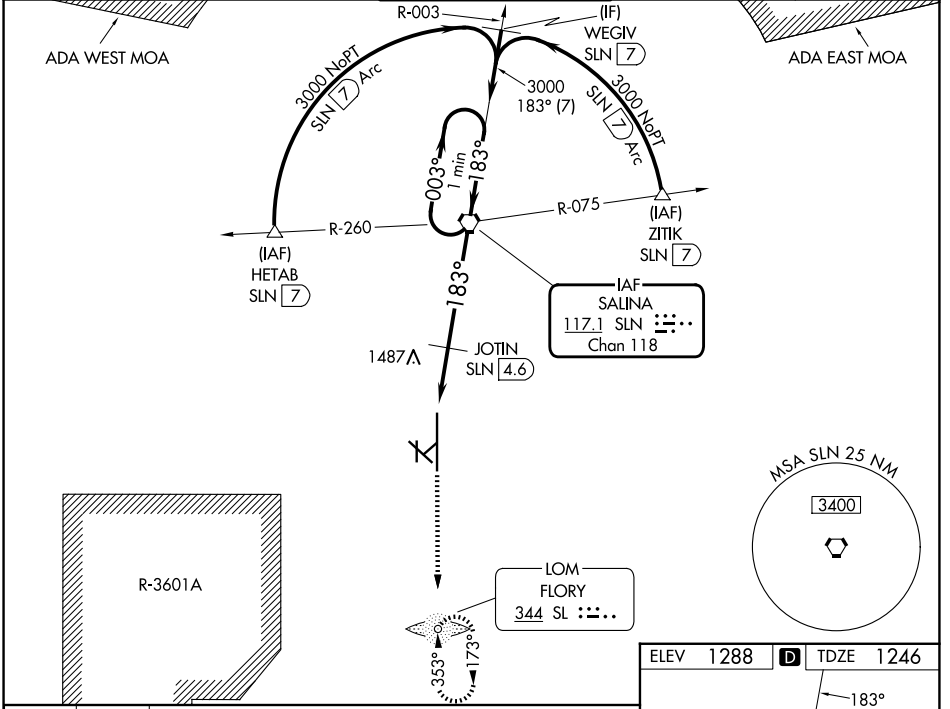
VORTAC SLN 117.1 Chan 118	APP CRS 183°	Rwy Ldg TDZE 1246 Apt Elev 1288
---	------------------------	---

VOR RWY 17

SALINA RGNL (SLN)

<p>▽ Inoperative table does not apply to Cat C/D/E. ▲ Circling NA for Cat D/E southwest of Rwy 12-30. ADF required.</p>	<p>MALS</p>	<p>MISSED APPROACH: Climb to 3400 direct SL LOM and hold.</p>
---	-------------	---

ATIS 120.15	KANSAS CITY CENTER 134.9 363.2	SALINA TOWER * 119.3 (CTAF) 0 257.7	GND CON 121.9 360.8	UNICOM 122.95
-----------------------	--	---	-------------------------------	-------------------------



CATEGORY	A	B	C	D	E
S-17	1860-3/4 614 (600-3/4)		1860-1 3/4 614 (600-1 3/4)	1860-2 614 (600-2)	1860-2 1/4 614 (600-2 1/4)
CIRCLING	1860-1 572 (600-1)		1860-1 3/4 572 (600-1 3/4)	1860-2 572 (600-2)	1920-2 1/4 632 (700-2 1/4)
JOTIN FIX MINIMUMS					
S-17	1760-3/4 514 (500-3/4)		1760-1 1/2 514 (500-1 1/2)	1760-1 3/4 514 (500-1 3/4)	
CIRCLING	1820-1 532 (600-1)	1840-1 552 (600-1)	1860-1 1/2 572 (600-1 1/2)	1860-2 572 (600-2)	1920-2 1/4 632 (700-2 1/4)

ELEV 1288	D	TDZE 1246
-----------	----------	-----------

Diagram of the runway and taxiway layout. It shows RWY 17-35, RWY 12-30, and various taxiways (A, B, C, D, E, F, G, H, I, J, K, L, M, N, O, P, Q, R, S, T, U, V, W, X, Y, Z). The diagram also shows the HIRL and MIRL lights for RWY 17-35 and RWY 12-30. The FAF to MAP is 7 NM.

Knots	60	90	120	150	180
Min:Sec	7:00	4:40	3:30	2:48	2:20

NC-2, 19 MAR 2026 to 16 APR 2026

NC-2, 19 MAR 2026 to 16 APR 2026