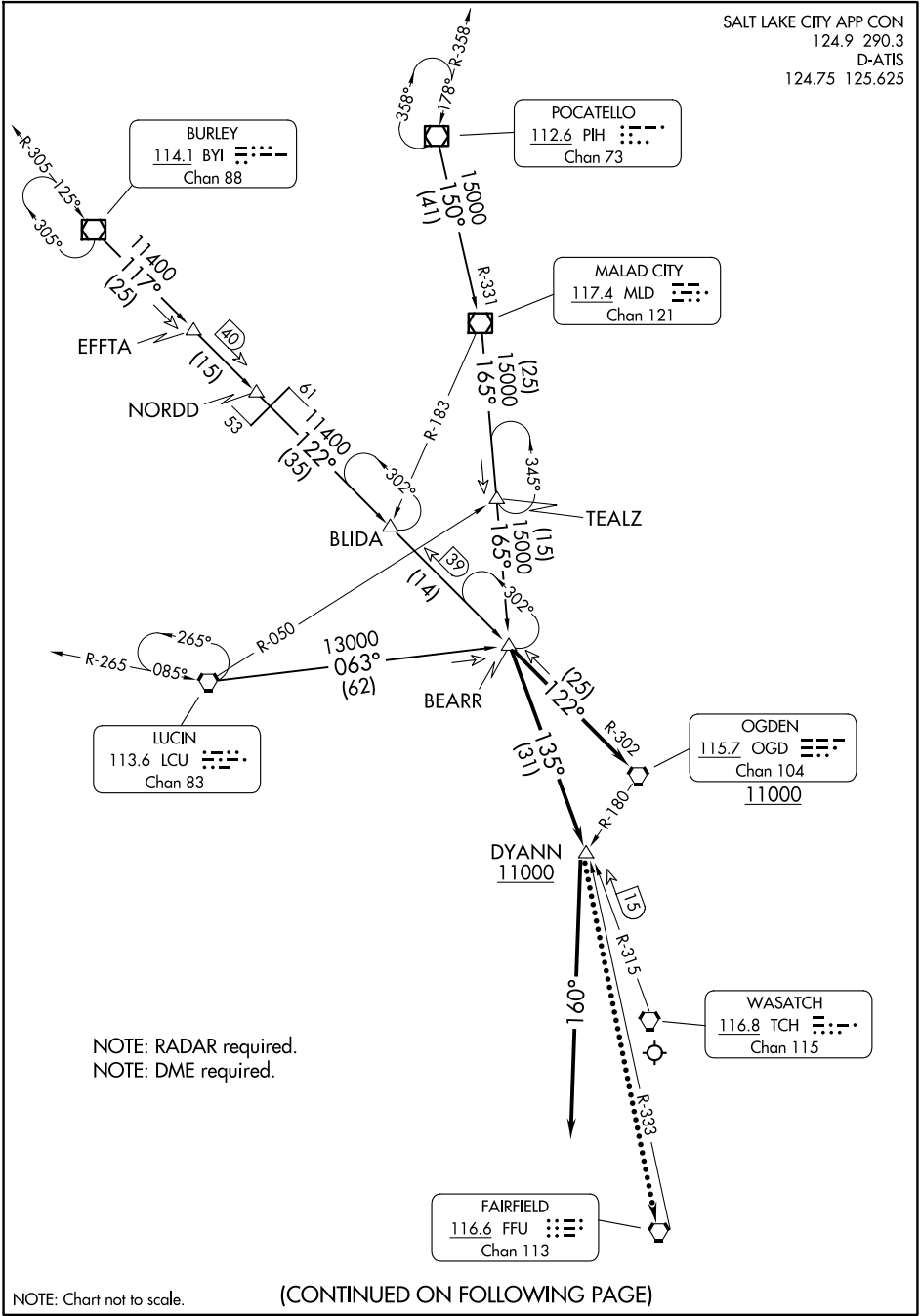


BEARR FIVE ARRIVAL

SALT LAKE CITY APP CON
124.9 290.3
D-ATIS
124.75 125.625

AL-365 (FAA)



NOTE: RADAR required.
NOTE: DME required.

NOTE: Chart not to scale.

(CONTINUED ON FOLLOWING PAGE)

SW-4, 19 MAR 2026 to 16 APR 2026

SW-4, 19 MAR 2026 to 16 APR 2026

ARRIVAL ROUTE DESCRIPTION

BURLEY TRANSITION (BYI.BEARR5): From over BYI VOR/DME on BYI R-117 and OGD R-302 to BEARR. Thence

LUCIN TRANSITION (LCU.BEARR5): From over LCU VORTAC on LCU R-063 to BEARR. Thence

POCATELLO TRANSITION (PIH.BEARR5): From over PIH VOR/DME on PIH R-150 and MLD R-331 to MLD VOR/DME, then on MLD R-165 to BEARR. Thence

LANDING NORTH:

. . . .on TCH VORTAC R-315 to cross DYANN at or above 11000. After DYANN fly heading 160° for vectors to ILS or LOC RWY 34L or VISUAL RWY 34L approach.

LANDING SOUTH:

. . . .on OGD VORTAC R-302 to cross OGD at or above 11000. Expect ILS or LOC RWY 16L approach.

LOST COMMUNICATIONS

LANDING NORTH: In the event of lost communications, at DYANN proceed direct FFU VORTAC. Maintain 13000 until FFU VORTAC.

SW-4, 19 MAR 2026 to 16 APR 2026

SW-4, 19 MAR 2026 to 16 APR 2026