

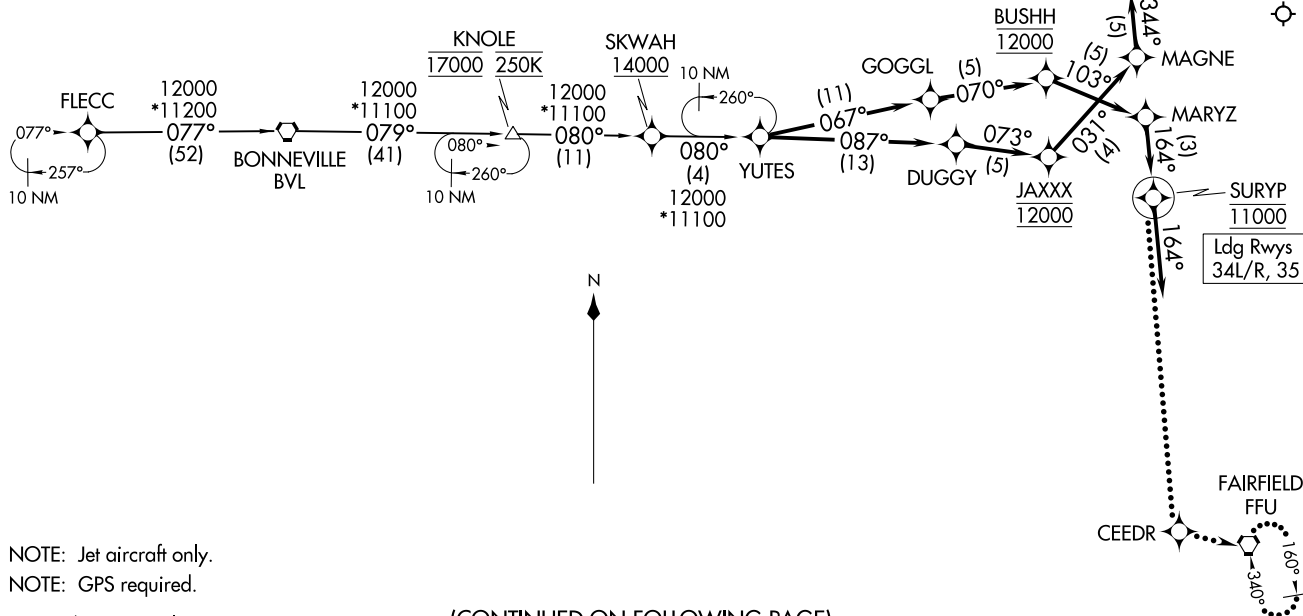
RNAV 1 - GPS.

RADAR required.

SALT LAKE CITY APP CON
128.1 307.05
D-ATIS
124.75 125.625

YUTES TWO ARRIVAL (RNAV)
(YUTES, YUTES2) 19 MAR 26

SALT LAKE CITY, UTAH
SALT LAKE CITY INTL (SLC)



N

NOTE: Jet aircraft only.
NOTE: GPS required.
NOTE: Chart not to scale.

(CONTINUED ON FOLLOWING PAGE)

YUTES TWO ARRIVAL (RNAV)
(YUTES, YUTES2) 26078

AL-365 (FAA)

SALT LAKE CITY INTL (SLC)
SALT LAKE CITY, UTAH

ARRIVAL ROUTE DESCRIPTION

FLECC TRANSITION (FLECC.YUTES2)

LANDING RUNWAYS 16L/R: From YUTES on track 087° to DUGGY, then on track 073° to cross JAXXX at 12000, then on track 031° to MAGNE, then on track 344° to cross LAWVA at 11000, then on track 344°. Expect RADAR vectors for the RNAV (RNP) Z Rwy 16R approach or RADAR vectors to 16L/R final approach course.

LANDING RUNWAY 17: From YUTES on track 087° to DUGGY, then on track 073° to cross JAXXX at 12000, then on track 031° to MAGNE, then on track 344° to cross LAWVA at 11000, then on track 344°. Expect RADAR vectors to final approach course.

LANDING RUNWAYS 34L/R: From YUTES on track 067° to GOGGL, then on track 070° to cross BUSHH at 12000, then on track 103° to MARYZ, then on track 164° to cross SURYP at 11000, then on track 164°. Expect RADAR vectors for the RNAV (RNP) Z RWY 34L approach or RADAR vectors to final approach course.

LANDING RUNWAY 35: From YUTES on track 067° to GOGGL, then on track 070° to cross BUSHH at 12000, then on track 103° to MARYZ, then on track 164° to cross SURYP at 11000, then on track 164°. Expect RADAR vectors to final approach course.

LOST COMMUNICATIONS

LANDING NORTH: After SURYP proceed to CEEDR, then left turn to FFU and hold at 11000.

LANDING SOUTH: After LAWVA proceed to RROY, then left turn to MOINT and hold at 12000.

SW-4, 19 MAR 2026 to 16 APR 2026

SW-4, 19 MAR 2026 to 16 APR 2026