

DNKIN TWO ARRIVAL (RNAV)
(AIRBL.DNKIN2) 27NOV25

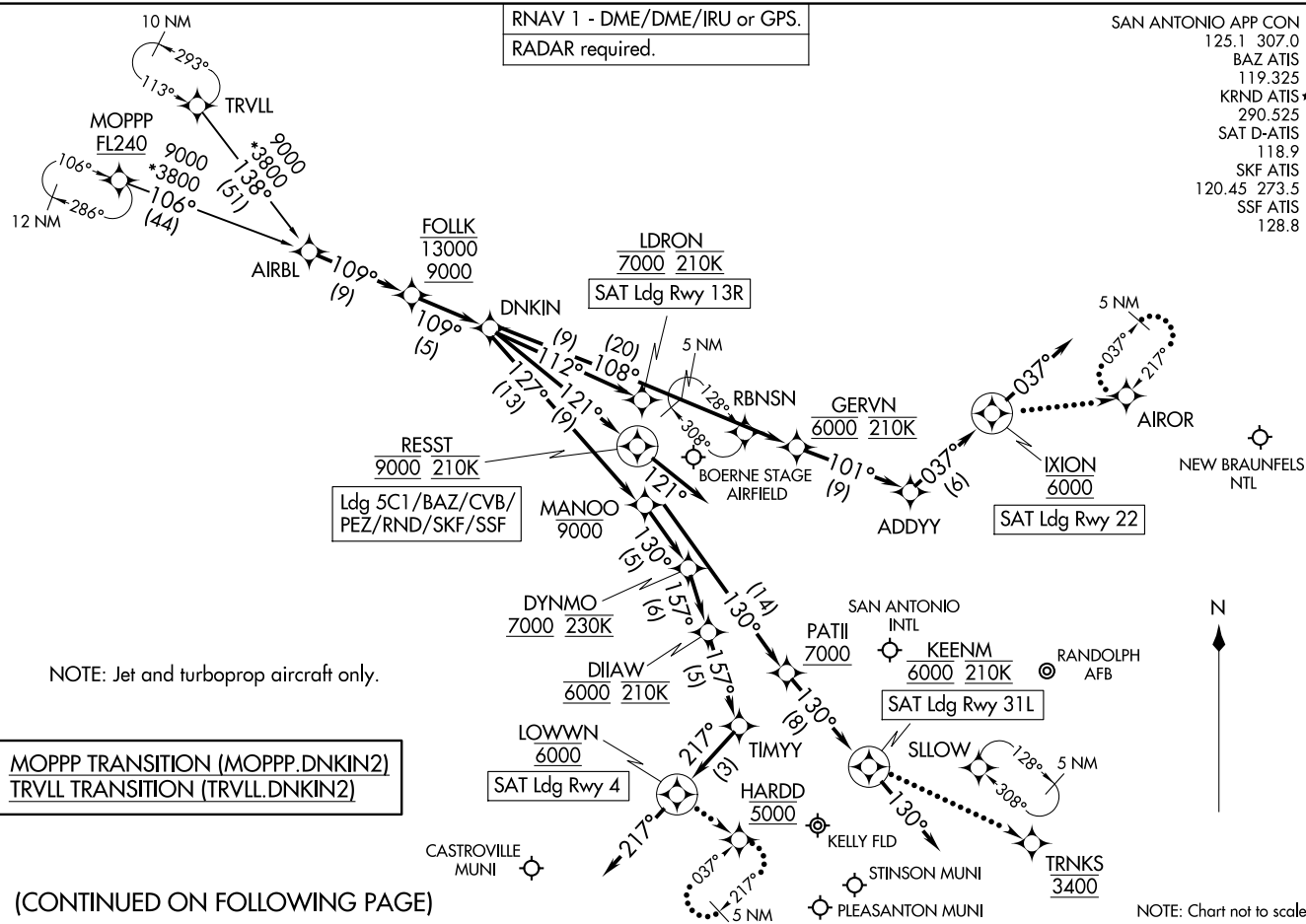
(AIRBL.DNKIN2) 25331
DNKIN TWO ARRIVAL (RNAV)

AL-369 (FAA)

SAN ANTONIO, TEXAS

SAN ANTONIO APP CON
125.1 307.0
BAZ ATIS
119.325
KRND ATIS ★
290.525
SAT D-ATIS
118.9
SKF ATIS
120.45 273.5
SSF ATIS
128.8

RNAV 1 - DME/DME/IRU or GPS.
RADAR required.



SAN ANTONIO, TEXAS

NOTE: Chart not to scale.

ARRIVAL ROUTE DESCRIPTION

SAN ANTONIO INTL (SAT): From AIRBL on track 109° to cross FOLLK between 9000 and 13000, then on track 109° to DNKIN.

LANDING SAT RUNWAY 4: From DNKIN on track 127° to cross MANOO at or below 9000, then on track 130° to cross DYNMO at or above 7000 and at 230K, then on track 157° to cross DIIAW at 6000 and at 210K, then on track 157° to TIMYY, then on track 217° to cross LOWWN at 6000, then on track 217°. Expect RADAR vectors to final approach course.

LANDING SAT RUNWAY 13R: From DNKIN on track 112° to cross LDRON at 7000 and at 210K. Expect ILS or LOC Rwy 13R approach.

LANDING SAT RUNWAY 22: From DNKIN on track 108° to cross GERVN at 6000 and at 210K, then on track 101° to ADDYY, then on track 037° to cross IXION at 6000, then on track 037°. Expect RADAR vectors to final approach course.

LANDING SAT RUNWAY 31L: From DNKIN on track 127° to cross MANOO at or below 9000, then on track 130° to cross PATII at or above 7000, then on track 130° to cross KEENM at 6000 and at 210K, then on track 130°. Expect RADAR vectors to final approach course.

LANDING SKF, BAZ, CVB, SSF, PEZ, 5C1, RND: From AIRBL on track 109° to cross FOLLK between 9000 and 13000, then on track 109° to DNKIN, then on track 121° to cross RESST at 9000 and at 210K, then on track 121°. Expect RADAR vectors to final approach course.

LOST COMMUNICATIONS

SAT RUNWAY 4: After LOWWN, proceed to HARDD at 5000 and hold.

SAT RUNWAY 22: After IXION, proceed to AIROR and hold.

SAT RUNWAY 31L: After KEENM proceed to TRNKS at 3400, then on ILS or LOC Rwy 31L or RNAV (GPS) Y RWY 31L approach.

SC-3, 19 MAR 2026 to 16 APR 2026

SC-3, 19 MAR 2026 to 16 APR 2026