

MARCS TWO ARRIVAL

SAN ANTONIO, TEXAS

SAN ANTONIO APP CON
 127.1 269.1
 KRND ATIS*
 290.525
 KSKF ATIS
 120.45 273.5
 SAT D-ATIS
 118.9
 SSF ATIS
 128.8

WACO
 115.3 ACT
 Chan 100

RADAR required

MAVERICK
 113.1 TTT
 Chan 78

GOOCH SPRINGS
 112.5 AGJ
 Chan 72

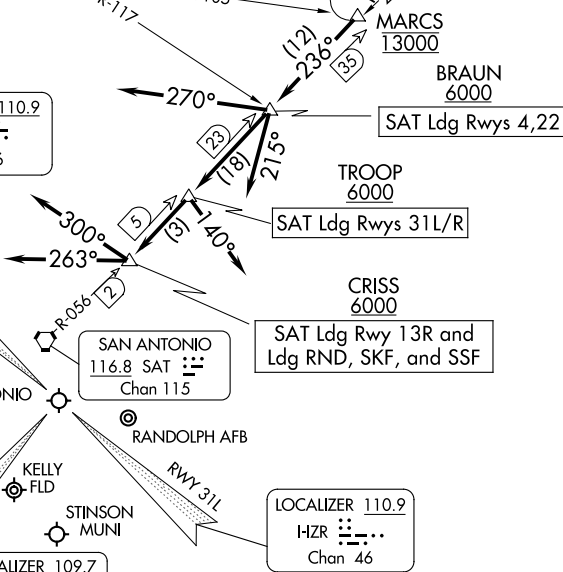
NOTE: CLL Transition, ATC assigned only.
 NOTE: CWK Transition for WACO or GRAY
 terminal area departures only.

COLLEGE STATION
 113.3 CLL
 Chan 80

STONEWALL
 113.8 STV
 Chan 85

CENTEX
 112.8 CWK
 Chan 75

LOCALIZER 110.9
 I-ANT
 Chan 46



(CONTINUED ON FOLLOWING PAGE)

NOTE: Chart not to scale

MARCS TWO ARRIVAL

SAN ANTONIO, TEXAS

SC-3, 19 MAR 2026 to 16 APR 2026

SC-3, 19 MAR 2026 to 16 APR 2026

ARRIVAL ROUTE DESCRIPTION

BLEWE TRANSITION (BLEWE.MARCS2): From over BLEWE on CWK R-012 to CWK VORTAC, then on CWK R-205 to MARCS. Thence. . .

CENTEX TRANSITION (CWK.MARCS2): From over CWK VORTAC on CWK R-205 to MARCS. Thence. . . .

COLLEGE STATION TRANSITION (CLL.MARCS2): From over CLL VORTAC on CLL R-249 and CWK R-070 to CWK VORTAC, then on CWK R-205 to MARCS. Thence. . . .

WACO TRANSITION (ACT.MARCS2): From over ACT VORTAC on ACT R-165 to BLEWE, then on CWK R-012 to CWK VORTAC, then on CWK R-205 to MARCS. Thence. . . .

WINDU TRANSITION (WINDU.MARCS2): From over WINDU on CWK R-012 to CWK VORTAC, then on CWK R-205 to MARCS. Thence. . . .

LANDING SAT RUNWAY 4:

. . . .From MARCS on SAT R-056 to cross BRAUN at or above 6000, then on heading 215°. Expect RADAR vectors to final approach course.

LANDING SAT RUNWAY 13R:

. . . .From MARCS on SAT R-056 to cross CRISS at or above 6000, then on heading 300°. Expect RADAR vectors to final approach course.

LANDING SAT RUNWAY 22:

. . . .From MARCS on SAT R-056 to cross BRAUN at or above 6000, then on heading 270°. Expect RADAR vectors to final approach course.

LANDING SAT RUNWAYS 31L/R:

. . . .From MARCS on SAT R-056 to cross TROOP at or above 6000, then on heading 140°. Expect RADAR vectors to final approach course.

LANDING RND/SKF/SSF:

. . . .From MARCS on SAT R-056 to cross CRISS at or above 6000, then on heading 263°. Expect RADAR vectors to final approach course.

SC-3, 19 MAR 2026 to 16 APR 2026

SC-3, 19 MAR 2026 to 16 APR 2026