

# POPPO TWO ARRIVAL (RNAV) Transition Routes

SAN ANTONIO, TEXAS

RNAV 1 - DME/DME/IRU or GPS.

RADAR required.

- SAN ANTONIO APP CON 125.1 307.0
- BAZ ATIS 119.325
- KRND ATIS ★ 290.525
- SAT D-ATIS 118.9
- SKF ATIS 120.45 273.5
- SSF ATIS 128.8

PRTZY

NOTE: Jet and turboprop aircraft only.

9000  
\*3800  
154°  
(176)

MUGSY

9000  
\*3700  
154°  
(127)

DILLO TRANSITION (DILLO.POPPO2)  
PPNUT TRANSITION (PPNUT.POPPO2)  
PRTZY TRANSITION (PRTZY.POPPO2)  
TRVLL TRANSITION (TRVLL.POPPO2)

11 NM  
33.4°

PPNUT  
FL220

DILLO  
FL220

9000  
\*3700  
154°  
(151)

9000  
\*3700  
172°  
(41)

10 NM  
293°  
113°

TRVLL

9000  
\*3700  
113°  
(63)

POPPO  
10000

NOTE: Chart not to scale. (CONTINUED ON FOLLOWING PAGE)

See following page for arrival routes.

SC-3, 19 MAR 2026 to 16 APR 2026

SC-3, 19 MAR 2026 to 16 APR 2026

# POPPO TWO ARRIVAL (RNAV) Transition Routes

SAN ANTONIO, TEXAS

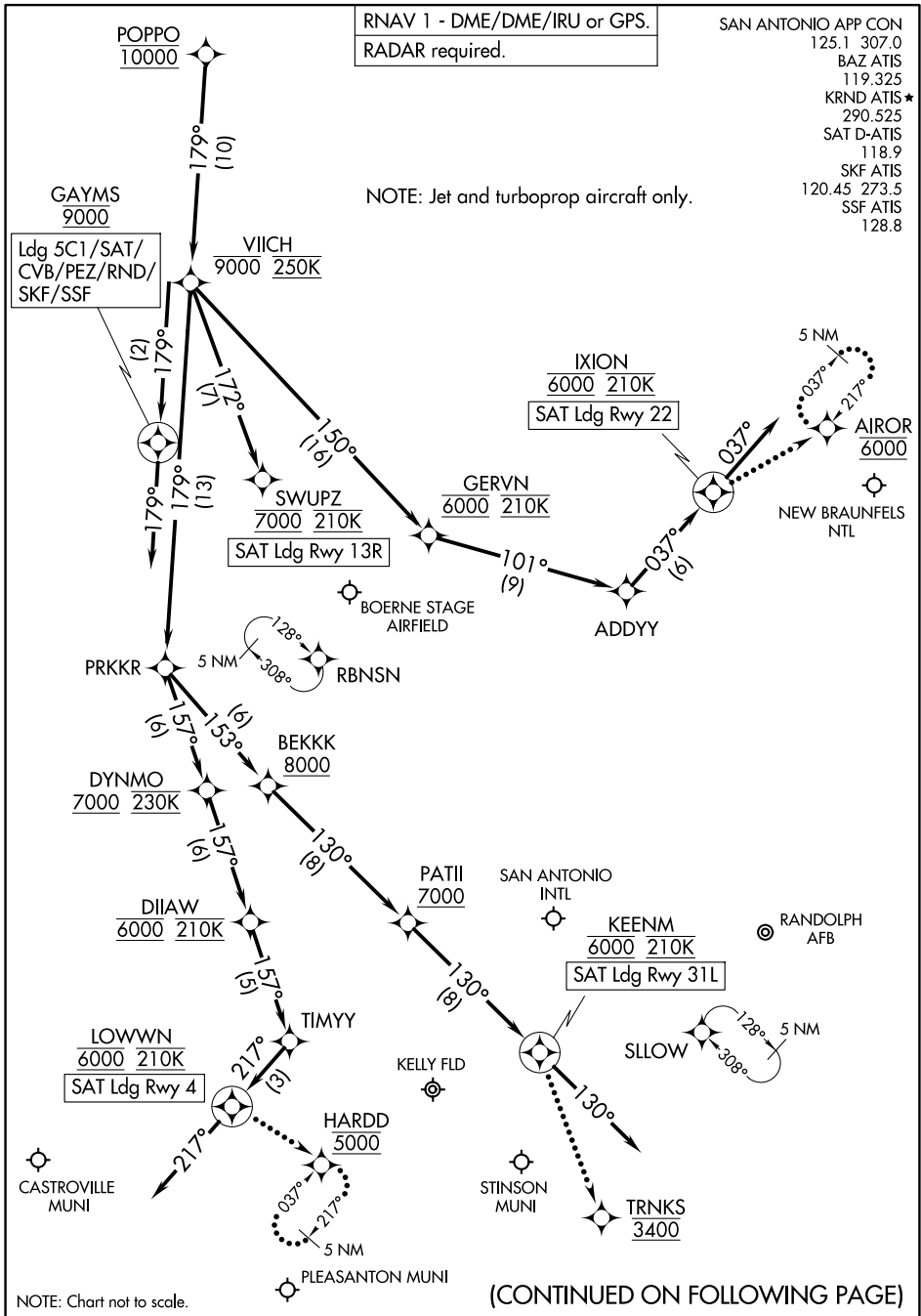
POPPO TWO ARRIVAL (RNAV) Arrival Routes

SAN ANTONIO, TEXAS

RNAV 1 - DME/DME/IRU or GPS.  
RADAR required.

- SAN ANTONIO APP CON 125.1 307.0
- BAZ ATIS 119.325
- KRND ATIS★ 290.525
- SAT D-ATIS 118.9
- SKF ATIS 120.45 273.5
- SSF ATIS 128.8

NOTE: Jet and turboprop aircraft only.



NOTE: Chart not to scale.

(CONTINUED ON FOLLOWING PAGE)

POPPO TWO ARRIVAL (RNAV) Arrival Routes

SAN ANTONIO, TEXAS

ARRIVAL ROUTE DESCRIPTION

SAN ANTONIO INTL (SAT): From POPPO on track 179° to cross VIICH at or below 9000 and at 250K.

LANDING SAT RUNWAY 4: From VIICH on track 179° to PRKKR, then on track 157° to cross DYNMO at or above 7000 and at 230K, then on track 157° to cross DIIAW at 6000 and at 210K, then on track 157° to TIMYY, then on track 217° to cross LOWWN at 6000 and at 210K, then on track 217°. Expect RADAR vectors to final approach course.

LANDING SAT RUNWAY 13R: From VIICH on track 172° to cross SWUPZ at 7000 and at 210K. Expect ILS or LOC RWY 13R approach.

LANDING SAT RUNWAY 22: From VIICH on track 150° to cross GERVN at 6000 and at 210K, then on track 101° to ADDYY, then on track 037° to cross IXION at 6000 and at 210K, then on track 037°. Expect RADAR vectors to final approach course.

LANDING SAT RUNWAY 31L: From VIICH on track 179° to PRKKR, then on track 153° to cross BEKKK at or above 8000, then on track 130° to cross PATII at or above 7000, then on track 130° to cross KEENM at 6000 and at 210K, then on track 130°. Expect RADAR vectors to final approach course.

LANDING SKF/BAZ/CVB/SSF/PEZ/5C1/RND: From POPPO on track 179° to cross VIICH at or below 9000 and at 250K, then on track 179° to cross GAYMS at 9000, then on track 179°. Expect RADAR vectors to final approach course.

LOST COMMUNICATIONS

SAT RUNWAY 4: After LOWWN proceed to HARDD at 5000 and hold.

SAT RUNWAY 22: After IXION proceed to AIROR at 6000 and hold.

SAT RUNWAY 31L: After KEENM proceed to TRNKS at 3400, then on ILS or LOC RWY 31L or RNAV (GPS) Y RWY 31L approach.

SC-3, 19 MAR 2026 to 16 APR 2026

SC-3, 19 MAR 2026 to 16 APR 2026