

QERVO THREE ARRIVAL (RNAV)
(MARCS, QERVO3) 27NOV25

QERVO THREE ARRIVAL (RNAV) Transition Routes

SAN ANTONIO, TEXAS

SAN ANTONIO APP CON
127.1 269.1
BAZ ATIS
119.325
KRND ATIS ★
290.525
SAT D-ATIS
118.9
SKF ATIS
120.45 273.5
SSF ATIS
128.8

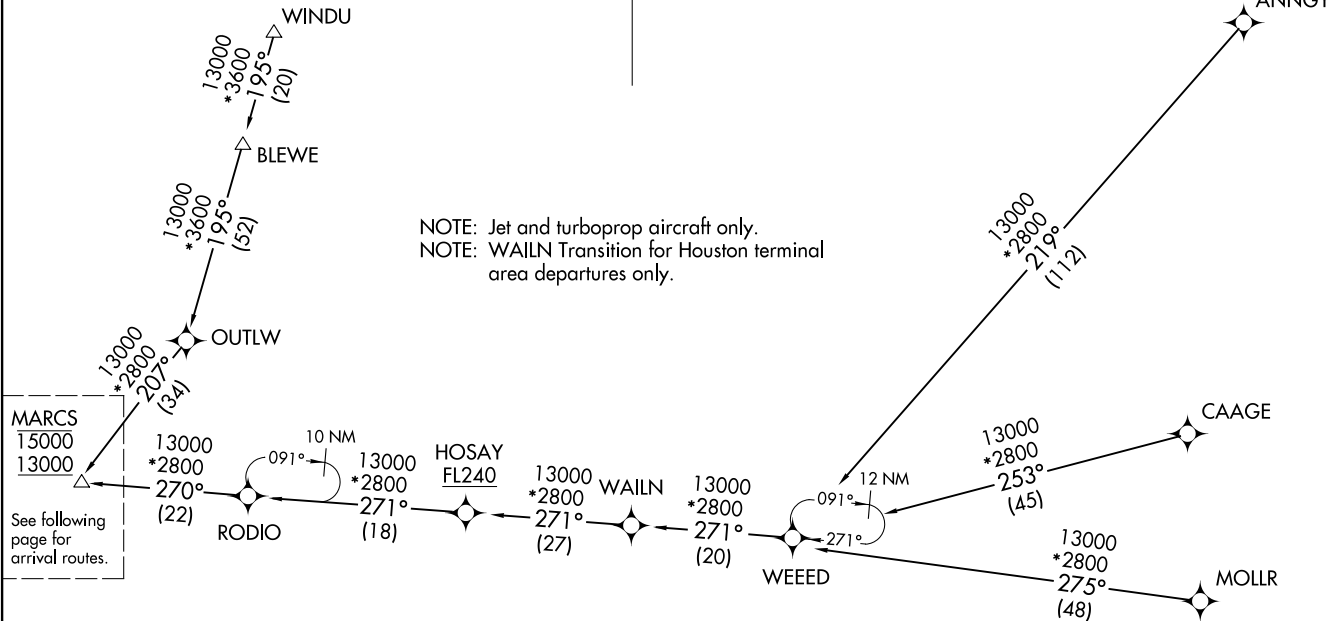
RNAV 1-DME/DME/IRU or GPS.
RADAR required.

ANNGY TRANSITION (ANNGY.QERVO3)
BLEWE TRANSITION (BLEWE.QERVO3)
CAAGE TRANSITION (CAAGE.QERVO3)
MOLLR TRANSITION (MOLLR.QERVO3)
WAILN TRANSITION (WAILN.QERVO3)
WINDU TRANSITION (WINDU.QERVO3)

(MARCS, QERVO3) 25331
QERVO THREE ARRIVAL (RNAV)
(MARCS, QERVO3) 27NOV25

AL-369 (FAA)
Transition Routes

SAN ANTONIO, TEXAS



(CONTINUED ON FOLLOWING PAGE)

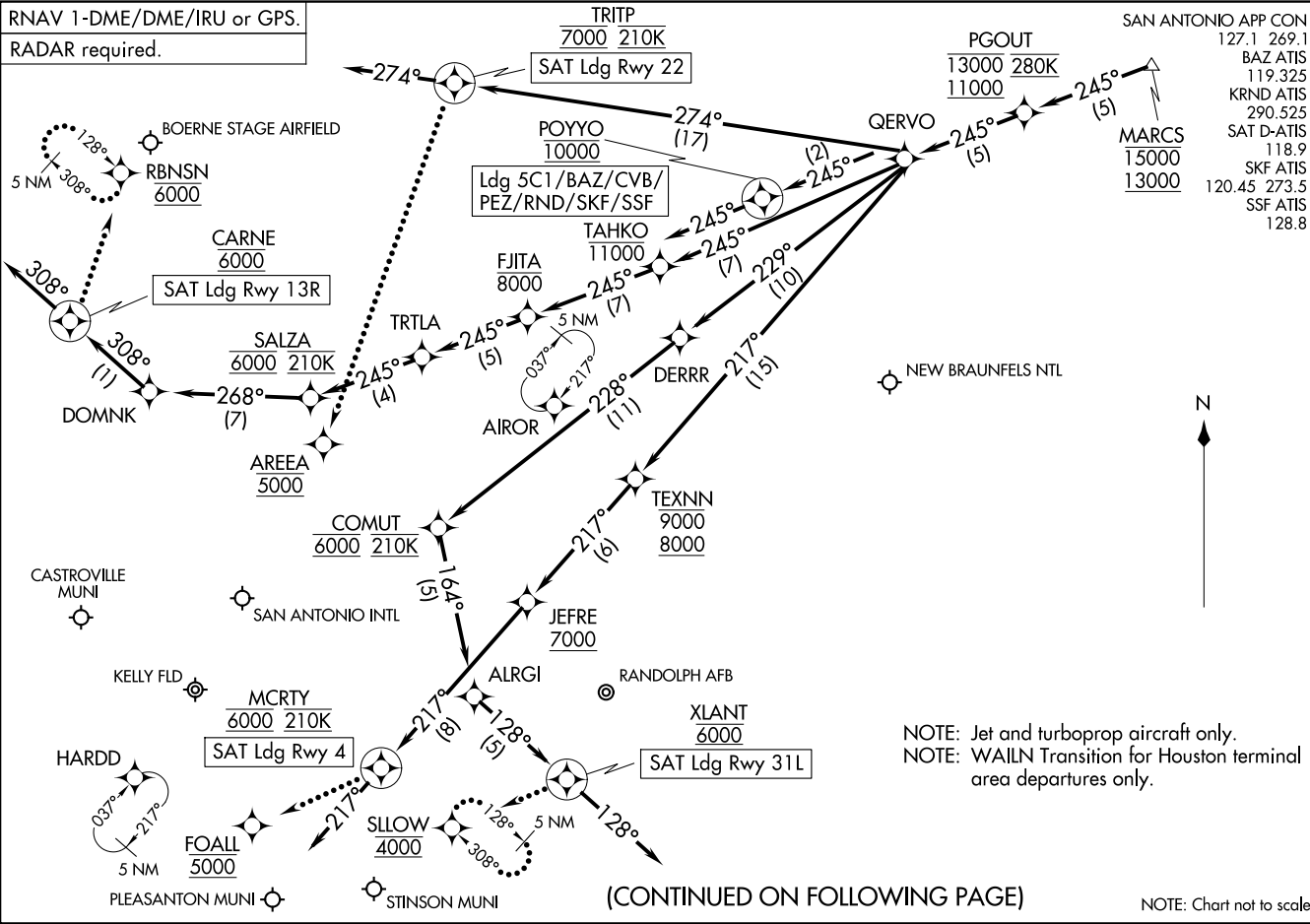
NOTE: Chart not to scale.

QERVO THREE ARRIVAL (RNAV) Arrival Routes
(MARC3, QERV03) 27NOV25

(MARC3, QERV03) 25331
ALC-369 (FAA)
QERVO THREE ARRIVAL (RNAV) Arrival Routes

SAN ANTONIO, TEXAS

RNAV 1-DME/DME/IRU or GPS.
RADAR required.



QERVO THREE ARRIVAL (RNAV)

SAN ANTONIO, TEXAS

ARRIVAL ROUTE DESCRIPTION

SAN ANTONIO INTL (SAT): From MARCS on track 245° to cross PGOUT between 11000 and 13000 and at 280K, then on track 245° to QERVO.

LANDING SAT RUNWAY 4: From QERVO on track 217° to cross TEXNN between 8000 and 9000, then on track 217° to cross JEFRE at or above 7000, then on track 217° to cross MCRTY at 6000 and at 210K, then on track 217°. Expect RADAR vectors to final approach course.

LANDING SAT RUNWAY 13R: From QERVO on track 245° to cross TAHKO at or below 11000, then on track 245° to cross FJITA at or below 8000, then on track 245° to TRTLA, then on track 246° to cross SALZA at 6000 and at 210K, then on track 268° to DOMNK, then on track 308° to cross CARNE at 6000, then on track 308°. Expect RADAR vectors to final approach course.

LANDING SAT RUNWAY 22: From QERVO on track 274° to cross TRITP at 7000 and at 210K, then on track 274°. Expect RADAR vectors to final approach course.

LANDING SAT RUNWAY 31L: From QERVO on track 229° to DERRR, then on track 228° to cross COMUT at 6000 and at 210K, then on track 164° to ALRGI, then on track 128° to cross XLANT at 6000, then on track 128°. Expect RADAR vectors to final approach course.

LANDING SKF/BAZ/CVB/SSF/PEZ/5C1/RND: From MARCS on track 245° to cross PGOUT between 11000 and 13000 and at 280K, then on track 245° to QERVO, then on track 245° to cross POYYO at 10000, then on track 245°. Expect RADAR vectors to final approach course.

LOST COMMUNICATIONS

SAT RUNWAY 4: After MCRTY, proceed to FOALL at 5000, then on ILS or LOC RWY 4 or RNAV (GPS) Y RWY 4 approach.

SAT RUNWAY 13R: After CARNE, proceed to RBNSN at 6000 and hold.

SAT RUNWAY 22: After TRITP proceed to AREEA at 5000, then on RNAV (GPS) Y RWY 22 approach.

SAT RUNWAY 31L: After XLANT, proceed to SLOW at 4000 and hold.

SC-3, 19 MAR 2026 to 16 APR 2026

SC-3, 19 MAR 2026 to 16 APR 2026